

Future access to primary medical care (GP Services) for Mossley and Dudley Fields Communities

Public Consultation document

A chance to have your say

**Do you want this in another format or language,
or do you want someone to go through it with you?
Ring us on 01922 618358. We will do our best to get
it into a format or language that suits you and that
you can understand as quickly as possible.
Of course, this is free of charge.**

Why is NHS Walsall consulting you?

NHS Walsall has been informed of Dr (Mr) Ghaffar and Dr (Mrs) Ghaffar's plans to retire after a long career spanning 31 years. During this time they have worked at premises owned by them known as the Abbey Square Surgery on Mossley estate. Together with a third GP, Dr Saleem, they provide general medical services to 3,145 patients.

We have published this consultation document to tell you about the options for providing future GP services in Mossley and so that you can give us your views on them.

The consultation is running until 23 April 2010. Any views you pass back to us during this time will be recorded by us and used with other relevant facts to help us make a decision about future GP services in Mossley. At the end of the consultation we'll let you know about the decision and how and why we made it.

Sometimes, decisions are difficult to make because, as well as what you tell us, there are certain factors that we have to consider, for example cost and affordability. In this case, we'll be looking at solutions that are affordable, acceptable to patients, staff and the public and clinically safe and effective. We'll weigh up each of these in making our final decision.

If you are writing your comments on this document and posting it back to us, you can put your contact details here.

You can also leave it anonymous if you prefer

Name

Address

Postcode

Email

- I am responding for myself
- I am responding on behalf of a group or organisation

Name of group:

How you can have your say

The easiest way to let us know what you think is to simply write it on the document and send the whole thing back to us. Just fold the back cover over so that the FREEPOST address is showing, fold it into three, and sellotape down the ends. You can then pop it into the post, and no stamp is necessary.

You can email
Consultations@walsall.nhs.uk
with your views.

You can ring one of our Customer Services representatives on 01922 618358 and we will write down what you tell us over the phone.

You can also send us a letter free of charge, by writing FREEPOST RRLU-CSTS-ERUZ above the address:

Primary Care Consultation
NHS Walsall
Jubilee House
Bloxwich Lane
Walsall WS2 7JL

To find out more about the consultation, have a look at the information over the page.

1. Who have we consulted with so far?

This is the start of the process for NHS Walsall. We haven't yet consulted with local people about the options set out in this document.

2. Why we're consulting and what it means for local services

NHS Walsall has been informed of Dr (Mr) Ghaffar and Dr (Mrs) Ghaffar's plans to retire after a long career spanning 31 years. During this time they have worked at Premises owned by them known as the Abbey Square Surgery on Mossley estate. Together with a third GP, Dr Saleem, they provide family doctor services to 3,145 patients.

Because these 2 long serving GPs want to retire at the end of March 2010 and also the fact that the PCT currently contracts for primary medical care (GP services) to be delivered at Abbey Square surgery, we have decided that there is a need to look urgently at how we will continue to provide access to GP services to patients who are registered with Abbey Square from 1 April 2010.

We have come up with a number of possibilities (options) to ensure that we continue to provide family doctor services to people who live in the Mossley and Dudley Fields area of Walsall. Before we make a final decision on what to do, we want to hear your views about the options shown below.

3. The Options

Option 1 – Abbey Square Surgery remains open with small scale redevelopment and refurbishment. GP services will be provided as now by a team of new doctors.

Option 2 – Abbey Square Surgery joins with All Saints Surgery at Pinfold Health Centre and Abbey Square patients will get their GP services at Pinfold.

Option 3 – All Saints Surgery relocates to Abbey Square Surgery, Mossley and All Saints patients get their GP services at Abbey Square.

Option 4 - Abbey Square Surgery joins with All Saints Surgery. Abbey Square patients get their GP services at Pinfold Health Centre but a satellite branch surgery is provided in the Mossley/Dudley Fields area, for a short period whilst all adapt to the change.

4. Some of the advantages and disadvantages of the options

OPTION	ADVANTAGES	DISADVANTAGES
<p>1. Abbey Square Surgery remains open with small scale redevelopment and refurbishment. GP services will be provided by a new team of doctors.</p>	<p>Would ensure GP services continue as they are to registered patients.</p> <p>GP Practice would remain within the heart of the community.</p> <p>Public transport would not be needed.</p>	<p>Existing Abbey Square premises would need refurbishment but retiring GPs want to sell.</p> <p>Abbey Square only offers GP services. Patients would still need to go to Pinfold for other community services.</p> <p>It may be difficult to recruit new GPs.</p> <p>There is very limited parking at Abbey Square and patients have to park in nearby streets.</p> <p>The building isn't suitable for people with disabilities and the cost to alter it would be very high.</p>
<p>2. Abbey Square Surgery joins with All Saints Surgery at Pinfold Health Centre and Abbey Square patients will get their GP services at Pinfold.</p>	<p>Existing GP services would be maintained.</p> <p>The needs of housebound and infirm patients would continue to be a high priority of the newly joined Practices.</p> <p>Home visits would continue to be provided. The relocation would bring together on one site the GP and all community services that Mossley and Dudley Fields residents currently access. No refurbishment costs.</p> <p>There are good public transport links</p> <p>A large free car park is available for patient parking. For some patients, Pinfold Health Centre is nearer.</p>	<p>Local businesses might be affected because of loss of passing trade.</p> <p>The local pharmacy might be affected because prescriptions and over the counter sales provide its main income.</p> <p>Patients who aren't mobile may find the Pinfold Surgery location too far away and difficult to get to.</p> <p>The car park at Pinfold is already very heavily used throughout the day.</p> <p>Some patients may have to travel further.</p> <p>Some patients will be reliant on public transport.</p>

OPTIONS	ADVANTAGES	DISADVANTAGES
<p>3. All Saints Surgery relocates to Abbey Square Surgery, Mossley and All Saints patients get their GP services at Abbey Square.</p>	<p>Would ensure GP services continue as they are to registered patients.</p> <p>GP Practice would remain within the heart of the community.</p> <p>Public transport wouldn't be needed.</p>	<p>Abbey Square doesn't have sufficient space to accommodate All Saints staff.</p> <p>Existing Abbey Square premises would need refurbishment but retiring GPs want to sell.</p> <p>Abbey Square only offers GP services. Patients would still need to go to Pinfold for other community services.</p> <p>It may be difficult to get the current GP and to find any new GPs to stay in the longer term.</p> <p>There is very limited parking at Abbey Square and patients have to park in nearby streets.</p> <p>The building isn't suitable for people with disabilities and the cost to alter it would be very high.</p>
<p>4. Abbey Square Surgery joins with All Saints Surgery. Abbey Square patients get their GP services at Pinfold Health Centre but a satellite branch surgery is provided on a short term basis in the Mossley/Dudley Fields area.</p>	<p>There is access to a primary care surgery in Mossley and Dudley Fields, though this is likely to be limited to two to three days per week.</p> <p>The needs of housebound and infirm patients will continue to be a high priority of the newly merged practice.</p> <p>All Saints Surgery will continue to provide home visits.</p> <p>The relocation will bring together on one site the GP and all community services that Mossley and Dudley Fields residents currently access.</p> <p>No refurbishment costs.</p> <p>Good public transport links.</p>	<p>Local businesses might be affected - loss of passing trade.</p> <p>The local pharmacy might be affected because prescriptions and over the counter sales provide its main income.</p> <p>Patients who aren't mobile may find the Pinfold Surgery location too far away and difficult to get to.</p> <p>Car park at Pinfold is already very heavily used throughout the day.</p> <p>Some patients may have to travel further.</p> <p>Some patients will be reliant on public transport.</p>

5. How to get more information

If you want an electronic or paper copy of any other supporting information just telephone 01922 618358 and speak to the Customer Care Team.

6. How decisions will be made and what will happen after the consultation

It is important that you as local people and other interested parties have the opportunity to have your say about 1.the options we're proposing and 2.what your preferred option is for offering future GP services in Mossley and Dudley Fields. Our proposals will ensure that you can access future services but, as mentioned above, as well as your input, difficult factors have to be considered before a final decision is made. In this case, we'll be looking at solutions that are affordable, acceptable to patients, staff and the public and are clinically safe and effective.

This document tells you information about the consultation and how to make your views known but there will also be formal public meetings at which you can have your say and we will notify you of these. What you tell us will be given to NHS Walsall's Board of Directors to help them make a final decision.

7. What are the timescales?

We expect the consultation exercise to be finished by the end of April 2010 and the PCT to make a final decision in May 2010. We'll let all of you who took part know our decision and the reasons for it.

8. Some useful questions and answers

Q Who owns Abbey Square Surgery premises?

A Drs Ghaffar & Ghaffar own the premises

Q Can the PCT (NHS Walsall) buy the premises from Drs Ghaffar & Ghaffar?

A The PCT doesn't plan to do this. It would be very difficult as the costs would be very high.

Q Could the PCT rent the accommodation from Drs Ghaffar & Ghaffar?

A Yes, this is possible.

- Q Can the PCT pay for refurbishment costs?**
A No, as this would normally be up to the landlord, in this case the GP are owners of the building. PCT support may be possible but we'd need to look at how much it would cost and whether it would result in the best benefits.
- Q Does Abbey Square offer all primary care (i.e. community based health services) services?**
A No, only GP services. Other community health services are available at Pinfold Medical Centre.
- Q Do Mossley & Dudley Fields residents have a choice of GP practice they can register with?**
A Yes, this choice will remain. If patients don't want to relocate to All Saints Surgery they can choose to join other GP practices that cover the Mossley/Dudley Fields area.
- Q Are all Abbey Square patients Mossley/Dudley Fields residents?**
A No, about 35% come from outside the area including Willenhall North, Bloxwich East and Blakenall.
- Q Of all the people who live in the ward, approximately how many residents get their primary medical care (community health services) outside the area they live?**
A About 75% of residents in the Mossley/Dudley Fields area access primary medical care outside the area they live in.

Other questions you may want to think about

- Q What could All Saints Surgery offer that I can't get from Abbey Square Surgery now?**
- Q Would I be able to get a home visit when I needed one?**

These are just some examples of questions you may want to ask. If you have any others, please let us know them so that we can give you an answer.

Finally, thank you for taking the time to tell us your views. Our Board will take these into account in the decision they make and we'll let you know once we know the result.

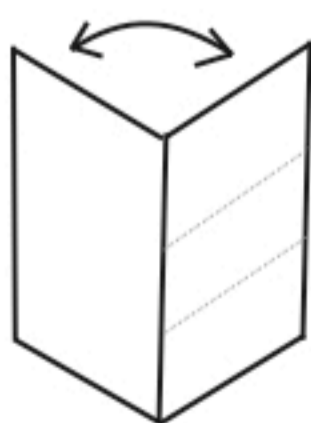
Business Reply
Licence Number
RRLU-CSTS-ERUZ



Primary Care Consultation
Jubilee House
Bloxwich Lane
WALSALL
WS2 7JL

How to fold:

Fold back the back cover so this page is showing.



Then fold into three so the address is showing.

Finally, sellotape or stick down the edges.

Mail it to us free of charge.

