

Saving Lives

OUR 
HEALTHIER
NATION

**TARGETS AND MONITORING DATA
WALSALL – FOUR YEARS ON**

DR SAM RAMAIAH
GRAHAM FEE
RACHEL NEAL
DEPARTMENT OF PUBLIC HEALTH MEDICINE
NOVEMBER 2003

**SAVING LIVES
OUR HEALTHIER NATION**

**TARGETS AND MONITORING DATA
WALSALL – FOUR YEARS ON**

CONTENTS

	Page No
1. Introduction	1
2. Summary of Progress Towards ‘Our Healthier Nation’ Headline Targets in Walsall After 4 Years	3
2.1 Coronary Heart Disease, Stroke and Related Conditions	
2.2 Cancer	
2.3 Mental Health – Suicide	
2.4 Accidents	
3. Saving Lives – Coronary Heart Disease, Stroke and Related Conditions	6
3.1 Coronary Heart Disease – Persons under 65	
3.2 Coronary Heart Disease – Persons 65-74	
3.3 Stroke – Persons under 65	
3.4 Stroke – Persons 65-74	
4. Saving Lives – Cancer	16
4.1 Lung Cancer – Persons under 75	
4.2 Breast Cancer – Females aged 50-69	
5. Saving Lives – Mental Health	22
6. Saving Lives – Accidents	24
6.1 Mortality Target for Accidents	
6.2 Serious Injury Target	
7. Appendix	29
Walsall Monitoring Data from 1993 Extrapolated to 2010	

SAVING LIVES - OUR HEALTHIER NATION

TARGETS AND MONITORING DATA WALSALL - FOUR YEARS ON

1. INTRODUCTION

The national strategy *Saving Lives-Our Healthier Nation* aims to improve the health of the population as a whole in England and in addition to improve the health of the worst off in society, and in so doing reduce health inequalities.

The strategy sets national targets in four areas: coronary heart disease and stroke, cancer, mental health and accidents. These 'headline' targets are long term (set for 2010), recognising that actions to achieve them will take time to implement and show effects. Intermediate 'milestones' are also set for 2005.

In February 2001, the Walsall Department of Public Health Medicine published a discussion document 'Saving Lives – Our Healthier Nation: Baselines and Local Targets'. This report considered the national targets, the national and Walsall baselines and local past performance trends. Having regard to the above, and also to the need to reduce health inequalities between Walsall and other districts in England, the report recommended a series of targets for Walsall. In most cases, the proposed Walsall targets were for larger percentage reductions than for the national targets because Walsall baseline mortality rates are higher than nationally. For some of the national 'headline' targets, local sub targets were also recommended which would contribute to achievement of the 'headline' targets. These local targets were considered challenging but achievable and were agreed by Walsall Health Authority, and subsequently adopted by Walsall Primary Care Trust.

The targets cover the following areas:

Headline target: Coronary heart disease, stroke and related conditions in people under 75 (ie all circulatory diseases)

Walsall sub-targets: CHD mortality rate in under 65s
CHD mortality rate in ages 65-74
Stroke mortality rate in under 65s
Stroke mortality rate in ages 65-74

Headline target: All cancers in people under 75

Walsall sub-targets: Lung cancer mortality rate in under 75s
Breast cancer mortality rate in women aged 50-69

Headline target: Mental health – suicide rate, all ages

Headline target: Deaths and serious injury from accidents, all ages

It is estimated that achievement of the targets in Walsall will reduce annual deaths by 376, compared with the baseline period of 1995-97.

This report examines the progress achieved so far towards the Walsall targets, using the most recent data available, which is up to the year 2001. Trends since 1993 are shown together with comparisons with West Midlands regional data and national data. Because of inevitable year to year fluctuations, monitoring data is presented for the triennium 1999-2001 as the main measure of progress against the baseline period 1995-97 (as recommended by the Department of Health). In this sense, the report is monitoring progress in Walsall 'Four Years On', with a further 10 years to run to the target year.

Technical Note:

Data used in this report is extracted from the Compendium of Clinical and Health Indicators 2002, published by ONS. In the 2002 Compendium, ONS has revised all mortality data from an ICD9 to an ICD10 basis. This has resulted in minor changes to the reported number of deaths and mortality rates in most OHN categories compared to those previously published. The revision has been incorporated into this report, including consequential minor changes to targets from those published in the previous Walsall annual monitoring reports. In addition, the revision has meant that only data from 1993 onwards has been used for trend analysis, since earlier data is no longer on a strictly comparable basis.

2. SUMMARY OF PROGRESS TOWARDS OUR HEALTHIER NATION HEADLINE TARGETS IN WALSALL AFTER 4 YEARS.

Four years on from the 1995-97 baseline period, Walsall has achieved an annual reduction of 122 deaths, which is almost one third of the way towards the target annual lives saved if all the component targets are achieved by 2010. The table below summarises this progress by headline target.

TARGET AREA	WALSALL TARGET 2010	PROGRESS UP TO YEAR 2001		IS WALSALL ON TREND TO ACHIEVE TARGET?
		% REDUCTION	ANNUAL LIVES SAVED	
All circulatory disease	49.9% cut in death rate	-16.5%	84	4
Cancer	24.5% cut in death rate	-9.9%	35	4
Mental health –suicide rate	20% cut in death rate	+19%	2* (* increase in deaths)	6
Accidents	41.7% cut in deaths	-19.1%	5	6
	10% cut in serious injury	+11.3%	not applicable	6
TOTAL LIVES SAVED			122	

KEY: 3 On track to meet target
6 Not on track to meet target

Note that these ratings are based on consideration of trend from 1993 to 2001.

A summary of progress in each of the target areas is outlined below.

2.1 Coronary Heart Disease, Stroke and Related Conditions (all circulatory diseases)

The Walsall mortality rate for **all circulatory diseases** in people under 75 continued to fall in 2001, maintaining the long term downward trend. A 16.5% reduction is registered for 1999-2001 against the baseline and the target should be achieved if the long term trend reduction continues. Despite this good progress, the reduction in Walsall has been lower than achieved regionally and nationally and therefore inequalities between Walsall and the average for other districts in England are greater than in 1995-97. The Walsall death rate from all circulatory disease in 1999-2001 is almost 23% higher than nationally, compared with 20% higher in 1995-97. (See pages 6-7 for charts and data).

The Walsall mortality rates for **coronary heart disease in the under 65s and in 65-74 year age group** have fallen by 17% and 22% respectively for 1999-2001 against baseline, and the longer term trends suggest that these sub-targets should be achieved. However, the Walsall reduction achieved in under the 65s is less than achieved regionally and nationally and inequalities have therefore increased for this age group and condition. The death rate from CHD in Walsall remains 30% higher than the national average for under 65s and 20% higher in the 65-74 age group. (See pages 8-1 for charts and data)

The Walsall mortality rates for **stroke in the under 65s and in the 65-74 age group** have fallen by 12% and 22% respectively for 1999-2001 against baseline. The longer term trend suggests the sub-target for the 65-74 age group should be achieved, although there has been a levelling off in the reduction in deaths in the last three years. The sub-target for the under 65s will not be achieved without a stronger downward trend. In the under 65s death rates among women in Walsall have fallen much more slowly than regionally and nationally (thereby increasing inequalities), whilst a larger reduction than regionally and nationally has been achieved in stroke deaths among women aged 65-74 in Walsall. Overall, stroke death rates in Walsall remain 38% higher than nationally in the under 65s and 8% higher in the 65-74 age group. (See pages 12-15 for charts and data)

2.2 Cancer

The Walsall mortality rate for **all cancers** in people under 75 continued to fall slowly in 2001. A 10% reduction was achieved for 1999-2001 against the baseline period, which was higher than the national reduction and inequalities have therefore marginally decreased. The trend since 1993 suggests that the Walsall target should be met if the downward trend is maintained. The Walsall death rate from all cancers in 1999-2001 is 4.5% higher than nationally, compared with 5.9% higher in 1995-97. (See pages 16-17 for charts and data)

The Walsall mortality rate for **lung cancer** in people under 75 levelled off in 2001 and for the period 1999-2001 was almost 14% below baseline. The trend performance suggests that the sub-target will be achieved. The Walsall

reduction in the lung cancer death rate is higher than regionally and nationally, leading to a reduction in inequalities over the period. The death rate among women in Walsall is below the national average, but among men in Walsall the rate is over 20% higher than nationally. Overall, the Walsall death rate from lung cancer in 1999-2001 is 12.5% higher than nationally, compared with almost 15% higher in 1995-97 (See pages 18-19 for charts and data)

The Walsall mortality rate for **breast cancer in women of screening age 50-69** increased marginally in 2001. Nevertheless, a 27% reduction was achieved for 1999-2001 against baseline, which was more than twice the national reduction, and the Walsall target for 2010 has already been achieved. Over the period there has been an inequalities turnround, with Walsall death rates in 1999- 2001 almost 14% *below* the national average, compared with a Walsall rate 4% *above* the national rate in 1995-97. (See pages 20-21 for charts and data)

2.3 Mental health – Suicide rates

Although based on small numbers, the Walsall suicide rate continued to increase in 2001. For 1999-2001 the rate has increased by over 18% against the baseline, with a decrease in female suicides more than offset by an increase in male suicides. Substantial year to year changes in the suicide rate are common, as the number of deaths is relatively small. However, the trend since 1993 suggests that the target for 2010 is unlikely to be achieved. In the baseline period (1995-7) the Walsall suicide rate was 30% below the national rate, whereas in 1999-2001 this had reduced to 18% below the national rate (and in the year 2001 was the same as the national rate). (See pages 22-23 for charts and data)

2.4 Accidents

Walsall **deaths from accidents** fell in 2001 for both the under 65s and over 65s, and for 1999-2001 mortality rate in Walsall was 19% below baseline and similar to the national rate. It is notable that both national and regional death rates from accidents were higher in 1999-2001 than in the baseline year. The Walsall reduction is attributable to a substantial reduction in accidental deaths in women, which are now marginally below the national rate. However, the trend in all accidental deaths since 1993 is of concern, as this appears to be rising rather than falling and there is therefore a substantial risk that the target will not be achieved. (See pages 24-25 for charts and data)

The Walsall rate of **serious injury from accidents** increased in 2001-02 and was 11% higher than in the baseline period of 1995/6, mainly as a result of increases among males. Regional and national rates have also increased over this period and the Walsall rate for serious injury is now only marginally remained below regional and national rates. Given the lack of progress so far in reducing hospital admissions for serious injury, there is risk that both national and local targets will not be achieved. (See pages 26-27 for charts and data)

3. SAVING LIVES – CORONARY HEART DISEASE, STROKE AND RELATED CONDITIONS (All circulatory diseases)

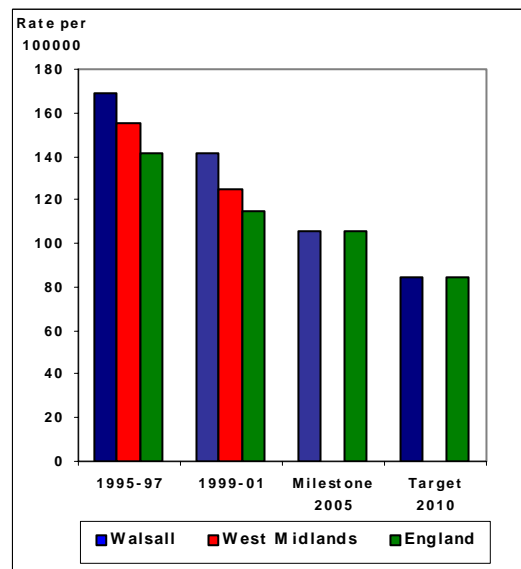
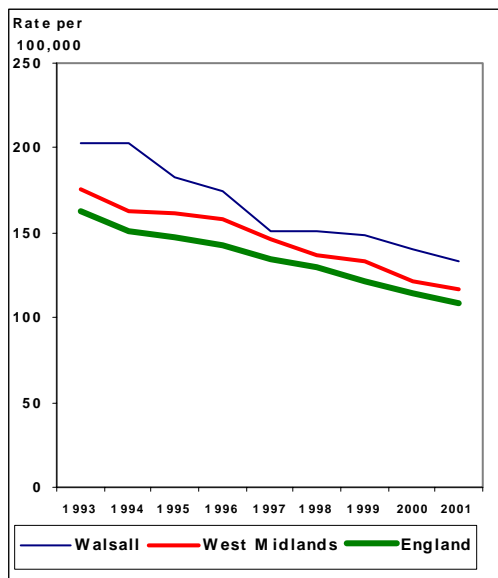
National Target

To reduce the death rate in people under 75 by at least 40% by 2010 (Milestone 25 % reduction by 2005).

WALSALL'S TARGET			
BY YEAR	% REDUCTION	RATE (PER 100000)	ANNUAL LIVES SAVED
2010	49.9	84.8	245
2005	37.3	106.0	183

OUR HEALTHIER NATION

Age Standardised Mortality Rates from All Circulatory Diseases Persons Aged Under 75



Source: Compendium of Clinical and Health Indicators 2002

Deaths from all circulatory diseases in persons under 75 (ICD10 100-199)

	1993	1994	1995	1996	1997	1998	1999	2000	2001
Number of Deaths in Walsall	593	598	525	507	443	436	432	406	384

Age Standardised Mortality Rate per 100,000 Population (Persons under 75)

	1995-97 (Baseline)	1999-01	Cumulative Progress: % Reduction Annual Lives Saved	
PERSONS:				
Walsall	169.2	141.2	-16.5	84
West Midlands	155.2	125.0	-19.5	
England	141.4	115.0	-18.7	
MALES:				
Walsall	237.1	197.2	-16.8	57
West Midlands	216.4	174.5	-19.4	
England	198.5	160.7	-19.0	
FEMALES:				
Walsall	105.9	89.1	-15.9	27
West Midlands	98.6	78.7	-20.2	
England	89.7	72.8	-18.8	

Sections 3.1 to 3.4 below indicate progress against local targets for coronary heart disease and stroke, for under 65s and ages 65 – 74. These are key components of the ‘all circulatory disease’ target.

3.1 CORONARY HEART DISEASE – PERSONS UNDER 65

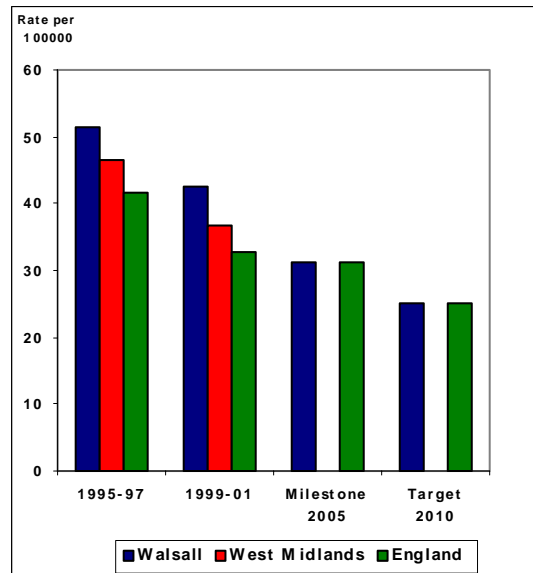
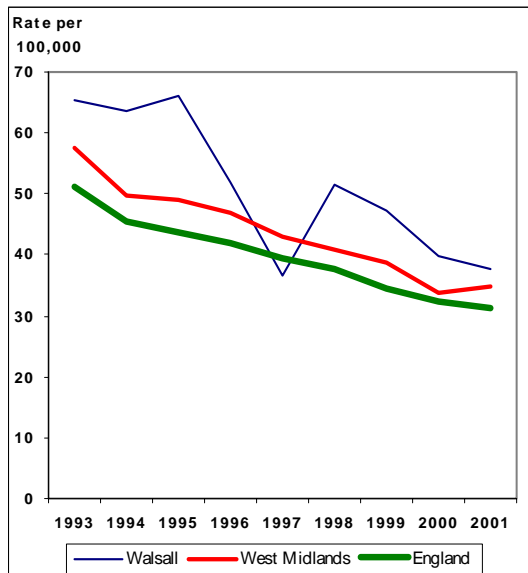
National Target

To reduce the death rate by at least 40% by 2010 (Milestone 25% reduction by 2005).

WALSALL'S TARGET			
BY YEAR	% REDUCTION	RATE (PER 100000)	ANNUAL LIVES SAVED
2010	51.4	25.0	60
2005	39.2	31.3	46

OUR HEALTHIER NATION

Age Standardised Mortality Rates – CHD Persons Aged Under 65



Source: Compendium of Clinical and Health Indicators 2002

Deaths from coronary heart disease in persons under 65 (ICD10 120-125, ICD9 410-414 adjusted))

	1993	1994	1995	1996	1997	1998	1999	2000	2001
Number of Deaths in Walsall	150	145	150	117	83	118	108	89	85

Age Standardised Mortality Rate per 100,000 Population (Persons under 65)

	1995-97 (Baseline)	1999-01	Cumulative Progress: % Reduction	Annual Lives Saved
PERSONS:				
Walsall	51.5	42.5	-17.4	22
West Midlands	46.4	36.6	-21.1	
England	41.7	32.7	-21.6	
MALES:				
Walsall	82.2	66.9	-18.6	17
West Midlands	73.0	58.2	-20.2	
England	66.4	52.3	-21.2	
FEMALES:				
Walsall	21.1	18.3	-13.3	5
West Midlands	19.9	15.2	-23.6	
England	17.5	13.5	-22.8	

3.2 CORONARY HEART DISEASE – PERSONS AGED 65 – 74

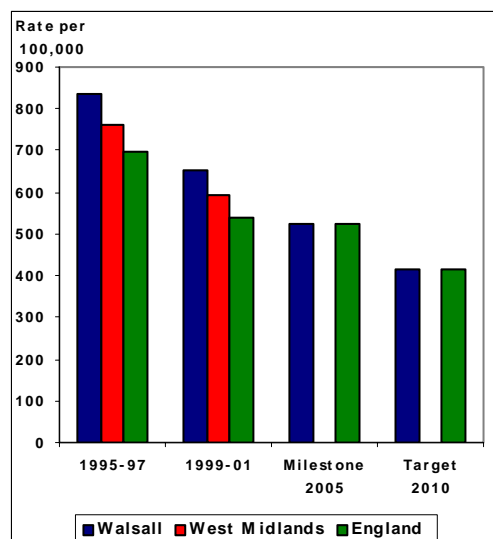
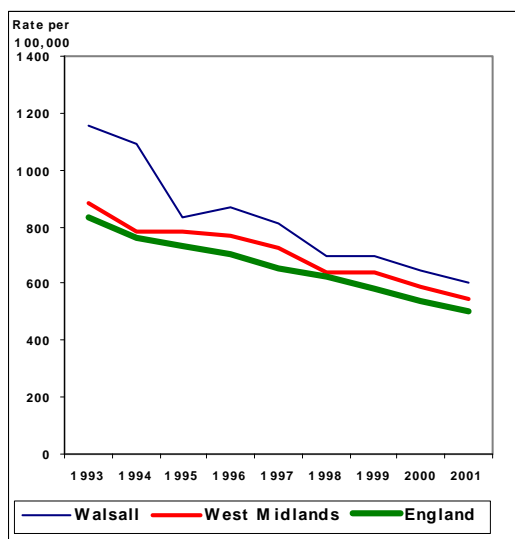
National Target

To reduce the death rate by at least 40% by 2010 (Milestone 25% reduction by 2005).

WALSALL'S TARGET			
BY YEAR	% REDUCTION	RATE (PER 100000)	ANNUAL LIVES SAVED
2010	-50.1	417.7	99
2005	-37.7	522.0	75

OUR HEALTHIER NATION

Age Standardised Mortality Rates – CHD Persons Aged 65 – 74



Source: Compendium of Clinical and Health Indicators 2002

Deaths from coronary heart disease in persons aged 65-74 (ICD10 120-125, ICD9 410-414 adjusted)

	1993	1994	1995	1996	1997	1998	1999	2000	2001
Number of Deaths in Walsall	273	262	198	205	192	164	166	153	142

Age Standardised Mortality Rate per 100,000 Population (Persons 65-74)

	1995-97 (Baseline)	1999-01	Cumulative % Reduction	Progress: Annual Lives Saved
PERSONS:				
Walsall	837.4	650.8	-22.3	45
West Midlands	759.2	591.7	-22.1	
England	696.1	540.8	-22.3	
MALES:				
Walsall	1192.8	953.2	-20.1	28
West Midlands	1093.8	853.1	-22.0	
England	1012.9	787.8	-22.2	
FEMALES:				
Walsall	530.7	386.8	-27.1	17
West Midlands	471.5	361.5	-23.3	
England	429.4	325.9	-24.1	

3.3 STROKE – PERSONS UNDER 65

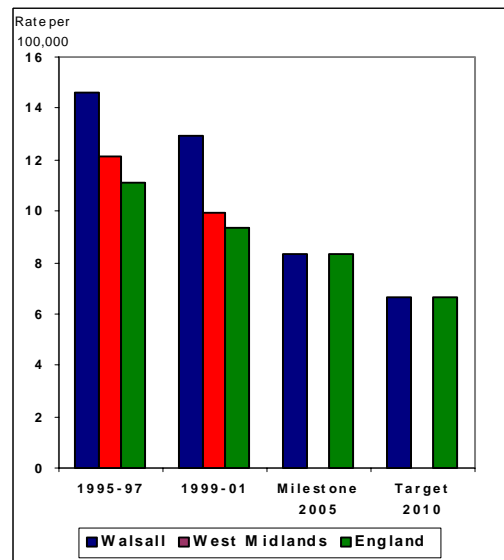
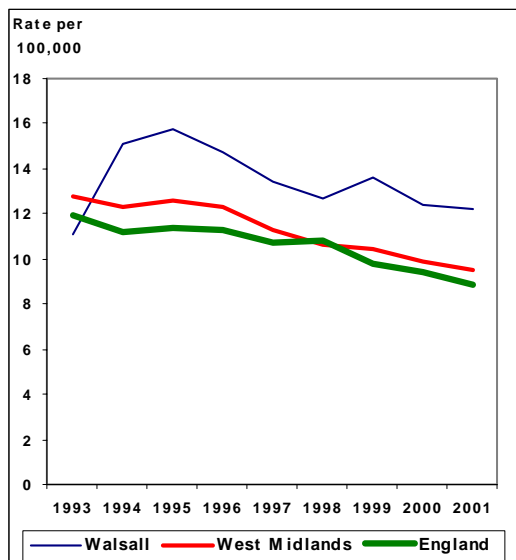
National Target

To reduce the death rate by at least 40% by 2010 (Milestone 25% reduction by 2005).

WALSALL'S TARGET			
BY YEAR	% REDUCTION	RATE (PER 100000)	ANNUAL LIVES SAVED
2010	54.2	6.66	18
2005	43.1	8.32	14

OUR HEALTHIER NATION

Age Standardised Mortality Rates – Stroke Persons Aged Under 65



Source: Compendium of Clinical and Health Indicators 2002

Deaths from stroke in persons aged under 65 (ICD10 160-169, 169, ICD9 430-438 adjusted)

	1993	1994	1995	1996	1997	1998	1999	2000	2001
Number of Deaths in Walsall	26	34	36	33	30	30	31	29	27

Age Standardised Mortality Rate per 100,000 Population (Persons under 65)

	1995-97 (Baseline)	1999-01	Cumulative % Reduction	Progress: Annual Lives Saved
PERSONS:				
Walsall	14.62	12.91	-11.7	4
West Midlands	12.1	9.95	-17.8	
England	11.1	9.34	-15.8	
MALES:				
Walsall	17.84	14.68	-17.7	3
West Midlands	13.84	11.53	-16.7	
England	12.73	10.55	-17.1	
FEMALES:				
Walsall	11.42	11.16	-2.2	1
West Midlands	10.37	8.39	-19.0	
England	9.58	8.16	-14.8	

3.3 STROKE – PERSONS AGED 65-74

National Target

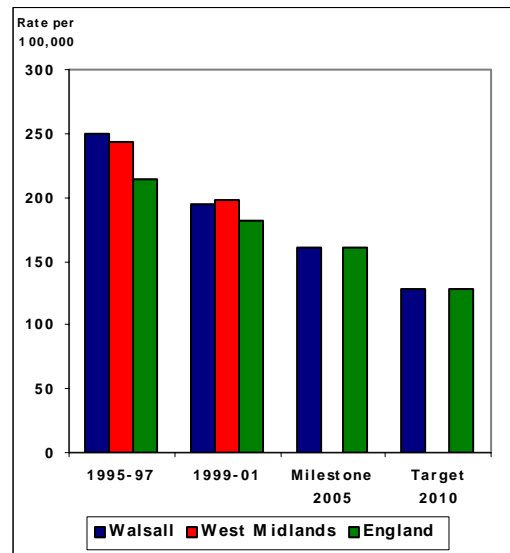
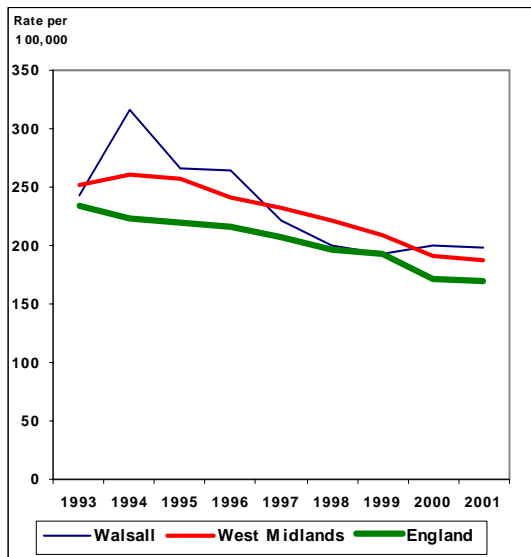
To reduce the death rate by at least 40% by 2010 (Milestone 25% reduction by 2005).

WALSALL'S TARGET

BY YEAR	% REDUCTION	RATE (PER 100000)	ANNUAL LIVES SAVED
2010	48.5	128.8	29
2005	35.7	161.0	21

OUR HEALTHIER NATION

Age Standardised Mortality Rates – Stroke Persons Aged 65 - 74



Source: Compendium of Clinical and Health Indicators 2002

Deaths from stroke in persons aged 65-74 (ICD10 160-169, 169, ICD9 430-438 adjusted)

	1993	1994	1995	1996	1997	1998	1999	2000	2001
Number of Deaths in Walsall	58	76	63	64	53	48	46	48	47

Age Standardised Mortality Rate per 100,000 Population (Persons aged 65-74)

	1995-97 (Baseline)	1999-01	Cumulative % Reduction	Progress: Annual Lives Saved
PERSONS:				
Walsall	250.2	195.3	-21.9	13
West Midlands	243.2	198.2	-18.5	
England	214.6	181.1	-15.6	
MALES:				
Walsall	277.6	236.2	-14.9	5
West Midlands	288.7	233.0	-19.2	
England	250.5	211.0	-15.8	
FEMALES:				
Walsall	225.2	160.0	-28.9	8
West Midlands	204.3	167.7	-17.9	
England	184.5	155.3	-15.8	

4. SAVING LIVES – CANCER

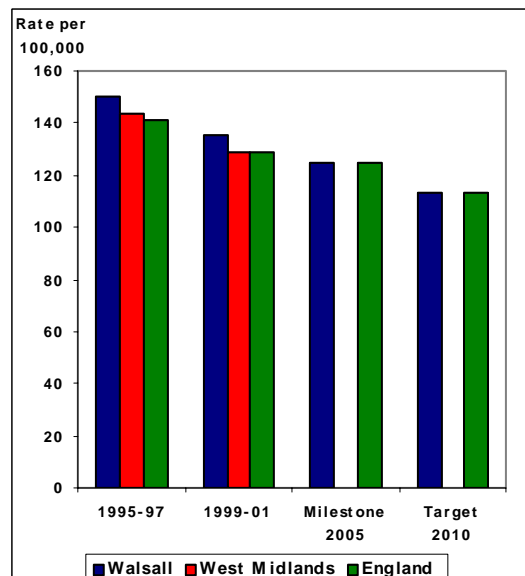
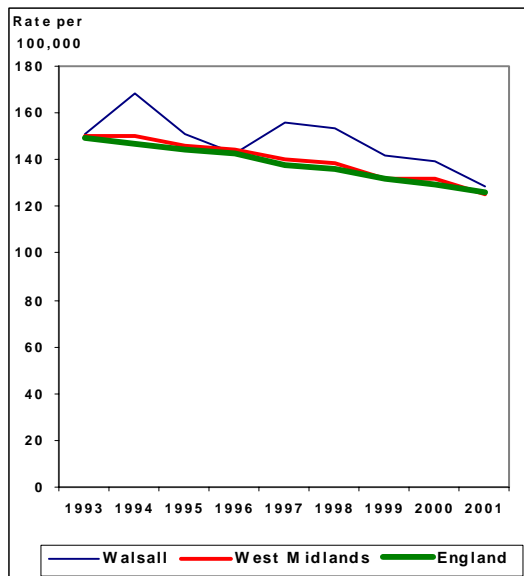
National Target

To reduce the death rate in people under 75 by at least 20% by 2010 (Milestone 12% reduction by 2005).

WALSALL'S TARGET			
BY YEAR	% REDUCTION	RATE (PER 100000)	ANNUAL LIVES SAVED
2010	-24.5	113.1	103
2005	-16.9	124.5	71

OUR HEALTHIER NATION

Age Standardised Mortality Rates from All Cancers Persons Aged Under 75



Source: Compendium of Clinical and Health Indicators 2002

Deaths from cancer in persons aged under 75 (ICD10 C00-C97)

	1993	1994	1995	1996	1997	1998	1999	2000	2001
Number of Deaths in Walsall	429	479	422	398	440	429	400	395	359

Age Standardised Mortality Rate per 100,000 Population (Persons under 75)

	1995-97 (Baseline)	1999-01	Cumulative Progress: % Reduction	Annual Lives Saved
PERSONS:				
Walsall	149.8	135.0	-9.9	35
West Midlands	143.6	128.6	-10.4	
England	141.4	129.1	-8.6	
MALES:				
Walsall	178.3	157.5	-11.6	21
West Midlands	164.4	145.6	-11.4	
England	161.0	145.2	-9.8	
FEMALES:				
Walsall	124.3	114.1	-8.2	14
West Midlands	125.4	113.5	-9.5	
England	124.7	114.9	-7.8	

Sections 4.1 to 4.2 below indicate progress against local targets for reducing deaths from lung cancer in persons under 75, and breast cancer in women aged 50-69.

4.1 LUNG CANCER – PERSONS UNDER 75

National Target

To reduce the death rate from lung cancer in people under 75 by 20% by 2010 (Milestone 12% reduction by 2005).

WALSALL'S TARGET (PERSONS)			
BY YEAR	% REDUCTION	RATE (PER 100000)	ANNUAL LIVES SAVED
2010	-30.1	27.0	33
2005	-23.1	29.7	25

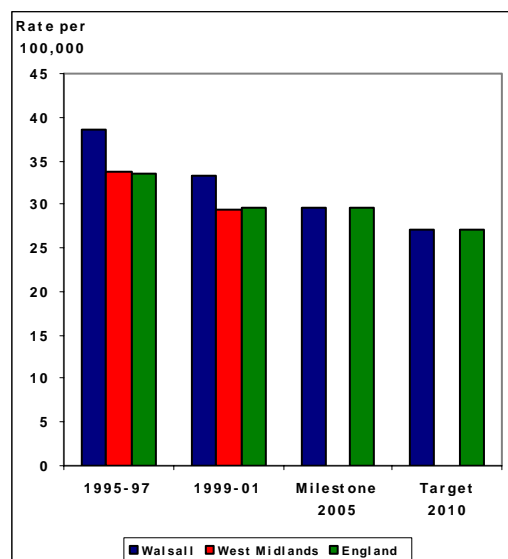
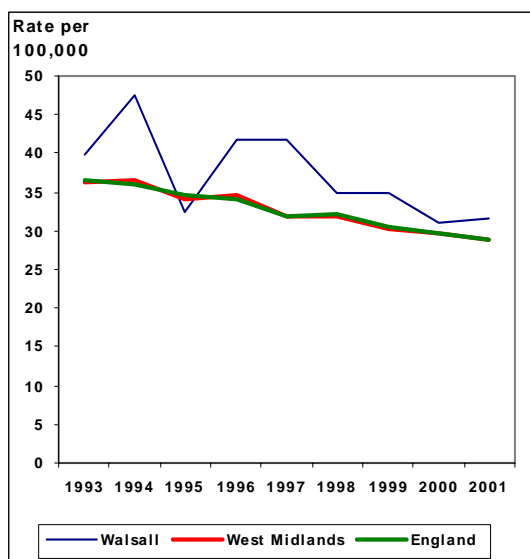
Walsall targets by gender are:

Males: reduce the death rate from lung cancer in males under 75 by 34.5% by 2010 (to 37.1 per 100000).

Females: reduce the death rate from lung cancer in females under 75 by 19% by year 2010 (to 17.8 per 100000).

OUR HEALTHIER NATION

Age Standardised Mortality Rates from Lung Cancer Persons Aged Under 75



Source: Compendium of Clinical and Health Indicators 2002

Deaths from lung cancer in persons aged under 75 (ICD10 C33-34, ICD9 162 adjusted)

	1993	1994	1995	1996	1997	1998	1999	2000	2001
Number of Deaths in Walsall	117	136	95	116	119	101	101	90	91

Age Standardised Mortality Rate per 100,000 Population (Persons under 75)

	1995-97 (Baseline)	1999-01	Cumulative Progress: % Reduction	Annual Lives Saved
PERSONS:				
Walsall	38.6	33.3	-13.7	16
West Midlands	33.7	29.5	-12.5	
England	33.6	29.6	-11.9	
MALES:				
Walsall	56.8	48.2	-15.1	14
West Midlands	47.8	40.9	-14.4	
England	46.3	39.0	-15.7	
FEMALES:				
Walsall	21.8	19.3	-11.5	2
West Midlands	20.7	18.9	-8.6	
England	22.3	21.1	-5.4	

4.2 BREAST CANCER – FEMALES AGED 50 - 69

National Target

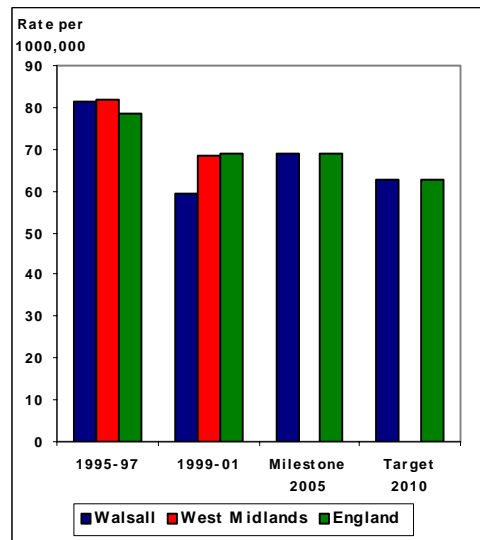
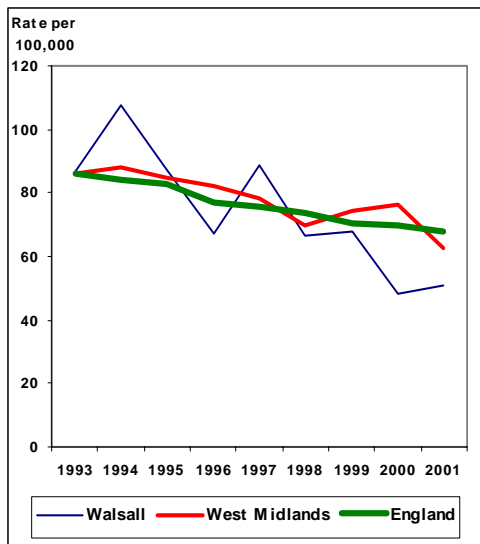
To reduce the death rate from breast cancer in women aged 50-69 by 20% by 2010 (Milestone 12% reduction by 2005).

WALSALL'S TARGET

BY YEAR	% REDUCTION	RATE (PER 100000)	ANNUAL LIVES SAVED
2010	-22.9	62.8	6
2005	-15.2	69.1	4

OUR HEALTHIER NATION

Age Standardised Mortality Rates from Breast Cancer Females Aged 50 – 69



Source: Compendium of Clinical and Health Indicators 2002

Deaths from breast cancer in women aged 50-69 (ICD10 C50 ICD9 174 adjusted)

	1993	1994	1995	1996	1997	1998	1999	2000	2001
Number of Deaths in Walsall	25	32	27	20	27	20	20	14	15

Age Standardised Mortality Rate per 100,000 Population (Women aged 50-69)

	1995-97 (Baseline)	1999-01	Cumulative % Reduction	Progress: Annual Lives Saved
PERSONS:				
Walsall				
West Midlands				
England				
MALES:				
Walsall				
West Midlands				
England				
FEMALES:				
Walsall	81.5	59.3	-27.2	8
West Midlands	81.8	68.3	-16.5	
England	78.5	68.9	-12.2	

5. SAVING LIVES – MENTAL HEALTH

National Target

To reduce the death rate from suicide and undetermined injury in people of all ages by at least 20% by 2010 (Milestone 12% reduction by 2005).

This headline target is used as a crude proxy for mental health.

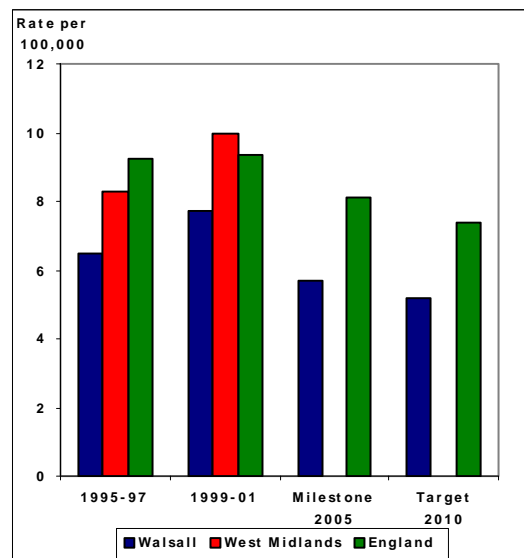
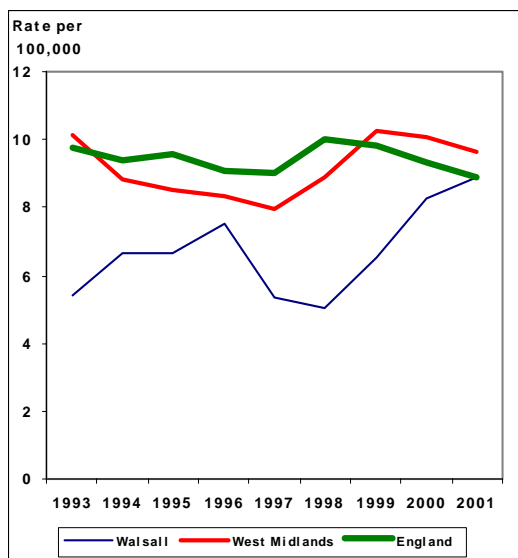
Walsall's mortality rate has been well below the national and regional average for several years and in 1995-7 was already below the national target rate for 2010. The Walsall target is nevertheless to achieve a further 20% reduction by 2010.

WALSALL'S TARGET			
BY YEAR	% REDUCTION	RATE (PER 100000)	ANNUAL LIVES SAVED
2010	-20.0	5.2	3
2005	-12.0	5.7	2



OUR HEALTHIER NATION

Age Standardised Mortality Rates for Suicide and Undetermined Injury Persons All Ages



Source: Compendium of Clinical and Health Indicators 2002

Deaths from suicide and undetermined injury, all ages (ICD10 X60-X84, Y10-Y34 exc Y33.9: ICD E950-95 and E980-989 excluding E988.8)

	1993	1994	1995	1996	1997	1998	1999	2000	2001
Number of Deaths in Walsall	14	18	18	20	14	13	16	21	22

Age Standardised Mortality Rate per 100,000 Population

	1995-97 (Baseline)	1999-01	Cumulative % Reduction	Progress: Annual Lives Saved
PERSONS:				
Walsall	6.5	7.71	+18.6	+2*
West Midlands	8.28	9.95	+20.2	
England	9.22	9.37	+1.6	
MALES:				
Walsall	8.61	13.02	+51.2	+5*
West Midlands	12.83	15.76	+22.8	
England	14.21	14.63	+3.0	
FEMALES:				
Walsall	4.57	2.74	-40.0	3
West Midlands	3.89	4.41	+13.4	
England	4.49	4.38	+2.4	

* increase in deaths

6. SAVING LIVES – ACCIDENTS

6.1 Mortality Target for Accidents

National Target

To reduce the death rate from accidents by at least 20% by 2010 (Milestone 12% reduction by 2005)

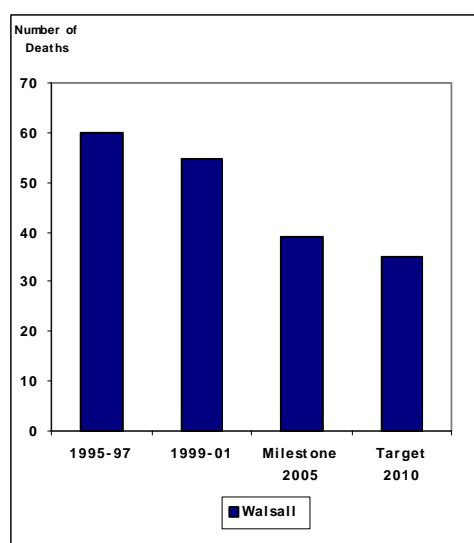
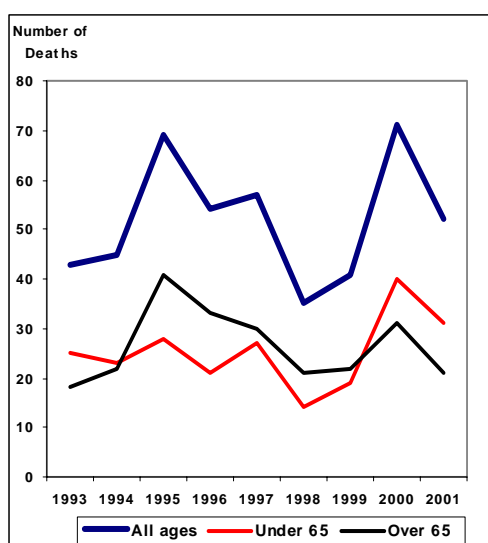
At the time when the Local Targets Discussion document was prepared, directly standardised mortality rates for 1995-97 (baseline) had not been published for 'all ages'. As a proxy, the crude number of deaths was therefore adopted to set the local target. A further complication in setting a local target was that there had been a notable peak in Walsall deaths from accidents in 1995 followed by a sustained substantial decrease from this peak in subsequent years to 1999. This meant that the national target % reduction from 1995-97 baseline had already been achieved in Walsall by 1997-99. The Walsall target for 2010 was therefore set as a further 20% reduction in deaths from 1997-99 average, equivalent to a 41.7% reduction from the official 1995-97 OHN baseline period.

As the trend data of directly standardised mortality rates for all ages has still not been published, this report continues to use number of deaths for target and monitoring purposes.

WALSALL'S TARGET			
BY YEAR	% REDUCTION	NUMBER OF DEATHS	ANNUAL LIVES SAVED
2010	-41.7	35	25
2005	-35.0	39	21

OUR HEALTHIER NATION

Number of Deaths from Accidents – Persons, Walsall



Source: Compendium of Clinical and Health Indicators

Number of Deaths from Accidents (ICD10 V01-X59, ICD9 E800-928, excl E870-E879)

	1993	1994	1995	1996	1997	1998	1999	2000	2001
Number of Deaths in Walsall									
Under 65	25	23	28	21	27	14	19	40	31
Over 65	18	22	41	33	30	21	22	31	21
Total	43	45	69	54	57	35	41	71	52

Age Standardised Mortality Rate per 100,000 Population

	1995-97 (Baseline)	1999-01	Cumulative % Reduction	Progress: Annual Lives Saved
PERSONS:				
Walsall	19.76	15.97	-19.1	5
West Midlands	15.27	16.62	+8.8	
England	15.91	15.99	+0.5	
MALES:				
Walsall	23.43	22.52	-3.9	+5
West Midlands	20.80	22.10	+6.2	
England	21.98	21.96	-	
FEMALES:				
Walsall	15.25	9.52	-37.6	10
West Midlands	9.79	11.33	+15.7	
England	10.04	10.20	+1.6	

6.2 Serious Injury Target

National Target

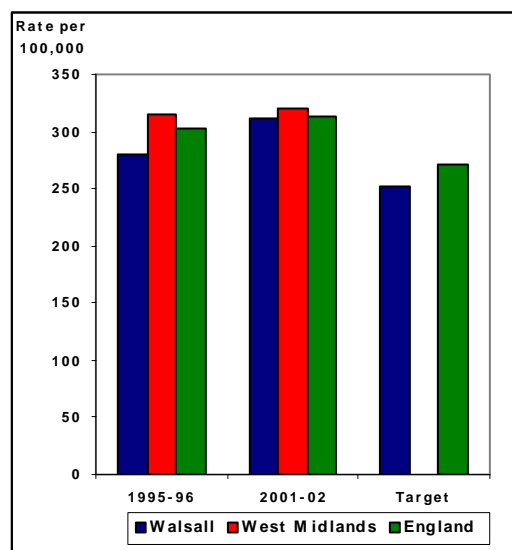
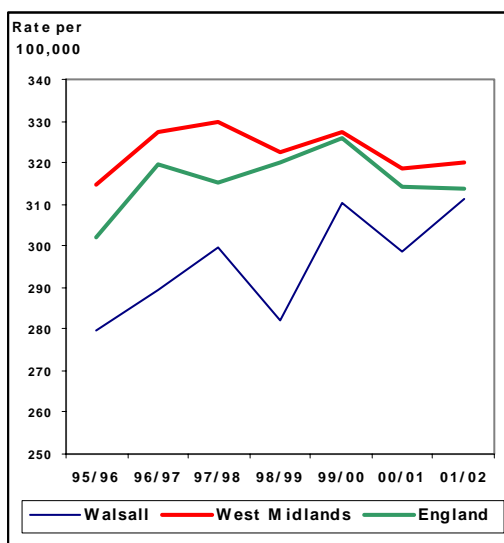
To reduce serious injury from accidents by at least 10% by 2010

The serious injury target relates to accidental injuries requiring a hospital stay of more than 3 days. When considering a local target, it was noted that the serious injury rate in Walsall was already below the national and regional rate in 1995/6 (baseline year) and would require only a 2.4% reduction to achieve the national target rate for 2010. The local target set was therefore to achieve a further 10% reduction by 2010 from the 1995/6 baseline.

WALSALL'S TARGET			
BY YEAR	% REDUCTION	RATE (PER 100000)	REDUCTION IN HOSPITAL EPISODES
2010	-10.0	251.6	85

OUR HEALTHIER NATION

Serious Accidental Injury Relating to Hospital Admissions Age Standardised Rates - Persons All Ages



Source: Compendium of Clinical and Health Indicators 2002

Age Standardised Rate per 100,000 Population for Hospital Episodes: Serious Accidental Injury Relating to Hospital Admissions

	1995-96 (Baseline)	2001-02	Cumulative % Reduction	Progress: Annual Reduction In Hospital Episodes
PERSONS:				
Walsall	279.6	311.3	+11.3	+116*
West Midlands	314.9	320.0	+1.6	
England	302.0	313.9	+3.9	
MALES:				
Walsall	273.4	335.5	+22.7	+87*
West Midlands	313.8	331.7	+5.7	
England	300.7	317.0	+5.4	
FEMALES:				
Walsall	267.8	271.8	+1.5	+26*
West Midlands	297.1	292.5	-1.5	
England	282.3	294.5	+4.3	

***increase in hospital episodes**

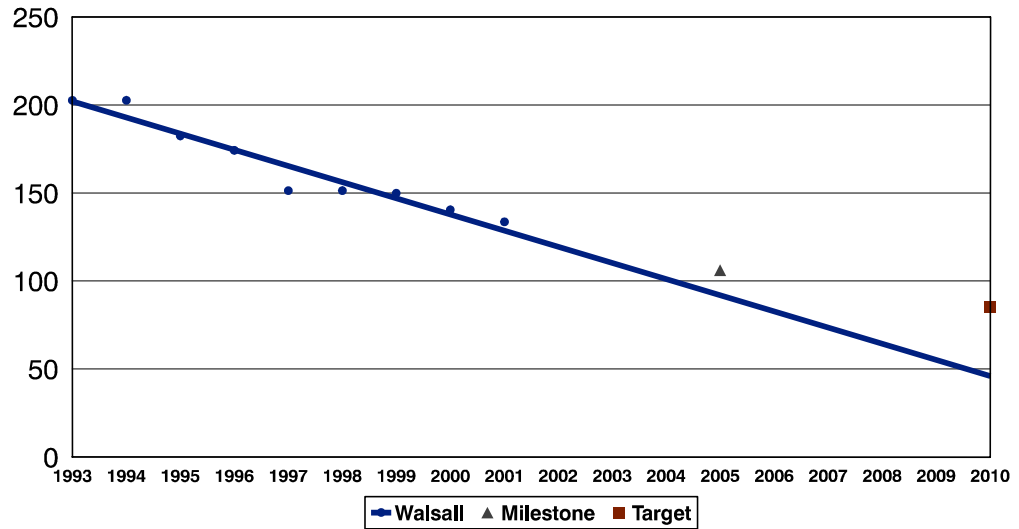
Note: Figures for 'persons' includes cases with sex unknown; male total plus female total therefore does not add to persons total.

APPENDIX

WALSALL MONITORING DATA FROM 1993 EXTRAPOLATED TO 2010

OUR HEALTHIER NATION

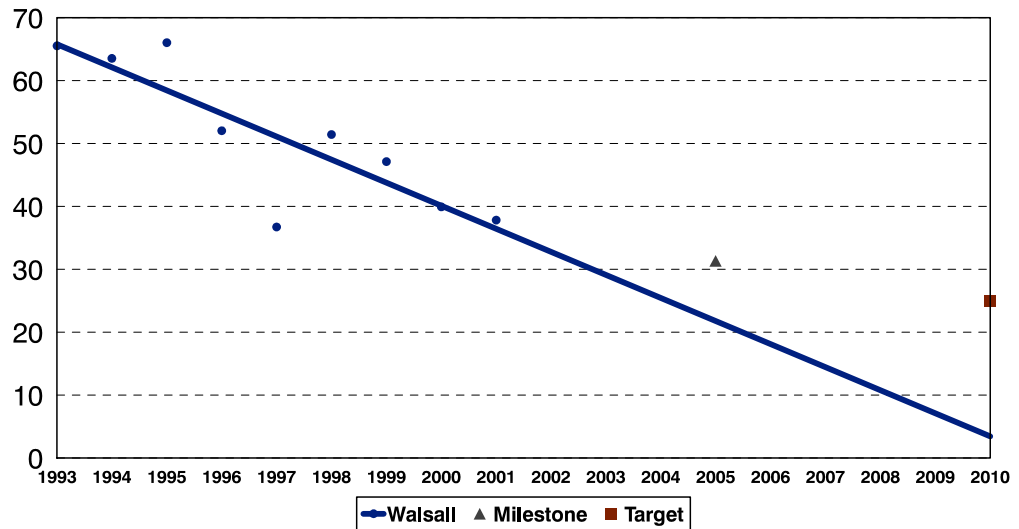
Age Standardised Mortality Rates from All Circulatory Diseases Persons Aged Under 75



Source: Compendium of Clinical and Health Indicators 2002

OUR HEALTHIER NATION

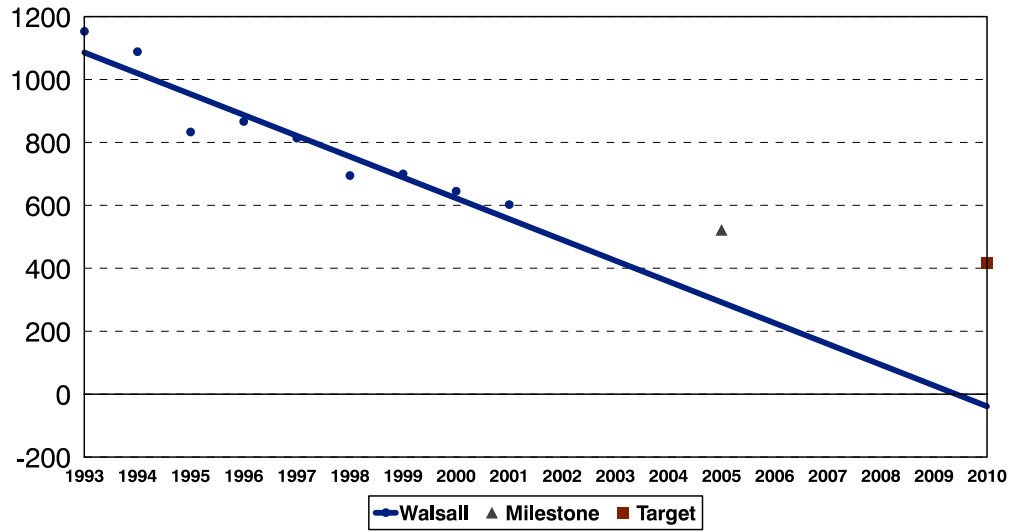
Age Standardised Mortality Rates from CHD Persons Aged Under 65



Source: Compendium of Clinical and Health Indicators 2002

OUR HEALTHIER NATION

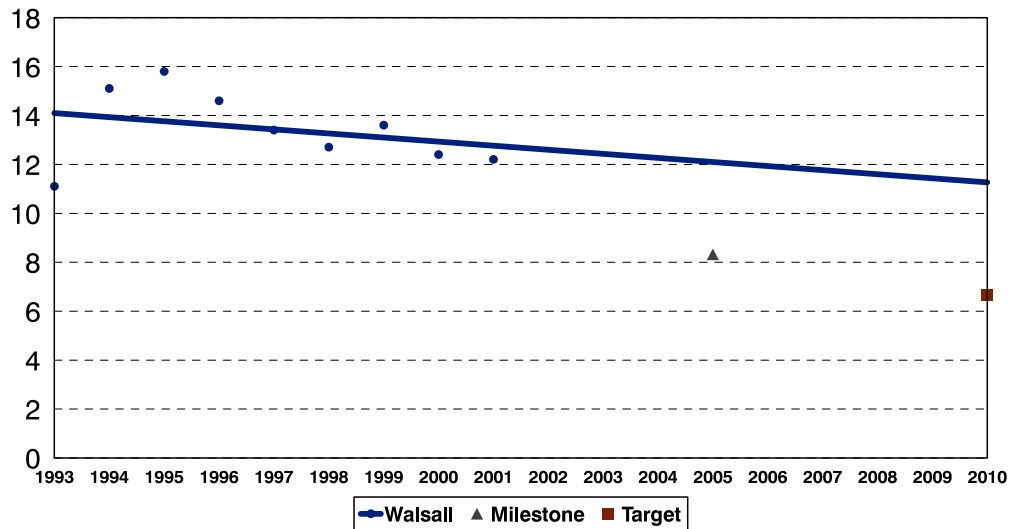
Age Standardised Mortality Rates from CHD Persons Aged 65 - 74



Source: Compendium of Clinical and Health Indicators 2002

OUR HEALTHIER NATION

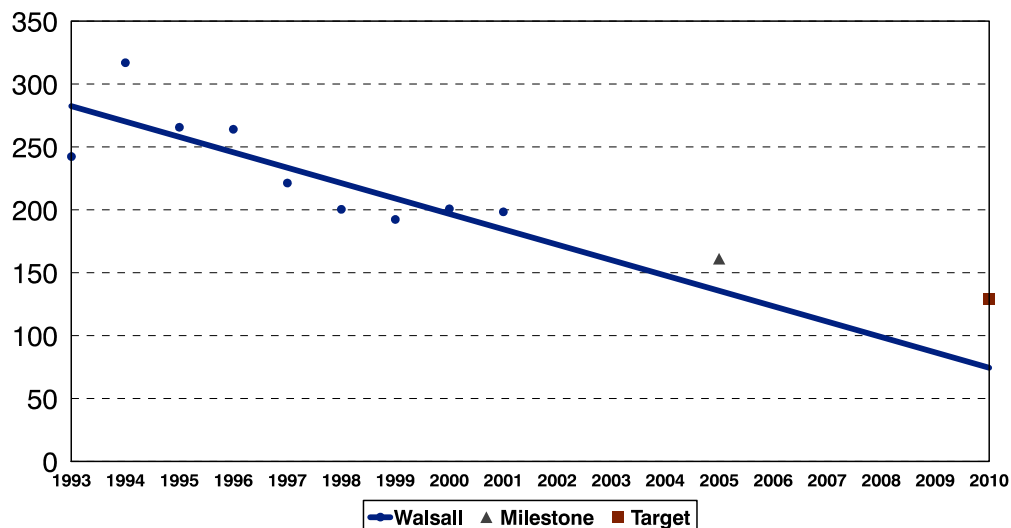
Age Standardised Mortality Rates from Stroke Persons Aged Under 65



Source: Compendium of Clinical and Health Indicators 2002

OUR HEALTHIER NATION

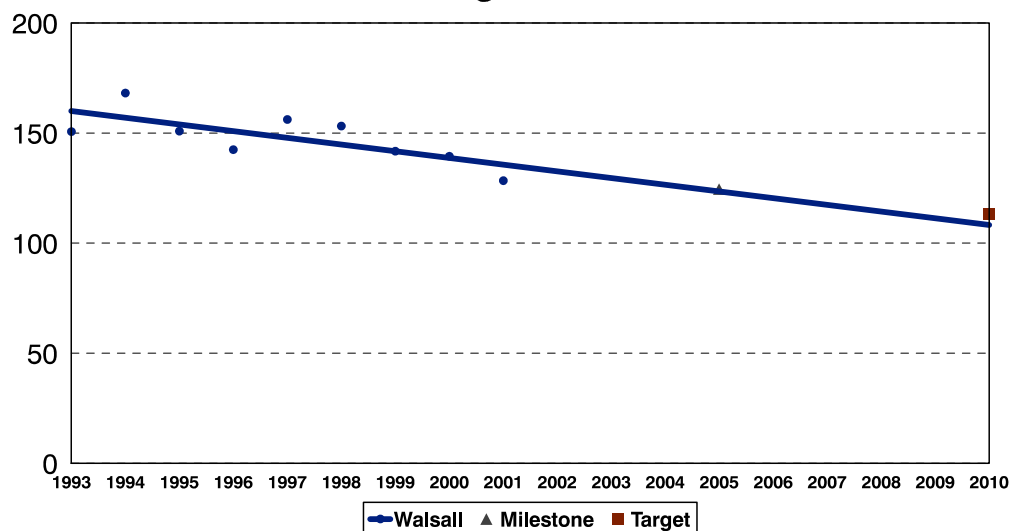
Age Standardised Mortality Rates from Stroke Persons Aged 65 - 74



Source: Compendium of Clinical and Health Indicators 2002

OUR HEALTHIER NATION

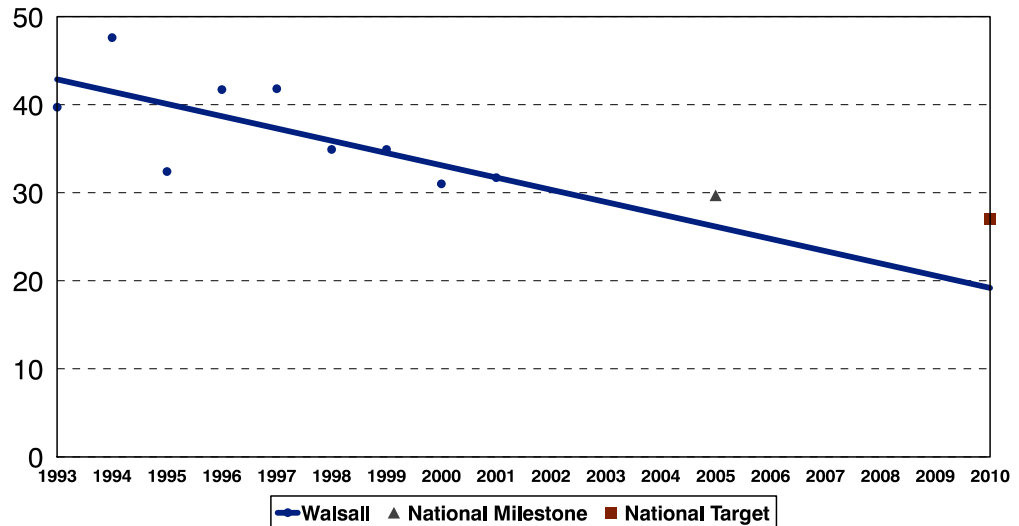
Age Standardised Mortality Rates from All Cancers Persons Aged Under 75



Source: Compendium of Clinical and Health Indicators 2002

OUR HEALTHIER NATION

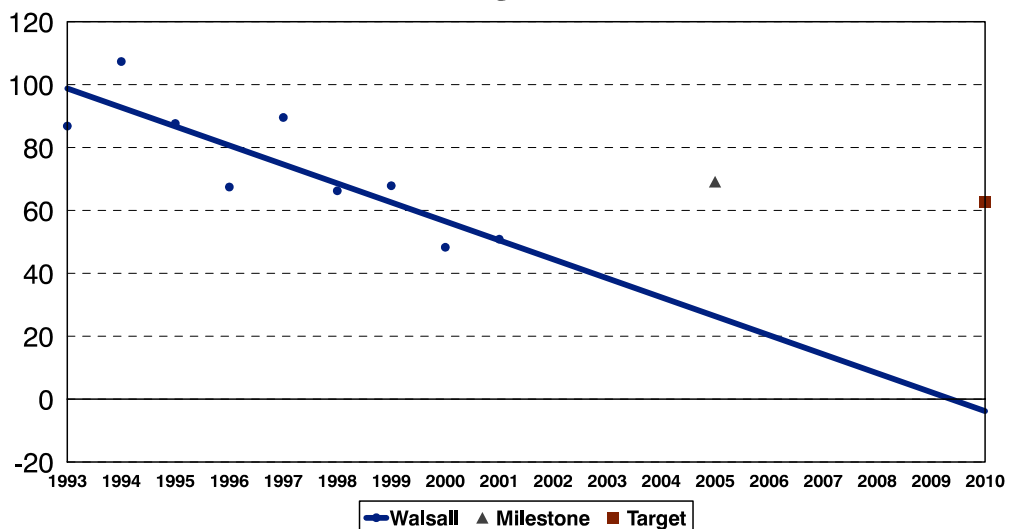
Age Standardised Mortality Rates from Lung Cancer Persons Aged Under 75



Source: Compendium of Clinical and Health Indicators 2002

OUR HEALTHIER NATION

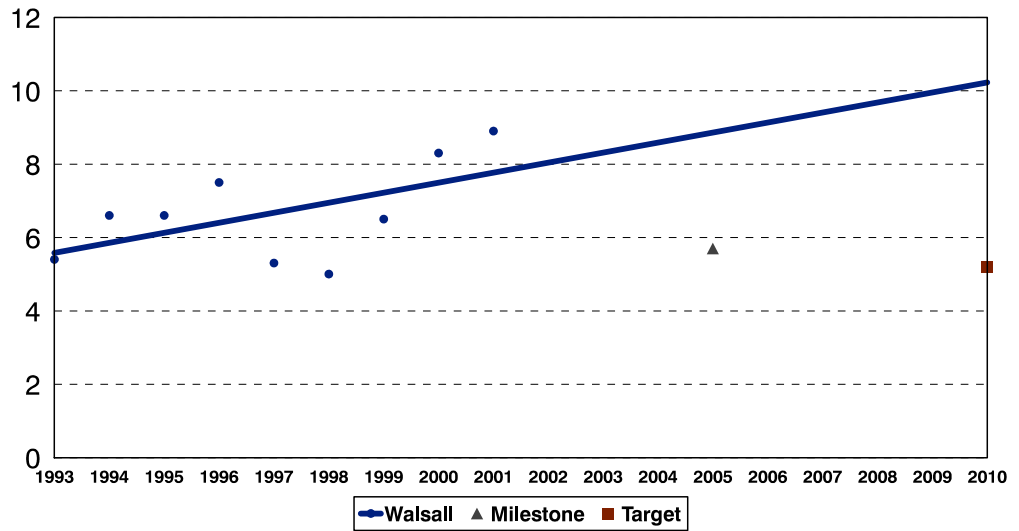
Age Standardised Mortality Rates from Breast Cancer Females Aged 50 - 69



Source: Compendium of Clinical and Health Indicators 2002

OUR HEALTHIER NATION

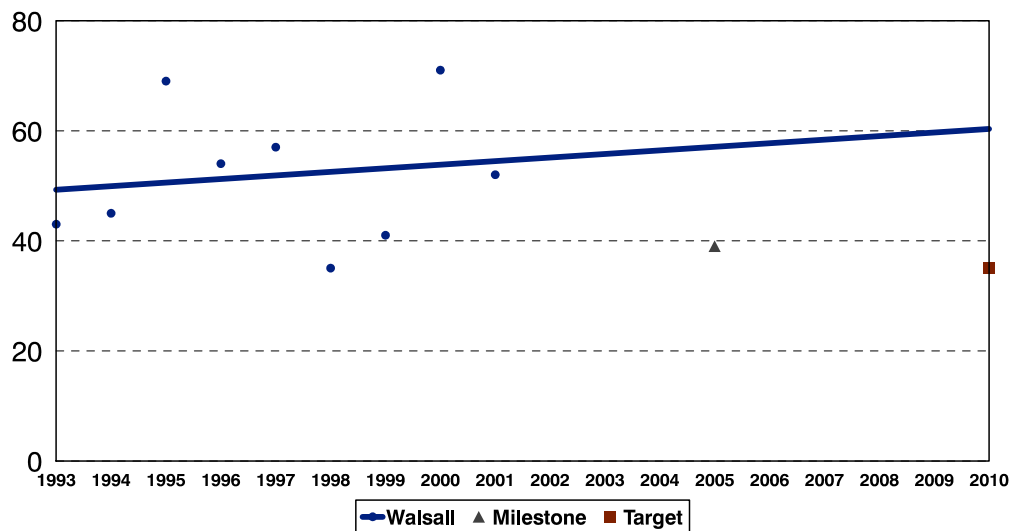
Age Standardised Mortality Rates Suicide and Undetermined Injury Persons All Ages



Source: Compendium of Clinical and Health Indicators 2002

OUR HEALTHIER NATION

Number of Deaths from Accidents - Persons All Ages Walsall



Source: Compendium of Clinical and Health Indicators 2002

