

**Saving Lives**

OUR   
**HEALTHIER**  
NATION

**TARGETS AND MONITORING DATA**  
**WALSALL – TEN YEARS ON**

Public Health Report No: PH0044 – GF0409

Author: Graham Fee  
Issued: May 2009

Public Health Directorate

NHS Walsall  
Jubilee House  
Bloxwich Lane  
Walsall  
WS2 7JL  
Telephone: 01922 618388  
Facsimile: 01922 618360

[www.walsall.nhs.uk](http://www.walsall.nhs.uk)



# **SAVING LIVES**

## **OUR HEALTHIER NATION**

### **TARGETS AND MONITORING DATA WALSALL – TEN YEARS ON**

#### **CONTENTS**

	<b>Page No</b>
Foreword	1
1. Introduction	2
2. Summary of Progress Towards ‘Our Healthier Nation’ Headline Targets in Walsall After 10 Years	4
2.1 Coronary Heart Disease, Stroke and Related Conditions	
2.2 Cancer	
2.3 Mental Health – Suicide	
2.4 Accidents	
3. Saving Lives – Coronary Heart Disease, Stroke and Related Conditions	9
3.1 Coronary Heart Disease – Persons under 65	
3.2 Coronary Heart Disease – Persons 65-74	
3.3 Stroke – Persons under 65	
3.4 Stroke – Persons 65-74	
4. Saving Lives – Cancer	19
4.1 Lung Cancer – Persons under 75	
4.2 Breast Cancer – Females aged 50-69	
5. Saving Lives – Mental Health	25
6. Saving Lives – Accidents	27
6.1 Mortality Target for Accidents	
6.2 Mortality from Accidental Falls	
Appendix 1 Walsall Monitoring Data from 1993 Extrapolated to 2010	30
Appendix 2 Walsall Progress in Tackling Inequalities through Our Healthier Nation Target Areas: Walsall vs National (England) Mortality Rates	36
Appendix 3 Our Healthier Nation Indicators across the West Midlands in 2005-07	40
Addendum: CHD Mortality Among Under 65s in Walsall	48

## SAVING LIVES - OUR HEALTHIER NATION

### TARGETS AND MONITORING DATA WALSALL - TEN YEARS ON

#### FOREWORD

I am pleased to present our annual report monitoring Walsall's progress towards the year 2010 targets set out in the Government's 'Our Healthier Nation' (OHN) strategy. Although the strategy has been accorded a lower profile in recent years, the same OHN mortality targets for circulatory disease, cancer and suicides are included in the broader 'Choosing Health' strategy (2004), with a strengthened emphasis on reducing inequalities. In addition, the same targets were adopted as Public Service Agreement targets. It is now ten years since the baseline period upon which the targets were set, and the latest published data up to 2007 therefore enables Walsall's progress over a decade to be reviewed and areas of concern to be highlighted.

***A decade on from the baseline period (1995-97), encouraging progress has been made towards meeting the mortality targets for circulatory disease, cancer and accidents although it is proving difficult to achieve a consistent downward trend in suicide mortality. Over 270 lives per year are already being saved in Walsall through movement towards the targets up to 2005-07. Achievement of year 2010 targets over the next four years would save a further 120 lives per year.***

Tackling inequalities remains a substantial challenge and this annual report again highlights the differences in mortality between Walsall and the national (England) average. The inequalities gap between Walsall and national average mortality rates has narrowed for accidents but has widened for circulatory disease, cancer and suicide. The widening gap arises generally because the mortality rates in Walsall have fallen marginally more slowly than the national average. There are also gender inequalities within several of the targets, which are discussed in the report.

***More than 100 extra lives per year would be saved by reducing Walsall mortality rates to the national averages for circulatory disease and cancer.***

I am confident that we can meet these challenges and commend this report as a resource to inform and assist in achieving the targets and reducing inequalities.

My thanks go to Graham Fee and Rehman Teagle who compiled the report.

**Dr Sam Ramaiah**  
**Director of Public Health**

## 1. INTRODUCTION

The national strategy *Saving Lives - Our Healthier Nation* (1999) aimed to improve the health of the population as a whole in England and in addition to improve the health of the worst off in society, and in so doing reduce health inequalities. National targets for year 2010 were set in four areas: coronary heart disease and stroke, cancer, mental health and accidents. Intermediate 'milestone' targets were also set for year 2005.

In February 2001, the Walsall Department of Public Health Medicine published a discussion document 'Saving Lives – Our Healthier Nation: Baselines and Local Targets'. This report considered the national targets, the national and Walsall baselines and local past performance trends. Having regard also to the need to reduce health inequalities between Walsall and other districts in England, the report recommended a series of targets for Walsall. In most cases, the proposed Walsall targets required larger percentage reductions for the various indicators than for the national targets because Walsall baseline mortality rates were higher than nationally. For some of the national 'headline' targets, local sub targets were also recommended which would contribute to achievement of the 'headline' targets. These local targets were considered challenging but achievable and were agreed by Walsall Health Authority, and subsequently adopted by Walsall Teaching Primary Care Trust.

The 'Choosing Health' White Paper in 2004 built on the Our Healthier Nation strategy and Walsall was included as one of 88 Primary Care Trusts across England as a 'Spearhead' PCT to drive forward this agenda. A series of Public Service Agreement (PSA) targets were established at national level, which included mortality rates for cardiovascular disease, cancer, and suicide rates, as well as targets related to smoking, breastfeeding, obesity and teenage conceptions. The Birmingham and Black Country Strategic Health Authority (now the West Midlands SHA) subsequently set PCTs year 2010 targets for each of the PSA areas. Those for cardiovascular disease, cancer and suicide headline targets are included in this annual monitoring report as LDP/'Spearhead' targets (replacing the previous targets). For cardiovascular and cancer mortality, these LDP/Spearhead targets are slightly more challenging than the previous targets. However, the local sub-targets in this report remain as originally specified in the February 2001 discussion document.

The targets cover the following areas:

- **Headline target: Mortality rate for coronary heart disease, stroke and related conditions in people under 75 (all circulatory diseases)**
  - **Walsall sub-targets to support the headline circulatory disease target:**
    - CHD mortality rate in under 65s
    - CHD mortality rate in ages 65-74
    - Stroke mortality rate in under 65s
    - Stroke mortality rate in ages 65-74
- **Headline target: Mortality rate for all cancers in people under 75**
  - **Walsall sub-targets to support the headline cancer target:**
    - Lung cancer mortality rate in under 75s
    - Breast cancer mortality rate in women aged 50-69
- **Headline target: Mental health – suicide rate, all ages**

This report examines the progress achieved towards the Walsall targets in the ten years from 1995-97 up to 2005-07, using the most recent data available from NCHOD. Trends since 1995 are shown, together with comparisons with West Midlands regional data and national data. Because of inevitable year-to-year fluctuations, the main measure of progress used in the report is monitoring data for the triennium 2005-07 compared to the baseline period 1995-97 (as recommended by the Department of Health). The report is therefore monitoring progress in Walsall 'Ten Years On', with a further 4 years to run to the target year 2010.

In addition, the report also examines progress in reducing inequalities between Walsall and national mortality rates in the target areas covered by Our Healthier Nation. This is reported in more detail in Appendix 2, which should be read in conjunction with the relevant sections in the main body of the report. Appendix 3 maps the inequalities across the West Midlands region, highlighting Walsall's relative position.

The report identifies a significant rise in CHD mortality among under 65s in Walsall during both 2006 and 2007. An Addendum has therefore been included this year, which investigates these increases and considers provisional data for 2008. The latter shows a return to the previous downward trend.

## 2. SUMMARY OF PROGRESS TOWARDS OUR HEALTHIER NATION HEADLINE TARGETS IN WALSALL AFTER 10 YEARS.

**Achievement of the year 2010 targets will save 391 lives per year in Walsall relative to the average level of deaths during the baseline period 1995-97.**

By 2007 Walsall had achieved an annual reduction of 272 deaths, which is almost 70% of the year 2010 target. Walsall is therefore well on the way to achieving the overall target for annual lives saved. However, achievement of the ambitious mental health (suicide rate) target is in doubt and there is also a risk that the cancer and accident targets may be under achieved. The table below summarises progress by headline target.

TARGET AREA	WALSALL TARGET 2010	PROGRESS UP TO YEAR 2007		IS WALSALL ON TREND TO ACHIEVE TARGET?	HAVE INEQUALITY GAPS (WALSALL vs ENGLAND) BEEN REDUCED?
		% REDUCTION	ANNUAL LIVES SAVED		
All circulatory disease	50.7% reduction in death rate	-41.5%	209	✓	Gap of 20% in 1995-97 has <b>increased</b> to 25% in 2005-07.
Cancer	27.5% reduction in death rate	-13.6%	53	✓?	<b>Increase</b> in gap from 6% in 1995-97 to 12% in 2005-07.
Mental health – suicide rate	20% reduction in death rate	+15.7%	+1 (increase in deaths)	X	<b>Previous 'favourable' gap almost eliminated</b> (Walsall rate now only 4% below England).
Accidents	41.7% reduction in death rate	-28.8%	11	✓?	<b>'Favourable'</b> gap created by reduced rate mortality in Walsall versus virtually nil reduction in England rate.
<b>TOTAL LIVES SAVED</b>			<b>272</b>		

A summary of progress in each of the target areas is outlined below.

## 2.1 Coronary Heart Disease, Stroke and Related Conditions (all circulatory diseases)

The Walsall mortality rate for **all circulatory diseases** in people under 75 has continued to fall, maintaining the long-term downward trend. **A 42% reduction had been achieved by 2005-07 against the baseline, resulting in 209 fewer deaths each year.** The year 2005 milestone (35.6% reduction) has been achieved and year 2010 target (50.7% reduction) should also be achieved if this trend continues. However, the national mortality rate has fallen by 44% over the past decade and therefore the inequality gap between Walsall and the national average rate has widened.

***The Walsall mortality rate from all circulatory disease among the under 75s in 2005-07 was 25% higher than nationally, compared to 20% higher in 1995-97. Reducing the Walsall mortality rate for all circulatory disease among the under 75s to the level of the national rate would save an additional 56 lives per year in Walsall.***

Nationally, the all circulatory disease mortality rate in men is more than double that of women and the pattern is similar in Walsall (men 237.3, women 105.8). In 2005-07 the all circulatory disease mortality rate for men in Walsall was 30% higher than the national rate for men, whilst for Walsall women the rate was over 12% higher than nationally (See pages 9-10 and Appendix 2).

Appendix 3 highlights the wide variation in circulatory disease mortality rates across the West Midlands. The Walsall rate is over 55% higher than in Herefordshire (which has the lowest rate in the West Midlands) but 25% lower than in the Heart of Birmingham PCT area (which has the highest rate in the West Midlands). Similar variations across the region are noted for the component conditions of circulatory disease.

### 2.1.1 Coronary Heart Disease (CHD)

The Walsall mortality **rates for coronary heart disease (CHD) in the under 65s and in 65-74 year age group have fallen by 36% and 56% respectively** over the decade to 2005-07. This means that 151 fewer Walsall people under 75 died each year from CHD in 2005-07 than in 1995-97. For the 65-74 age group, the year 2010 target has already been exceeded. The rate for the under 65s marginally underachieved the 2005 'milestone' rate and **an increase in the under 65s CHD mortality rate in both 2006 and 2007 gives cause for concern.** A further 25% reduction is required from the 2005-07 average in order to achieve the year 2010 target among the under 65s. An Addendum to this report explores the 2006 and 2007 increases and indicates that provisional data for 2008 shows a substantial reduction from the high figures of 2006 and 2007, restoring the previous downward trend.

**For the under 65s**, the Walsall reduction over the decade up to 2005-07 has been lower than nationally for both men and women: 35% vs 44% and 40% vs 50% respectively. Consequently, **the inequalities gap in Walsall has widened**, with the mortality rate in Walsall 45% higher than the national rate in 2005-07.

**In the 65-74 years age group**, mortality reductions of 54% and 61% have been achieved for men and women respectively in Walsall over the decade to 2005-07.

These reductions have been higher than the percentage national reductions and as a result **the Walsall inequalities gap has reduced** from 20% to 12% above the national rate. (See pages 11-14 for charts and data and Appendix 2)

### 2.1.2 Stroke

The Walsall mortality **rates for stroke in the under 65s and in the 65-74 age group have fallen by 38% and 37% respectively** in 2005-07 against baseline, resulting in 38 fewer stroke deaths per year than in 1995-97. There was a substantial fall in Walsall stroke deaths among the under 65s in year 2007, which reached a record low and was below the national and regional rates in this age group. The year 2010 target among the under 65s will be achieved if deaths can be held consistently around the 2007 level. **However, in the 65-74yr age group, the rate has been an increasing since 2003, which is a cause for concern.** From the 2005-7 average position, a further reduction of 18% is needed over the following four years to achieve the year 2010 target for this older age group.

The stroke mortality rate among Walsall women under 65yrs has fallen much faster than the national rate, so that by 2005-07 the Walsall rate was marginally lower than the national rate. For older women the Walsall rate has fallen slightly faster than nationally but nevertheless remains 19% higher than nationally. **Among Walsall men, the stroke mortality rate has fallen more slowly than nationally; the rates for men in both age groups in Walsall were more than 50% higher than national rates in 2005-07.** (Note that, as there are relatively 'small numbers' of stroke deaths under 65, there can be large fluctuations in percentage changes -see pages 15-18 for charts and data and Appendix 2).

## 2.2 Cancer

**The Walsall mortality rate for all cancers in people under 75 was almost 14% lower in 2005-07 than in 1995-97, resulting in 53 fewer annual deaths.** The 2005 'milestone' target mortality rate has not been achieved (actual 131 vs milestone 124). However, it is encouraging to note that after remaining on a plateau for 4-5 years, cancer deaths fell by 7% in year 2007. Nevertheless, compared to the 14% reduction achieved over the last 10 years a further 16% reduction (from 2005-07 average) would be required over the next four years to achieve the year 2010 target. On this basis, the long-term trend extrapolation suggests the year 2010 target may be underachieved.

The national rate for all cancer mortality among people under 75 fell by 18% in the period up to 2005-07 versus the Walsall reduction of 14% and therefore the Walsall inequalities gap has widened slightly, with the Walsall (persons) cancer mortality rate remaining 12% higher than the national average. (See pages 19-20 for charts and data and Appendix 2).

***Cancer mortality rates among the under 75s in Walsall have fallen more slowly than national rates for both men and women, with the result that the rate for Walsall men in 2005-07 was 17% higher and for Walsall women 6% higher than the national rate. Reducing the Walsall mortality rate for all cancers among the under 75s down to the national rate would save an additional 41 lives per year in Walsall.***

Appendix 3 highlights the wide variation in all cancer mortality rates across the West Midlands. The Walsall rate is 24% higher than in Herefordshire (which has the lowest rate in the West Midlands) but 7% below the rate in Sandwell (which has the highest rate in the region).

### 2.2.1 Lung Cancer

**The Walsall mortality rate for lung cancer in people under 75 fell by 22%**, marginally higher than the 21% reduction in the national rate over this period, resulting in 24 fewer annual deaths in Walsall. Nevertheless, the Walsall rate remained 13% higher than the national rate in 2005-07. The year 2005 'milestone' target has been marginally underachieved but the long-term trend extrapolation suggests that the 2010 target should be achieved. This will require a further reduction of 10% (persons) from the 2005-07 average rate.

**There remains a concern that the Walsall target may be achieved without a major reduction in the lung cancer mortality rate in women.** This is because all of the lung cancer progress in Walsall so far has been among men, where the Walsall mortality rate has fallen by 32% (although still 19% higher than the national rate). Among women in Walsall, the lung cancer mortality rate in 2005-07 was virtually unchanged from 1995-97 and was marginally higher than the 2005-07 average for England. This compares with a Walsall lung cancer mortality rate for women in 1995-97 that was marginally lower than the national rate. (See pages 21-22 for charts and data and Appendix 2).

### 2.2.2 Breast Cancer in Women of Screening Age

**The Walsall mortality rate for breast cancer in women of screening age 50-69 in 2005-07 was 13% lower than in 1995-97**, resulting in 3 fewer deaths per year. There is substantial year to year fluctuation in the number of deaths. From a ten year low of 11 deaths in 2004 there was a marked increase to 23 deaths in 2005 and 27 deaths in 2006. This was followed by a reduction to 15 deaths in 2007. The year 2005 'milestone' rate was achieved (helped by the exceptional low in 2004) and the long term trend extrapolation suggests that the year 2010 target should be achieved. This requires a further 11% reduction from the 2005-07 average. **The national rate has fallen faster than the Walsall rate since 1995-97 and consequently the Walsall inequalities gap has widened from 4% to 19% above the national rate.** (See pages 23-24 for charts and data and Appendix 2).

## 2.3 Mental health – Suicide rates

Throughout most of the 1990s the suicide rate in Walsall was well below the national average. There are **substantial year-to-year fluctuations** in the number of suicides ranging from a low of 13 deaths in 1998 to a ten year peak of 30 deaths in 2004. The number of suicides then fell back in 2005 and 2006 but increased to 18 deaths in 2007. **The long term trend remains upward.** The year 2005 'milestone' rate has not been achieved and the year 2010 target seems unlikely to be achieved. The latter would require a consistent reduction to no more than 13 deaths per year compared to an average of 18 deaths per year in 2005-07.

In 2005-07 the Walsall suicide rate was 16% higher than in 1995-97 but was nevertheless marginally lower than the national average. **Over the monitoring**

**period, the suicide rate among Walsall men increased by 28% but fell by 9% in Walsall women.** (See pages 25-26 for charts and data and Appendices 1 and 2)

Appendix 3 highlights the wide variation in the suicide rate across the West Midlands. The Walsall rate is over 30% higher than in Birmingham East and North (which has the lowest rate in the West Midlands) but the Walsall rate is 26% lower than in Wolverhampton (which has the highest rate in the region). However, it should be noted that the relatively small number of deaths in each area contributes to the wide variation in rates.

***The marginally lower Walsall suicide rate than nationally in 2005-07 means that there is about 1 fewer suicides per year in Walsall than would be expected if the Walsall rate was the same as the national rate.***

## **2.4 Accidents**

**The Walsall mortality rate from accidents was 29% lower in 2005-07 than in 1995-97, resulting in 11 fewer deaths per year.** This reflects a substantial reduction in accidental deaths in 2005 and 2006 and despite an increase in 2007. There are substantial year to year fluctuations and the mortality rate for 2005-07 (at 13.5) was still above the 2005 Milestone rate (12.30). The long term trend extrapolation suggests the year 2010 target (42% reduction from 1995-97) will not be achieved. The latter would require a further reduction (from 2005-07) of 18% in the Walsall accident mortality rate.

The inequalities gap between Walsall and the national rate has been reversed since 1995-97: in 2005-07 the Walsall mortality rate was 15% lower than the national rate compared to 20% higher in 1995-97. **The greatest progress in Walsall has been in reducing accidental deaths among women, which have been cut by half, resulting in the Walsall mortality rate falling 30% below the national rate.** (Since 1995-97, the national accidental death mortality rate for women has increased by 4%.) For men also the reduction in accidental deaths in Walsall (17%) has far exceeded the national reduction (1.5%) and the Walsall mortality rate is 8% below the national rate.

Appendix 3 highlights the wide variation in accident mortality rates across the West Midlands. **The Walsall rate was the lowest in the West Midlands in 2005-07** and more than 40% lower than the rate in Heart of Birmingham (which has the highest accident mortality rate in the region).

For several years up to 2004 there was a rising trend in deaths from accidents among the over 65s. There was concern in this regard in relation to **deaths from accidental falls**. The Walsall mortality rate for deaths from accidental falls rose progressively from 1998 to a peak in 2003 when it was 3 times the national average. These deaths have subsequently reduced substantially each year. **Among 65-74 year olds the Walsall mortality rate from accidental falls in 2005-07 was 30% below the national rate and for the over 75s the Walsall rate was over 40% less than the national rate.** It is likely that the Walsall Falls Prevention Programme has contributed significantly to these results. (See pages 27-28 for charts and data and Appendix 2.)

### 3. SAVING LIVES – CORONARY HEART DISEASE, STROKE AND RELATED CONDITIONS (All circulatory diseases)

#### National Target

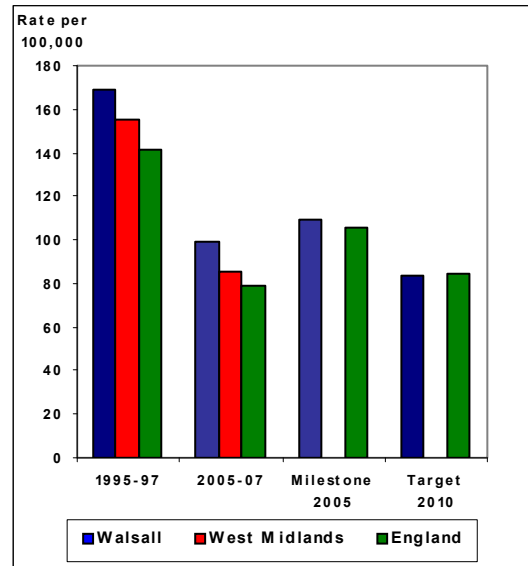
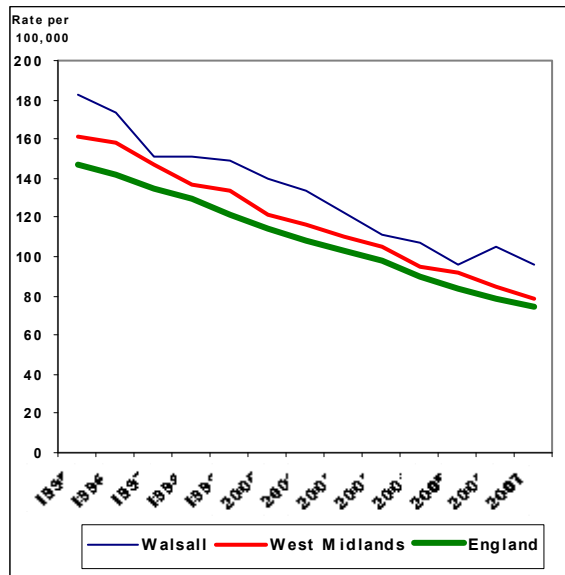
To reduce the death rate in people under 75 by at least 40% by 2010 (Milestone: 25% reduction by 2005).

#### WALSALL'S LDP ('SPEARHEAD') TARGET

BY YEAR	% REDUCTION	RATE (PER 100000)	ANNUAL LIVES SAVED
2005	35.6	108.9	175
2010	50.7	83.4	249

### OUR HEALTHIER NATION

#### Age Standardised Mortality Rates from All Circulatory Diseases Persons Aged Under 75



Source: Compendium of Clinical and Health Indicators Dec 2008

### Deaths from all circulatory diseases in persons under 75 (ICD-10, I00-I99)

	1995	1996	1997	1998	1999	2000	2001	2002	2003	2004	2005	2006	2007
<b>Number of Deaths in Walsall</b>	<b>526</b>	<b>506</b>	<b>443</b>	<b>434</b>	<b>432</b>	<b>405</b>	<b>385</b>	<b>355</b>	<b>322</b>	<b>307</b>	<b>277</b>	<b>299</b>	<b>270</b>

### Age Standardised Mortality Rate per 100,000 Population Aged Under 75 Years

		1995-97 (Baseline)	2005-07	Cumulative % Reduction	Progress: Annual Lives Saved
<b>Persons</b>	<b>Walsall</b>	<b>169.2</b>	<b>98.8</b>	<b>-41.6</b>	<b>209</b>
	<b>West Midlands</b>	<b>155.4</b>	<b>85.0</b>	<b>-45.3</b>	
	<b>England</b>	<b>141.3</b>	<b>79.1</b>	<b>-44.0</b>	
<b>Males</b>	<b>Walsall</b>	<b>237.3</b>	<b>145.0</b>	<b>-38.9</b>	<b>126</b>
	<b>West Midlands</b>	<b>216.8</b>	<b>120.8</b>	<b>-44.2</b>	
	<b>England</b>	<b>198.3</b>	<b>111.2</b>	<b>-43.9</b>	
<b>Females</b>	<b>Walsall</b>	<b>105.8</b>	<b>55.2</b>	<b>-47.8</b>	<b>83</b>
	<b>West Midlands</b>	<b>98.6</b>	<b>51.1</b>	<b>-48.2</b>	
	<b>England</b>	<b>89.6</b>	<b>49.0</b>	<b>-45.3</b>	

Note: Male + Female 'lives saved' may not add to Persons 'lives saved' due to rounding

Sections 3.1 to 3.4 below indicate progress against local targets for coronary heart disease and stroke, for under 65s and ages 65 – 74. These are key components of the 'all circulatory disease' target.

### 3.1 CORONARY HEART DISEASE – PERSONS UNDER 65

#### National Target

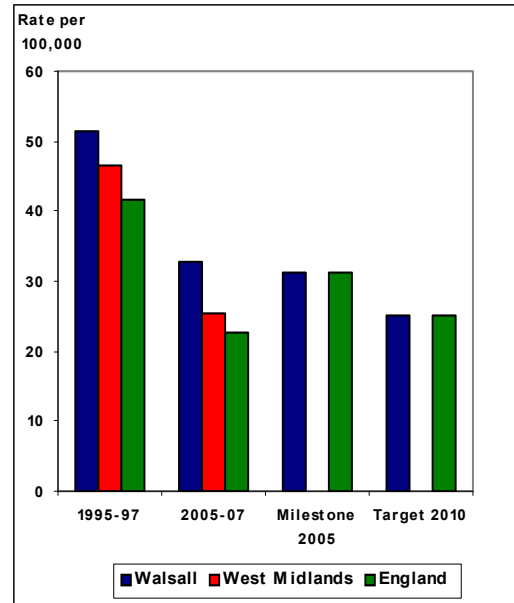
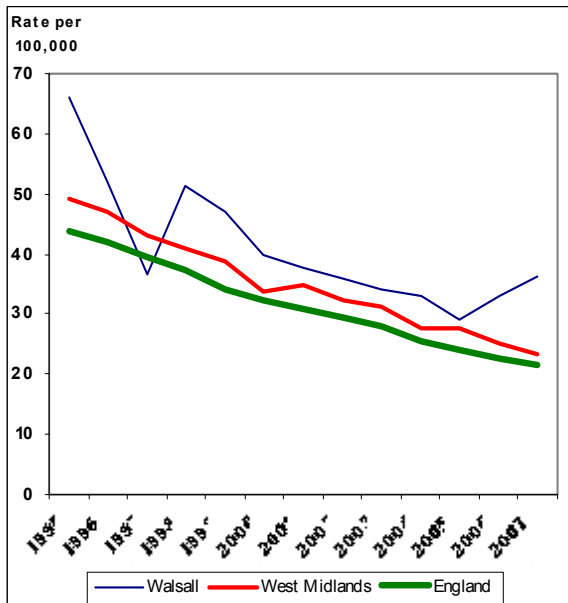
To reduce the death rate by at least 40% by 2010  
 Milestone: 25% reduction by 2005

#### WALSALL'S TARGET

BY YEAR	% REDUCTION	RATE (PER 100000)	ANNUAL LIVES SAVED
2005	39.2	31.3	46
2010	51.4	25.0	60

### OUR HEALTHIER NATION

#### Age Standardised Mortality Rates – CHD Persons Aged Under 65



Source: Compendium of Clinical and Health Indicators Dec 2008

**Deaths from coronary heart disease in persons under 65 (ICD10 I20-125, ICD9 410-414 adjusted)**

	1995	1996	1997	1998	1999	2000	2001	2002	2003	2004	2005	2006	2007
<b>Number of Deaths in Walsall</b>	150	117	83	118	108	89	85	81	78	75	66	76	82

**Age Standardised Mortality Rate per 100,000 Population Aged Under 65 Years**

		1995-97 (Baseline)	2005-07	Cumulative Progress: % Reduction Annual Lives Saved	
<b>Persons</b>	<b>Walsall</b>	51.5	32.9	-36.1	42
	<b>West Midlands</b>	46.4	25.3	-45.5	
	<b>England</b>	41.7	22.7	-45.6	
<b>Male</b>	<b>Walsall</b>	82.2	53.7	-34.7	32
	<b>West Midlands</b>	73.0	41.4	-43.3	
	<b>England</b>	66.4	37.1	-44.1	
<b>Female</b>	<b>Walsall</b>	21.1	12.6	-40.3	10
	<b>West Midlands</b>	19.9	9.5	-52.3	
	<b>England</b>	17.5	8.8	-49.7	

Note: Male + Female 'lives saved' may not add to Persons 'lives saved' due to rounding

### 3.2 CORONARY HEART DISEASE – PERSONS AGED 65 – 74

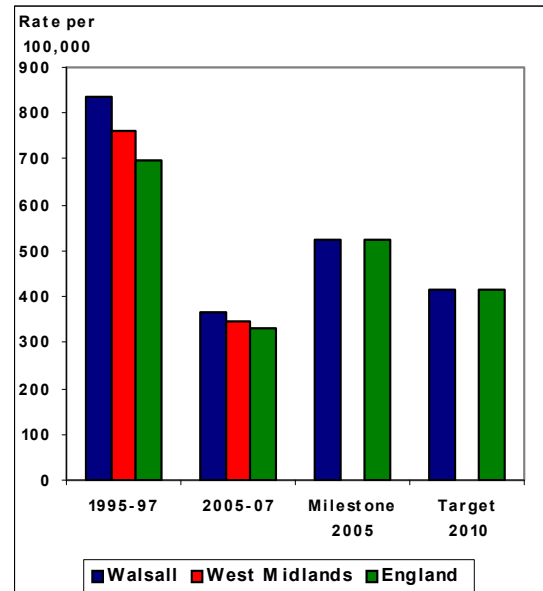
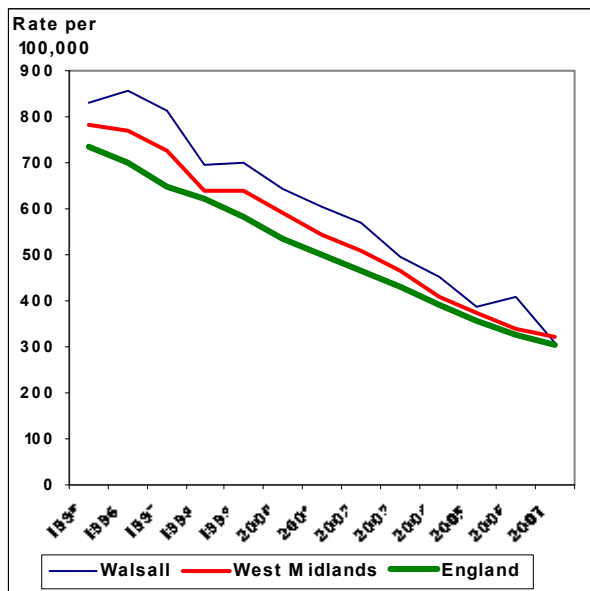
#### National Target

To reduce the death rate by at least 40% by 2010  
 Milestone: 25% reduction by 2005

WALSALL'S TARGET			
BY YEAR	% REDUCTION	RATE (PER 100000)	ANNUAL LIVES SAVED
2005	-37.7	522.0	75
2010	-50.1	417.7	99

### OUR HEALTHIER NATION

#### Age Standardised Mortality Rates – CHD Persons Aged 65-74



Source: Compendium of Clinical and Health Indicators Dec 2008

**Deaths from coronary heart disease in persons aged 65-74 (ICD10 I20-I25, ICD9 410-414 adjusted)**

	1995	1996	1997	1998	1999	2000	2001	2002	2003	2004	2005	2006	2007
<b>Number of Deaths in Walsall</b>	198	205	192	164	166	153	142	134	118	108	93	99	73

**Age Standardised Mortality Rate per 100,000 Population Aged Between 65-74 Years**

		1995-97 (Baseline)	2005-07	Cumulative % Reduction	Progress: Annual Lives Saved
<b>Persons</b>	<b>Walsall</b>	837.4	367.1	-56.2	109
	<b>West Midlands</b>	759.2	344.9	-54.6	
	<b>England</b>	696.1	329.0	-52.7	
<b>Males</b>	<b>Walsall</b>	1192.8	544.9	-54.3	68
	<b>West Midlands</b>	1093.8	510.8	-53.3	
	<b>England</b>	1012.9	484.9	-52.1	
<b>Females</b>	<b>Walsall</b>	530.7	208.3	-60.7	41
	<b>West Midlands</b>	471.5	194.6	-58.7	
	<b>England</b>	429.4	188.7	-56.1	

Note: Male + Female 'lives saved' may not add to Persons 'lives saved' due to rounding

### 3.3 STROKE – PERSONS UNDER 65

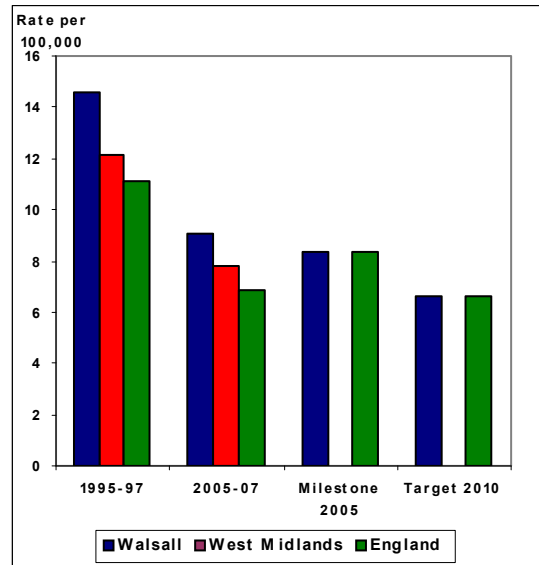
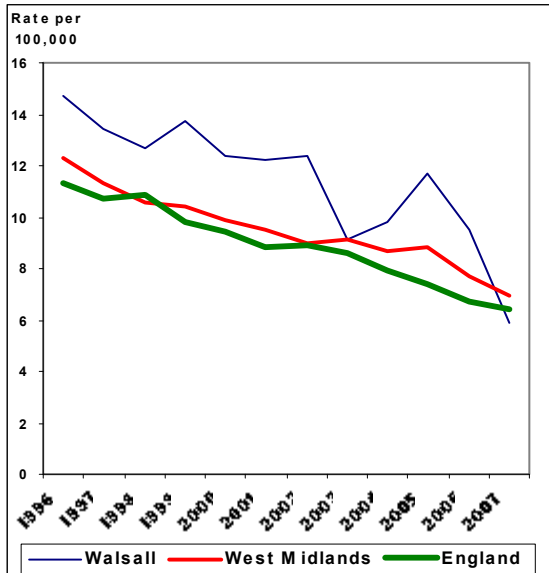
#### National Target

To reduce the death rate by at least 40% by 2010  
 Milestone: 25% reduction by 2005

WALSALL'S TARGET			
BY YEAR	% REDUCTION	RATE (PER 100000)	ANNUAL LIVES SAVED
2005	43.1	8.32	14
2010	54.2	6.66	18

### OUR HEALTHIER NATION

#### Age Standardised Mortality Rates – Stroke Persons Aged Under 65



Source: Compendium of Clinical and Health Indicators Dec 2008

**Deaths from stroke in persons aged under 65 (ICD10 I60-I69, ICD9 430-438 adjusted)**

	1995	1996	1997	1998	1999	2000	2001	2002	2003	2004	2005	2006	2007
<b>Number of Deaths in Walsall</b>	36	33	30	30	31	29	27	28	21	23	26	21	13

**Age Standardised Mortality Rate per 100,000 Population Aged Under 65 Years**

		1995-97 (Baseline)	2005-07	Cumulative % Reduction	Progress: Annual Lives Saved
<b>Persons</b>	<b>Walsall</b>	<b>14.62</b>	<b>9.03</b>	<b>-38.2</b>	<b>13</b>
	<b>West Midlands</b>	<b>12.1</b>	<b>7.82</b>	<b>-35.4</b>	
	<b>England</b>	<b>11.1</b>	<b>6.85</b>	<b>-38.3</b>	
<b>Males</b>	<b>Walsall</b>	<b>17.84</b>	<b>12.48</b>	<b>-30.0</b>	<b>6</b>
	<b>West Midlands</b>	<b>13.84</b>	<b>9.12</b>	<b>-34.1</b>	
	<b>England</b>	<b>12.73</b>	<b>7.73</b>	<b>-39.3</b>	
<b>Females</b>	<b>Walsall</b>	<b>11.42</b>	<b>5.60</b>	<b>-51.0</b>	<b>7</b>
	<b>West Midlands</b>	<b>10.37</b>	<b>6.53</b>	<b>-37.0</b>	
	<b>England</b>	<b>9.58</b>	<b>6.00</b>	<b>-37.4</b>	

Note: Male + Female 'lives saved' may not add to Persons 'lives saved' due to rounding

### 3.4 STROKE – PERSONS AGED 65-74

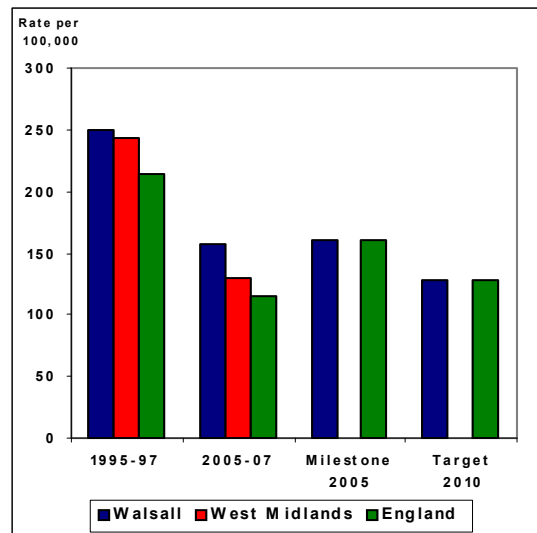
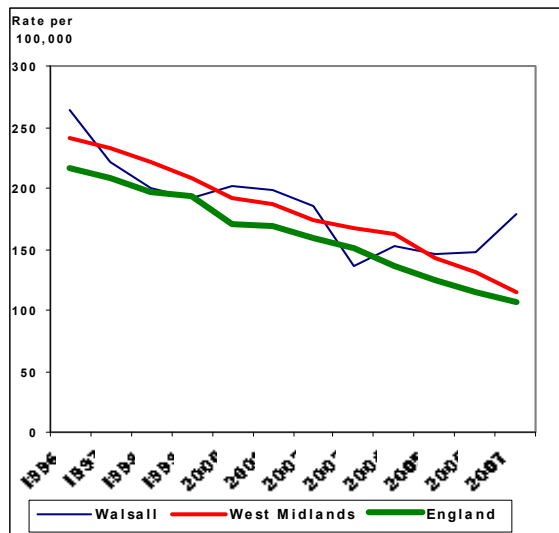
#### National Target

To reduce the death rate by at least 40% by 2010  
 Milestone: 25% reduction by 2005

WALSALL'S TARGET			
BY YEAR	% REDUCTION	RATE (PER 100000)	ANNUAL LIVES SAVED
2005	35.7	161.0	21
2010	48.5	128.8	29

### OUR HEALTHIER NATION

#### Age Standardised Mortality Rates – Stroke Persons Aged 65-74



Source: Compendium of Clinical and Health Indicators Dec 2008

**Deaths from stroke in persons aged 65-74 (ICD10 I60-I69, ICD9 430-438 adjusted)**

	1995	1996	1997	1998	1999	2000	2001	2002	2003	2004	2005	2006	2007
<b>Number of Deaths in Walsall</b>	63	64	53	48	46	48	47	44	33	37	35	35	42

**Age Standardised Mortality Rate per 100,000 Population Aged 65-74 Years**

		1995-97 (Baseline)	2005-07	Cumulative Progress: % Reduction      Annual Lives Saved	
<b>Persons</b>	<b>Walsall</b>	250.2	157.3	-37.1	23
	<b>West Midlands</b>	243.2	130.1	-46.5	
	<b>England</b>	214.6	115.2	-46.3	
<b>Males</b>	<b>Walsall</b>	277.6	199.0	-28.3	8
	<b>West Midlands</b>	288.7	154.8	-46.4	
	<b>England</b>	250.5	132.4	-47.1	
<b>Females</b>	<b>Walsall</b>	225.2	119.4	-47.0	15
	<b>West Midlands</b>	204.3	107.9	-47.2	
	<b>England</b>	184.5	99.7	-46.0	

Note: Male + Female 'lives saved' may not add to Persons 'lives saved' due to rounding

#### 4. SAVING LIVES – CANCER

##### National Target

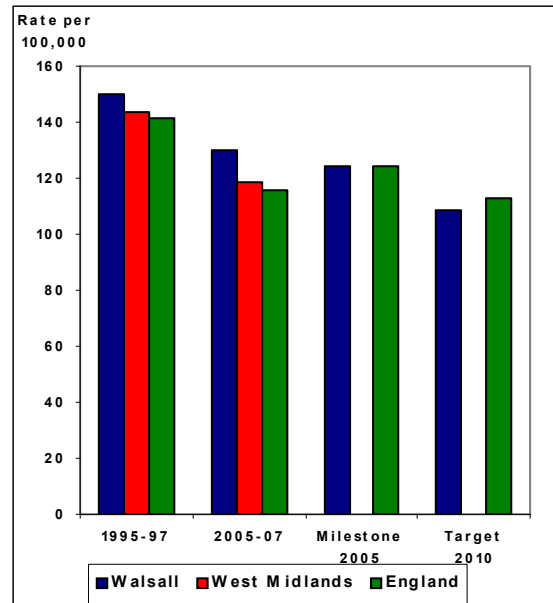
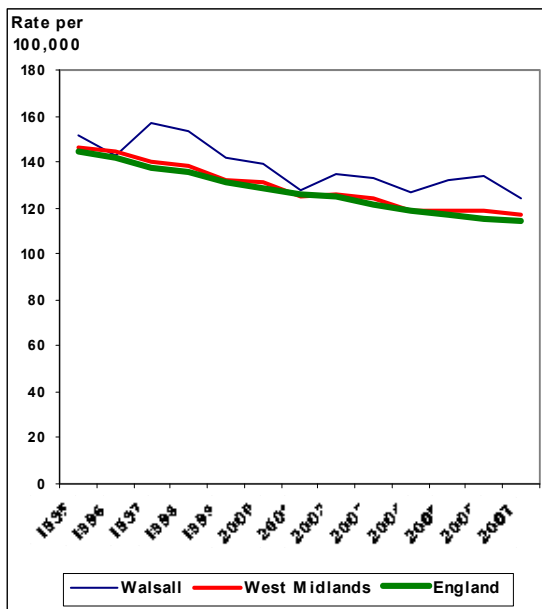
To reduce the death rate in people under 75 by at least 20% by 2010  
 Milestone: 12% reduction by 2005

##### WALSALL'S LDP ('SPEARHEAD') TARGET

BY YEAR	% REDUCTION	RATE (PER 100000)	ANNUAL LIVES SAVED
2005	-17.5	124.0	74
2010	-27.5	108.9	115

### OUR HEALTHIER NATION

#### Age Standardised Mortality Rates from All Cancers Persons Aged Under 75



Source: Compendium of Clinical and Health Indicators Dec 2008

### Deaths from cancer in persons aged under 75 (ICD10 C00-C97)

	1995	1996	1997	1998	1999	2000	2001	2002	2003	2004	2005	2006	2007
<b>Number of Deaths in Walsall</b>	424	399	441	429	401	395	358	375	378	358	377	379	349

### Age Standardised Mortality Rate per 100,000 Population Aged Under 75 Years

		1995-97 (Baseline)	2005-07	Cumulative % Reduction	Progress: Annual Lives Saved
<b>Persons</b>	<b>Walsall</b>	<b>150.3</b>	<b>129.9</b>	<b>-13.6</b>	<b>53</b>
	<b>West Midlands</b>	<b>143.4</b>	<b>118.5</b>	<b>-17.4</b>	
	<b>England</b>	<b>141.2</b>	<b>115.5</b>	<b>-18.2</b>	
<b>Males</b>	<b>Walsall</b>	<b>179.0</b>	<b>150.7</b>	<b>-15.8</b>	<b>34</b>
	<b>West Midlands</b>	<b>164.3</b>	<b>134.0</b>	<b>-18.4</b>	
	<b>England</b>	<b>160.8</b>	<b>128.2</b>	<b>-20.3</b>	
<b>Females</b>	<b>Walsall</b>	<b>124.9</b>	<b>110.9</b>	<b>-11.2</b>	<b>19</b>
	<b>West Midlands</b>	<b>125.2</b>	<b>104.3</b>	<b>-16.7</b>	
	<b>England</b>	<b>124.5</b>	<b>103.9</b>	<b>-16.5</b>	

Note: Male + Female 'lives saved' may not add to Persons 'lives saved' due to rounding

Sections 4.1 to 4.2 below indicate progress against local targets for reducing deaths from lung cancer in persons under 75, and breast cancer in women aged 50-69.

## 4.1 LUNG CANCER – PERSONS UNDER 75

### National Target

To reduce the death rate from lung cancer in people under 75 by 20% by 2010

Milestone: 12% reduction by 2005

WALSALL'S TARGET (PERSONS)			
BY YEAR	% REDUCTION	RATE (PER 100000)	ANNUAL LIVES SAVED
2005	-23.1	29.7	25
2010	-30.1	27.0	33

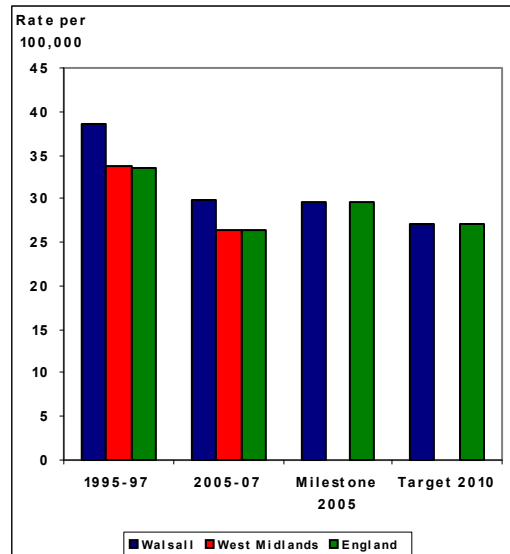
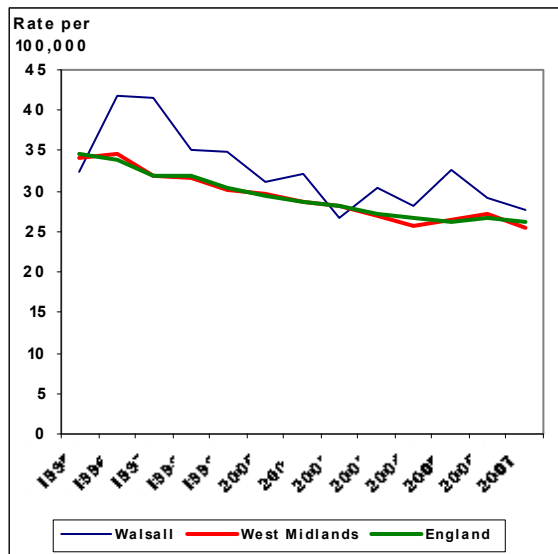
Walsall targets by gender are:

**Males:** reduce the death rate from lung cancer in under 75s by 34.5% by 2010 (to 37.1 per 100,000).

**Females:** reduce the death rate from lung cancer in under 75s by 19% by year 2010 (to 17.8 per 100,000).

## OUR HEALTHIER NATION

### Age Standardised Mortality Rates from Lung Cancer Persons Aged Under 75



Source: Compendium of Clinical and Health Indicators Dec 2008

**Deaths from lung cancer in persons aged under 75 (ICD10 C33-34, ICD9 162 adjusted)**

	1995	1996	1997	1998	1999	2000	2001	2002	2003	2004	2005	2006	2007
<b>Number of Deaths in Walsall</b>	95	116	118	101	101	90	92	77	86	82	94	85	78

**Age Standardised Mortality Rate per 100,000 Population Aged Under 75 Years**

		1995-97 (Baseline)	2005-07	Cumulative % Reduction	Progress: Annual Lives Saved
<b>Persons</b>	<b>Walsall</b>	38.6	29.9	-22.5	24
	<b>West Midlands</b>	33.7	26.3	-22.0	
	<b>England</b>	33.6	26.4	-21.4	
<b>Males</b>	<b>Walsall</b>	56.8	38.7	-31.9	24
	<b>West Midlands</b>	47.8	33.8	-29.3	
	<b>England</b>	46.3	32.5	-29.8	
<b>Females</b>	<b>Walsall</b>	21.8	21.7	-0.5	-
	<b>West Midlands</b>	20.7	19.2	-7.2	
	<b>England</b>	22.3	20.8	-6.7	

Note: Male + Female 'lives saved' may not add to Persons 'lives saved' due to rounding

## 4.2 BREAST CANCER – FEMALES AGED 50 - 69

### National Target

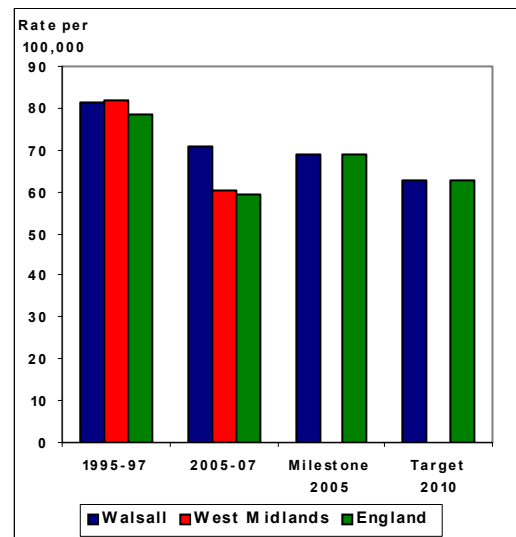
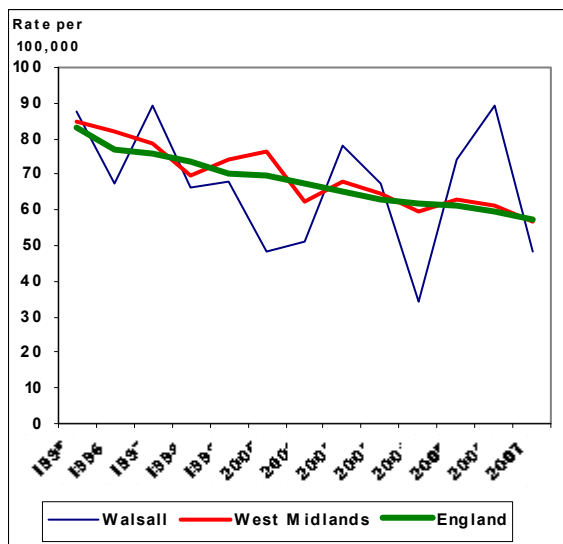
To reduce the death rate from breast cancer in women aged 50-69 by 20% by 2010

Milestone: 12% reduction by 2005

WALSALL'S TARGET			
BY YEAR	% REDUCTION	RATE (PER 100000)	ANNUAL LIVES SAVED
2005	-15.2	69.1	4
2010	-22.9	62.8	6

### OUR HEALTHIER NATION

#### Age Standardised Mortality Rates from Breast Cancer Females Aged 50 – 69



Source: Compendium of Clinical and Health Indicators Dec 2008

**Deaths from breast cancer in women aged 50-69 (ICD10 C50 ICD9 174 adjusted)**

	1995	1996	1997	1998	1999	2000	2001	2002	2003	2004	2005	2006	2007
<b>Number of Deaths in Walsall</b>	27	20	27	20	20	14	15	23	21	11	23	27	15

**Age Standardised Mortality Rate per 100,000 in Female Population Aged 50-69 Years**

		1995-97 (Baseline)	2005-07	Cumulative % Reduction	Progress: Annual Lives Saved
<b>Females</b>	<b>Walsall</b>	81.5	70.8	-13.1	3
	<b>West Midlands</b>	81.8	60.1	-26.5	
	<b>England</b>	78.5	59.4	-24.3	

## 5. SAVING LIVES – MENTAL HEALTH

### National Target

To reduce the death rate from suicide and undetermined injury in people of all ages by at least 20% by 2010

Milestone: 12% reduction by 2005

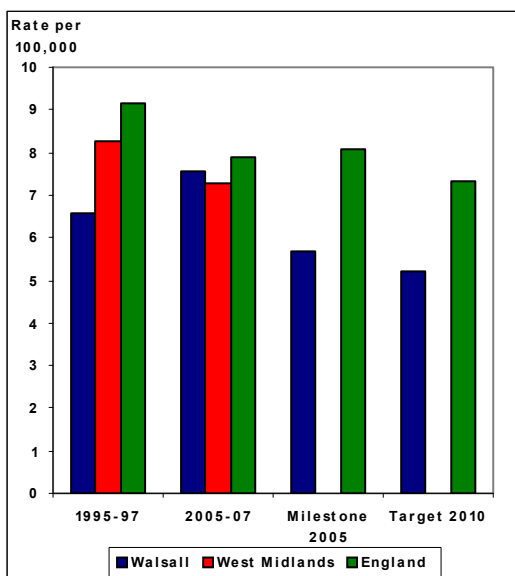
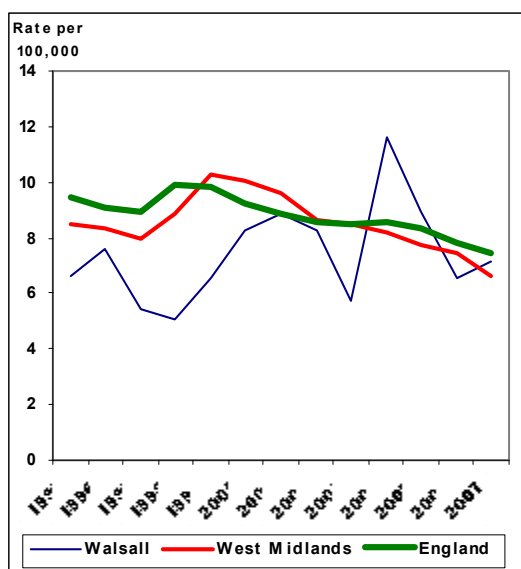
This headline target is used as a crude proxy for mental health.

In the 1995-97 baseline period, Walsall's mortality rate was well below the regional and national average and was already below the national target rate for 2010. The Walsall target (in the table below) was therefore set to achieve a further 20% reduction by 2010. (The LDP / Spearhead target for Walsall, set by the Birmingham and Black Country Strategic Health Authority, took into account the higher mortality rates in 2001/02 and set a less demanding rate of 7.3 per 100000 by 2010. However, for Walsall this would imply a *higher* suicide rate than in the Our Healthier Nation baseline period of 1995-97.)

WALSALL'S TARGET			
BY YEAR	% REDUCTION	RATE (PER 100000)	ANNUAL LIVES SAVED
2005	-12.0	5.7	2
2010	-20.0	5.2	3

## OUR HEALTHIER NATION

### Age Standardised Mortality Rates from Suicide and Undetermined Injury Persons All Ages



Source: Compendium of Clinical and Health indicators Dec 2008

**Deaths from suicide and undetermined injury, all ages (ICD10 X60-X84, Y10-Y34 exc Y33.9; ICD9 E950-95 and E980-989 excluding E988.8)**

	1995	1996	1997	1998	1999	2000	2001	2002	2003	2004	2005	2006	2007
<b>Number of Deaths in Walsall</b>	18	20	14	13	16	21	22	20	14	30	22	16	18

**Age Standardised Mortality Rate per 100,000 Population, All Ages**

		1995-97 (Baseline)	2005-07	Cumulative % Reduction	Progress: Annual Lives Saved
<b>Persons</b>	<b>Walsall</b>	<b>6.55</b>	<b>7.58</b>	<b>+15.7</b>	<b>+1*</b>
	<b>West Midlands</b>	<b>8.26</b>	<b>7.29</b>	<b>-11.7</b>	
	<b>England</b>	<b>9.16</b>	<b>7.89</b>	<b>-13.9</b>	
<b>Males</b>	<b>Walsall</b>	<b>8.66</b>	<b>11.05</b>	<b>+27.6</b>	<b>+3*</b>
	<b>West Midlands</b>	<b>12.76</b>	<b>11.01</b>	<b>-13.7</b>	
	<b>England</b>	<b>14.10</b>	<b>12.09</b>	<b>-14.3</b>	
<b>Females</b>	<b>Walsall</b>	<b>4.60</b>	<b>4.19</b>	<b>-8.9</b>	<b>1</b>
	<b>West Midlands</b>	<b>3.90</b>	<b>3.65</b>	<b>-6.4</b>	
	<b>England</b>	<b>4.47</b>	<b>3.84</b>	<b>-14.1</b>	

Note: Male + Female 'lives saved' may not add to Persons 'lives saved' due to rounding

\* increase in deaths

## 6. SAVING LIVES – ACCIDENTS

### 6.1 Mortality Target for Accidents

#### National Target

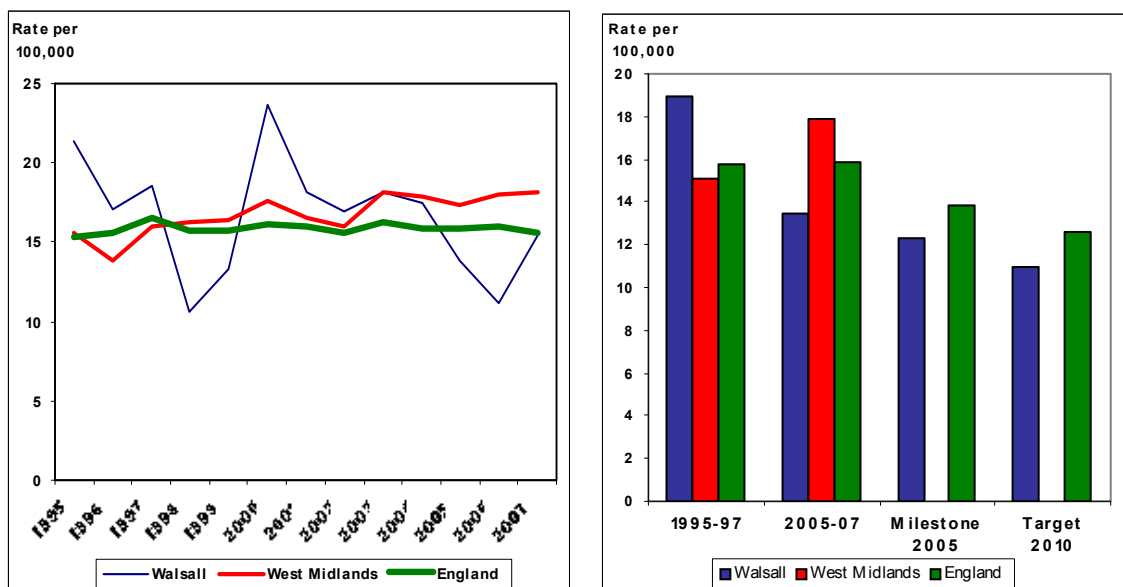
To reduce the death rate from accidents by at least 20% by 2010  
 Milestone: 12% reduction by 2005

A complication in setting a local target was that there had been a notable peak in Walsall deaths from accidents in 1995 followed by a sustained substantial decrease from this peak in subsequent years to 1999. This meant that the national target % reduction from 1995-97 baseline had already been achieved in Walsall by 1997-99. The Walsall target for 2010 was therefore set as a further 20% reduction in deaths from 1997-99 average, equivalent to a 41.7% reduction from the 1995-97 OHN baseline period.

WALSALL'S TARGET			
BY YEAR	% REDUCTION	RATE (PER 100000)	ANNUAL LIVES SAVED
2005	-35.0	12.3	20
2010	-41.7	11.0	24

## OUR HEALTHIER NATION

### Age Standardised Mortality Rates for Accidents Persons All Ages



Source: Compendium of Clinical and Health Indicators Dec 2008

**Number of Deaths from Accidents (ICD10 V01-X59, ICD9 E800-928, excl E870-E879)**

	1995	1996	1997	1998	1999	2000	2001	2002	2003	2004	2005	2006	2007
<b>Number of Deaths in Walsall</b>													
<b>Under 65</b>	27	21	27	14	19	39	30	22	20	20	23	12	21
<b>Over 65</b>	35	33	29	21	22	31	21	30	43	40	21	27	33
<b>Total</b>	62	54	56	35	41	70	51	52	63	60	44	39	54

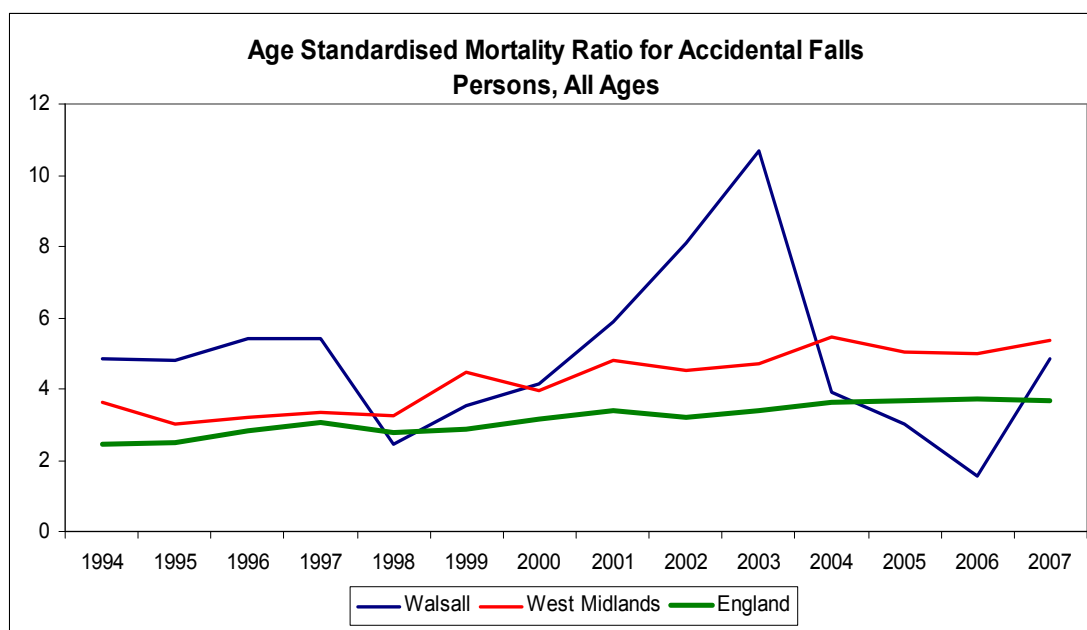
**Age Standardised Mortality Rate per 100,000 Population, All Ages**

		1995-97 (Baseline)	2005-07	Cumulative % Reduction	Progress: Annual Lives Saved
<b>Persons</b>	<b>Walsall</b>	18.97	13.5	-28.8	11
	<b>West Midlands</b>	15.14	17.84	+17.8	
	<b>England</b>	15.77	15.82	+0.3	
<b>Males</b>	<b>Walsall</b>	23.93	19.79	-17.3	1
	<b>West Midlands</b>	20.76	23.75	+14.4	
	<b>England</b>	21.75	21.42	-1.5	
<b>Females</b>	<b>Walsall</b>	14.39	7.17	-50.2	10
	<b>West Midlands</b>	9.59	11.89	+24.0	
	<b>England</b>	9.94	10.3	+3.6	

Note: Male + Female 'lives saved' may not add to Persons 'lives saved' due to rounding

## 6.2 Mortality from Accidental Falls

Deaths from accidental falls in Walsall have shown substantial year to year fluctuations. In the last decade a peak was reached in 2003, when these deaths rose to 43. However, these deaths have reduced substantially since reaching a low of 6 deaths in 2006 but rising to 17 in 2007. The standardised mortality ratio for accidental falls over the period 1994-2007 is illustrated below. The West Midlands regional rate and the national rate both show a trend increase over the last decade. However, in Walsall the mortality rate was below both the West Midlands average and the national rate in 2005 and 2006 and also remained below the regional rate in 2007. It is likely that the Walsall Falls Prevention Programme has contributed significantly to recent reductions.



In 2005-07, Walsall mortality rates from accidental falls among older age groups were substantially below regional and national averages.

### Age specific mortality rates per 100,000 population for accidental falls 2005-2007 (ICD10 W00-W19)

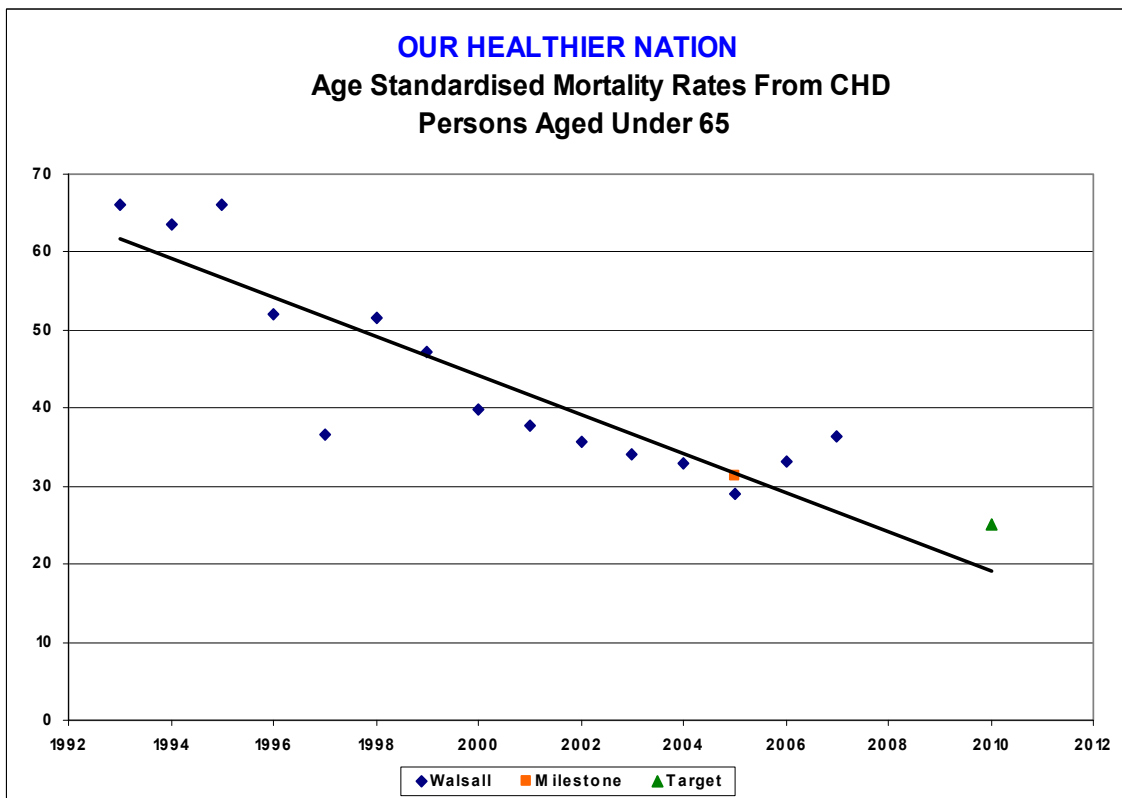
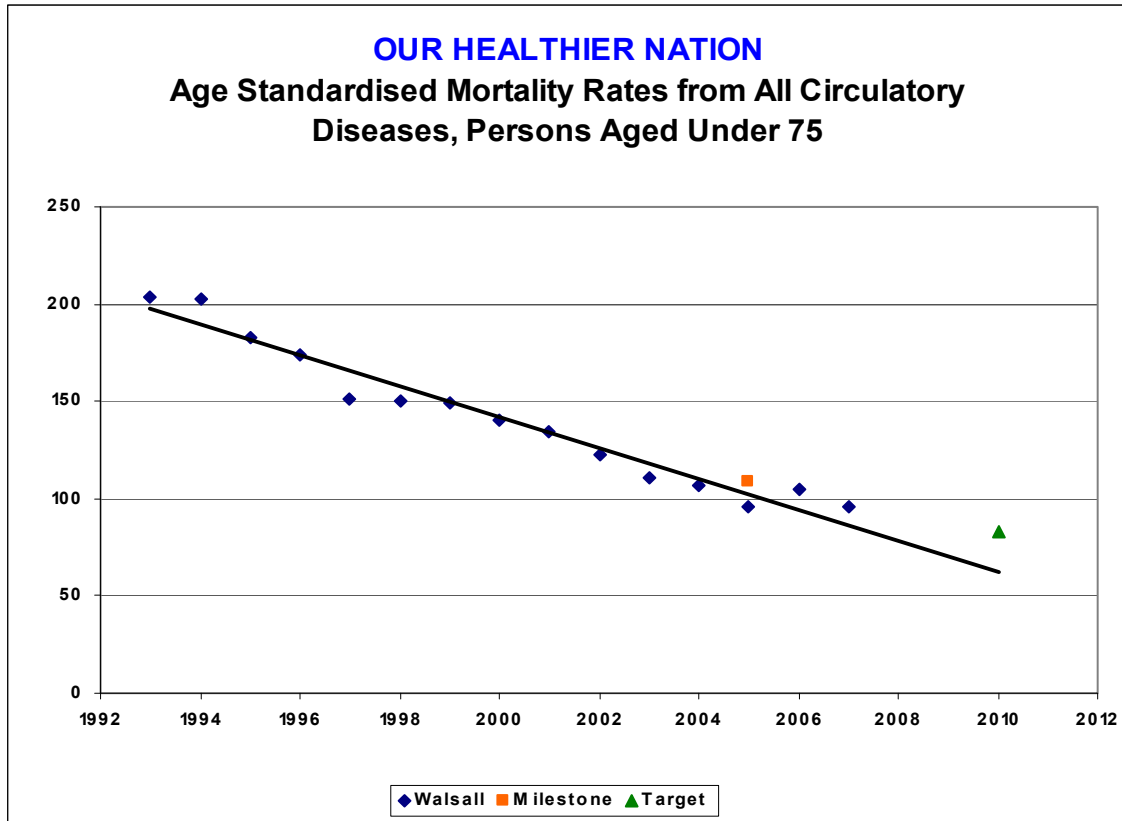
	Age Group		
	All ages	65-74 yrs	75+
<b>Walsall</b>	<b>3.13</b>	<b>5.7</b>	<b>28.8</b>
<b>West Midlands</b>	<b>5.14</b>	<b>12.6</b>	<b>77.6</b>
<b>England</b>	<b>3.69</b>	<b>8.4</b>	<b>51.1</b>

Source: Compendium of Clinical and Health Indicators Dec 2008

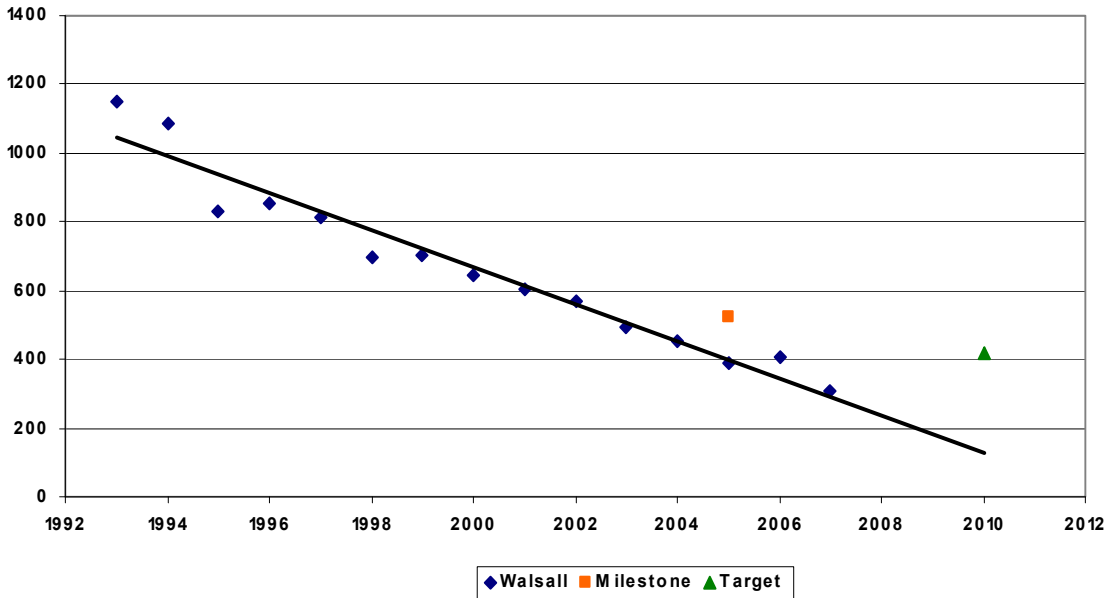
## **APPENDIX 1**

### **WALSALL MONITORING DATA FROM 1993 TO 2007 AND LINEAR EXTRAPOLATION TO 2010**

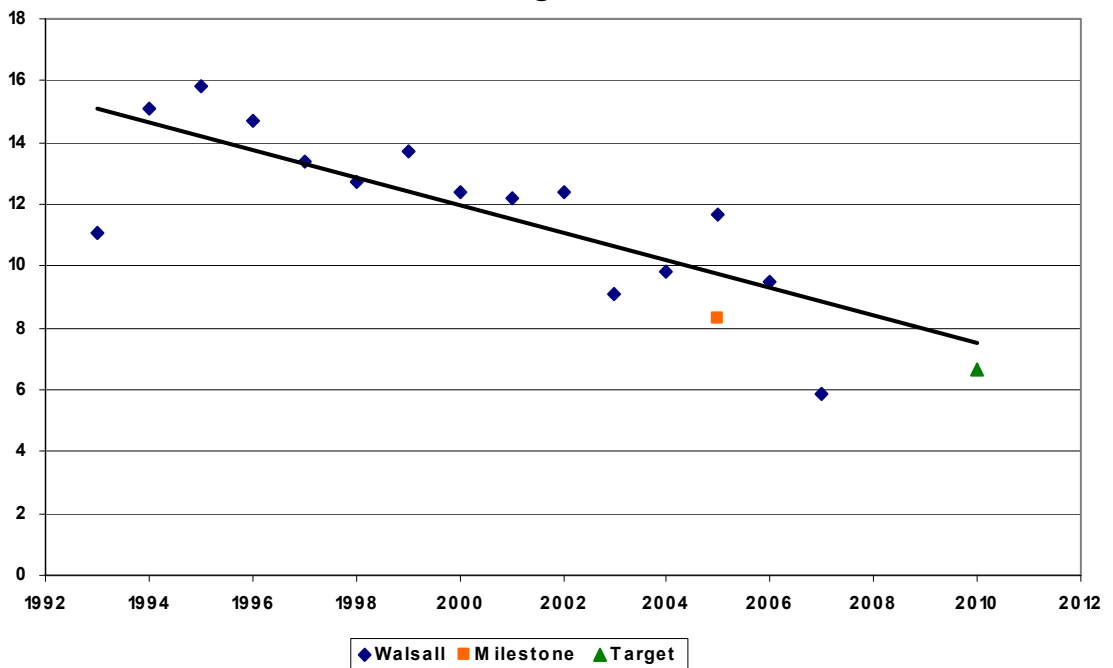
All rates displayed in the charts below are per 100,000 population



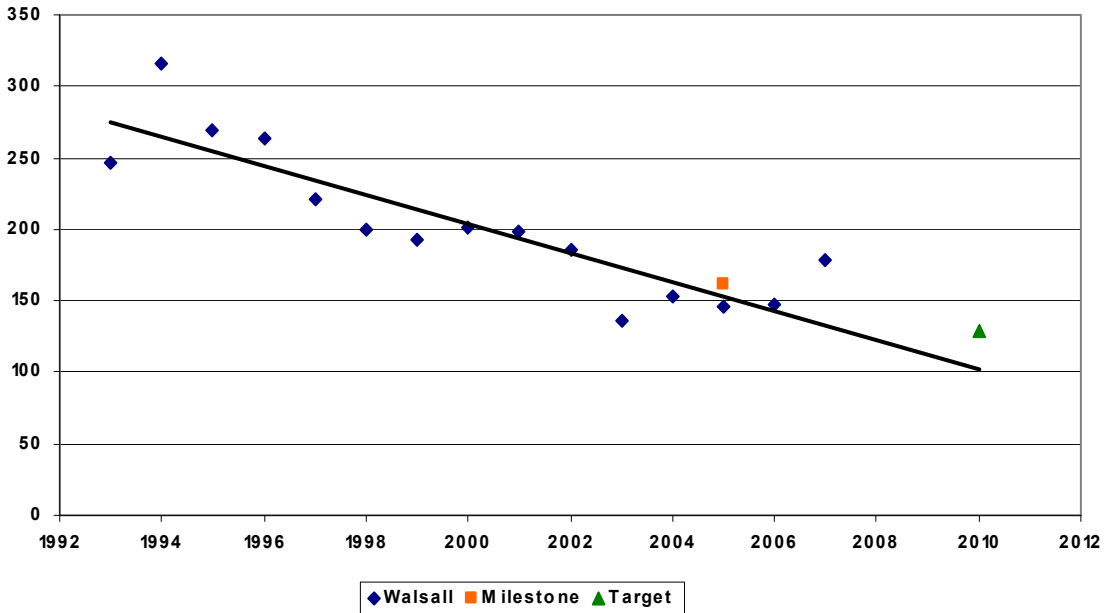
**OUR HEALTHIER NATION**  
**Age Standardised Mortality Rates from CHD**  
**Persons Aged 65-74**



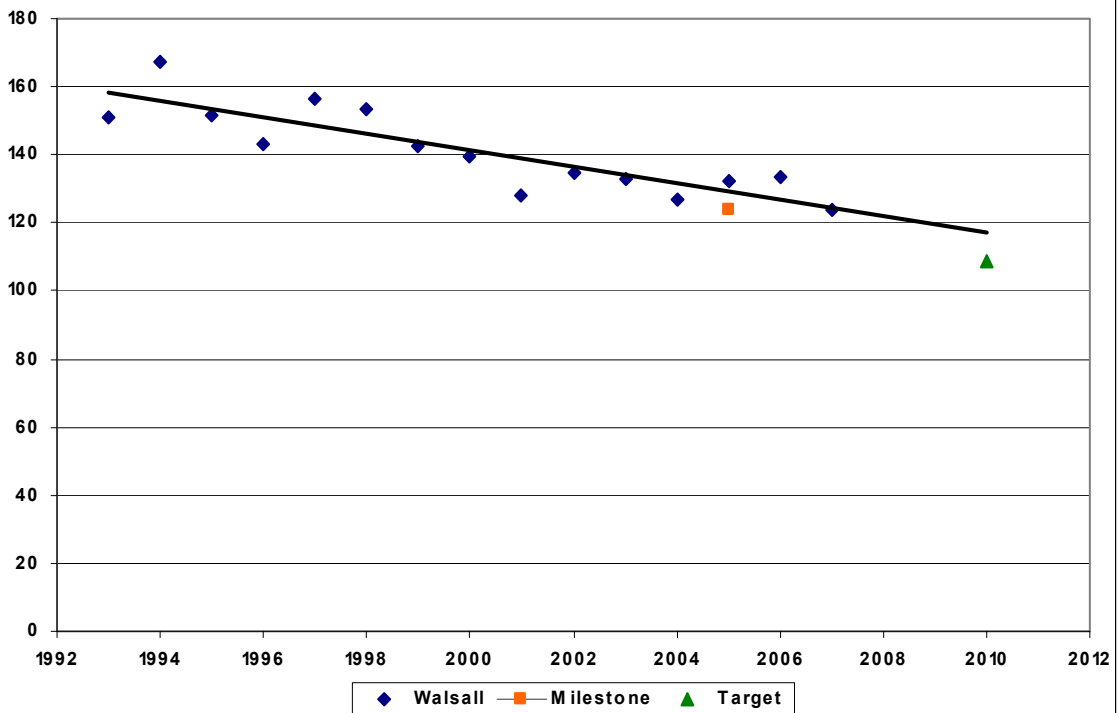
**OUR HEALTHIER NATION**  
**Age Standardised Mortality Rates from Stroke**  
**Persons Aged Under 65**

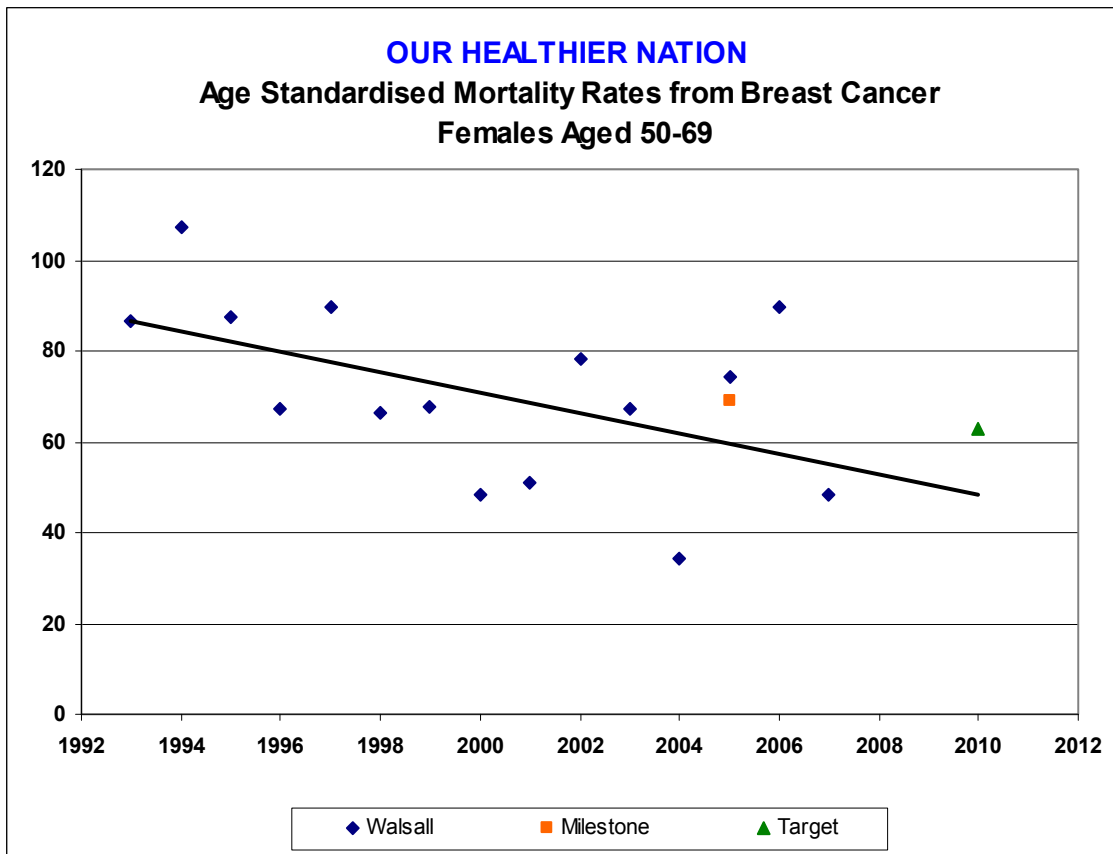
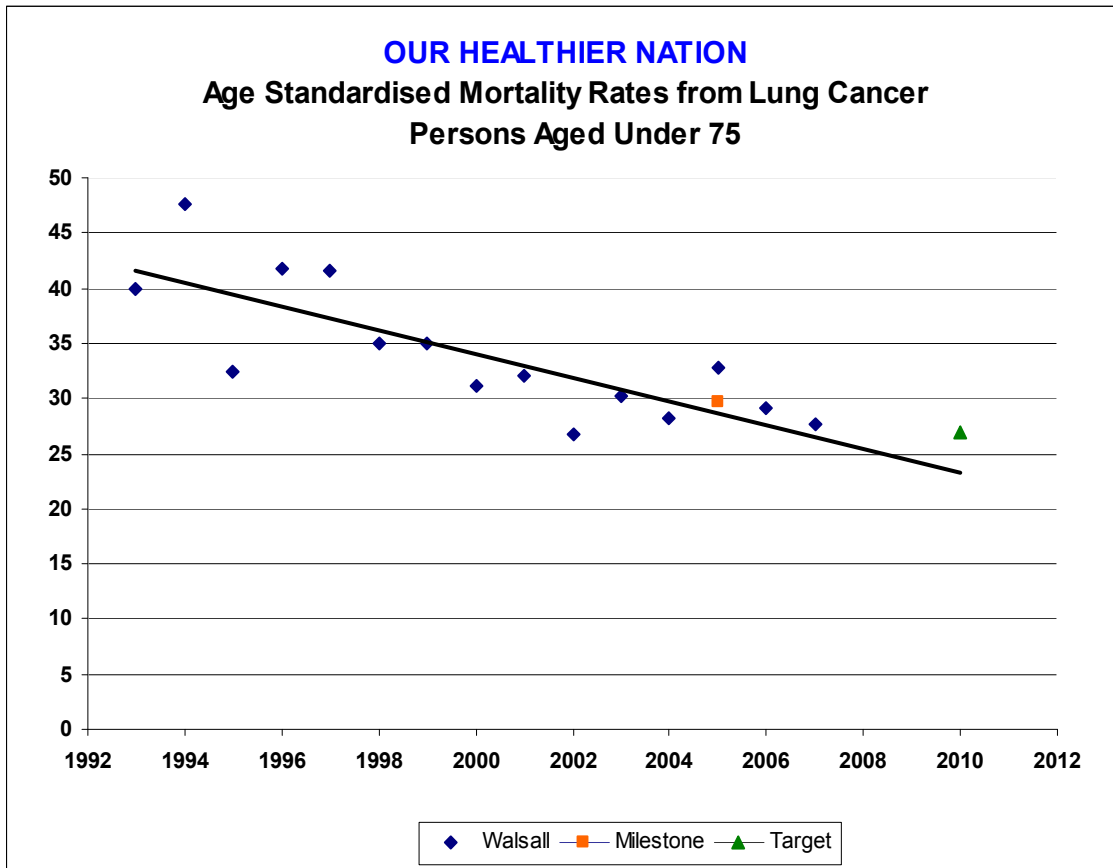


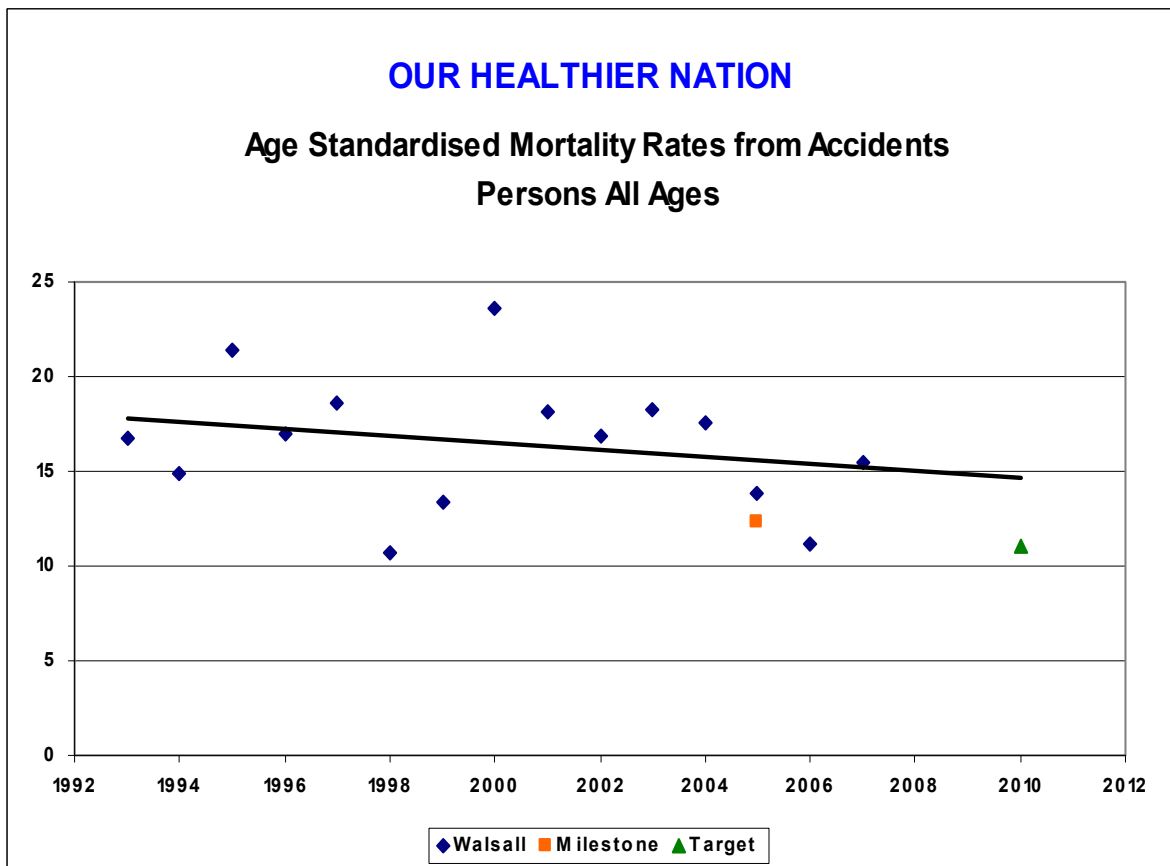
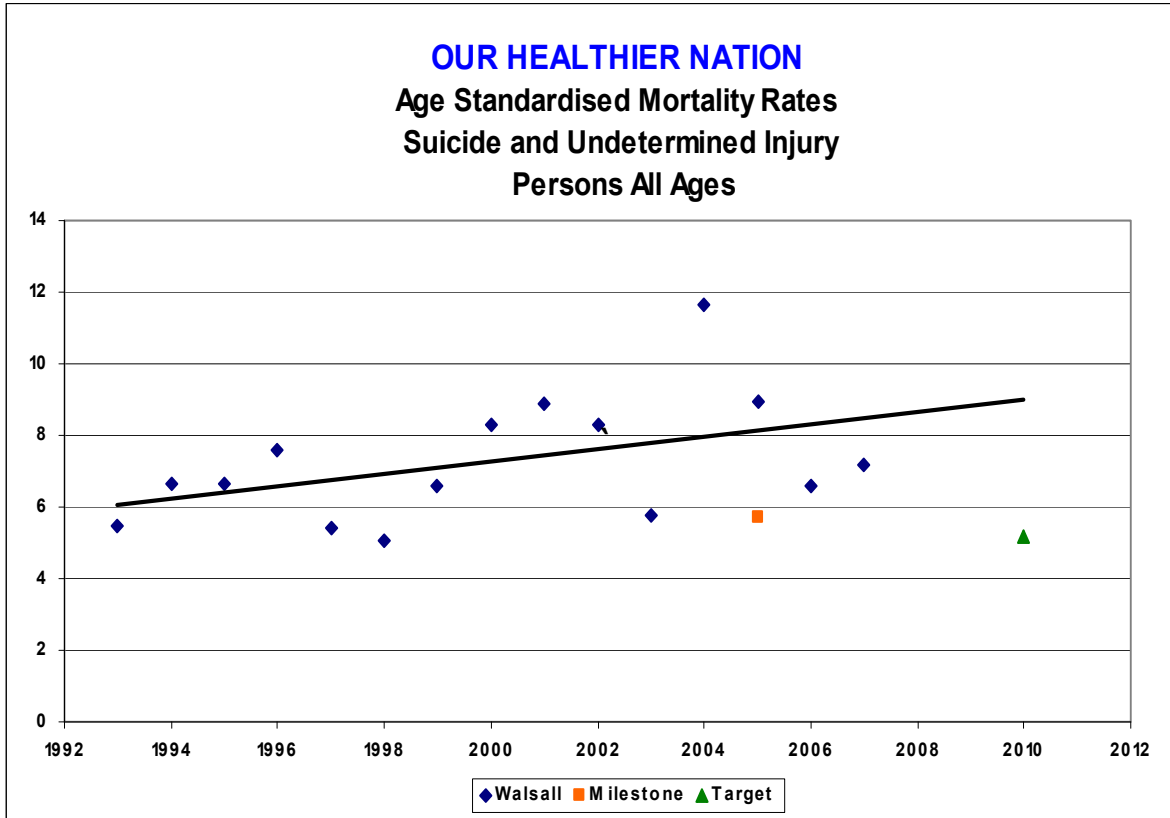
**OUR HEALTHIER NATION**  
**Age Standardised Mortality Rates from Stroke**  
**Persons Aged 65-74**



**OUR HEALTHIER NATION**  
**Age Standardised Mortality Rates from All Cancers**  
**Persons Aged Under 75**







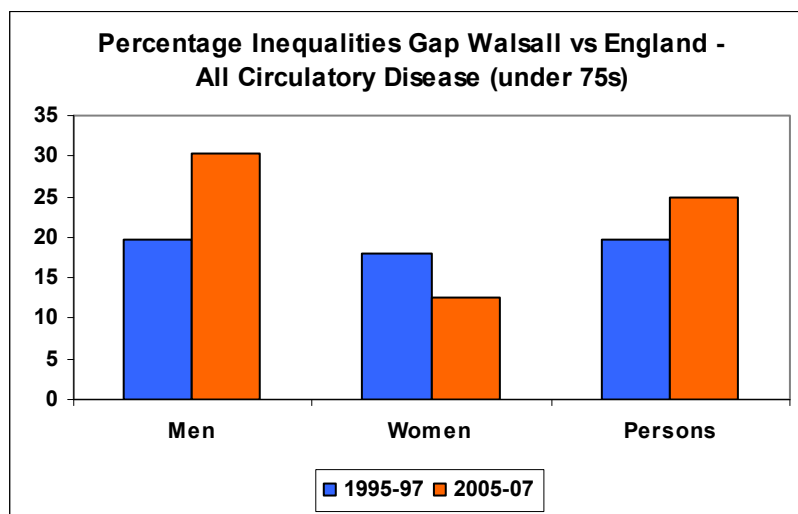
## APPENDIX 2

### WALSALL PROGRESS IN TACKLING INEQUALITIES THROUGH OUR HEALTHIER NATION TARGET AREAS: WALSALL VERSUS NATIONAL (ENGLAND) MORTALITY RATES

*The charts in this Appendix illustrate Walsall's progress in reducing health inequalities in each of the OHN target areas relative to the national average rate. **The charts show the percentage difference between the Walsall rate and the rate for England in the baseline period and in 2005-07.** The differences (inequality gaps) are derived from the data tables in the main body of the report. Each section of the Appendix should be read in conjunction with the respective section in the main body of the report.*

*In most (but not all) areas covered in this report, Walsall rates were higher than national rates in the 1995-97 baseline period. The inequalities gap will have therefore reduced if Walsall rates have fallen faster than national rates over the period to 2005-07 and vice –versa. In isolated cases, an increase in the national rate may also contribute to reducing the inequality gap – this is the situation in relation to accident mortality rates.*

## All Circulatory Disease Mortality (under 75s) - Inequalities Gap

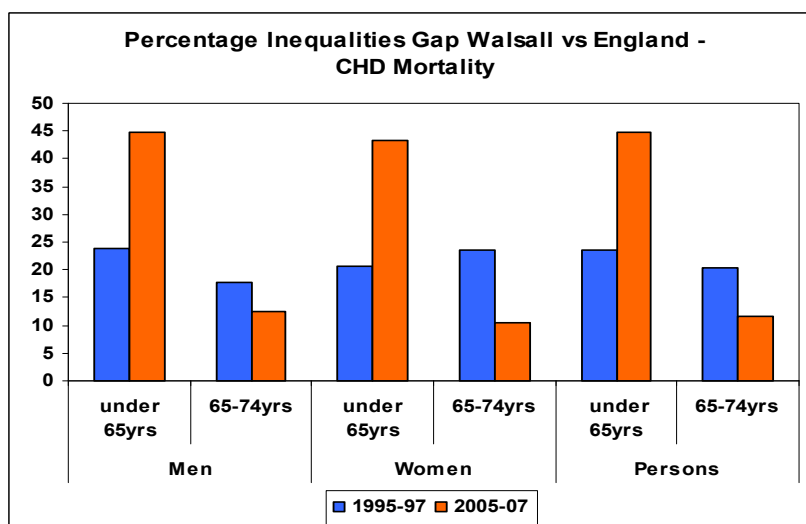


The inequalities gap has reduced for women but increased for men in Walsall.

In 2005-07, the all circulatory disease mortality rate in Walsall was 25% above the national average compared to 20% above the national rate in 1995-97.

CHD and stroke are considered separately.

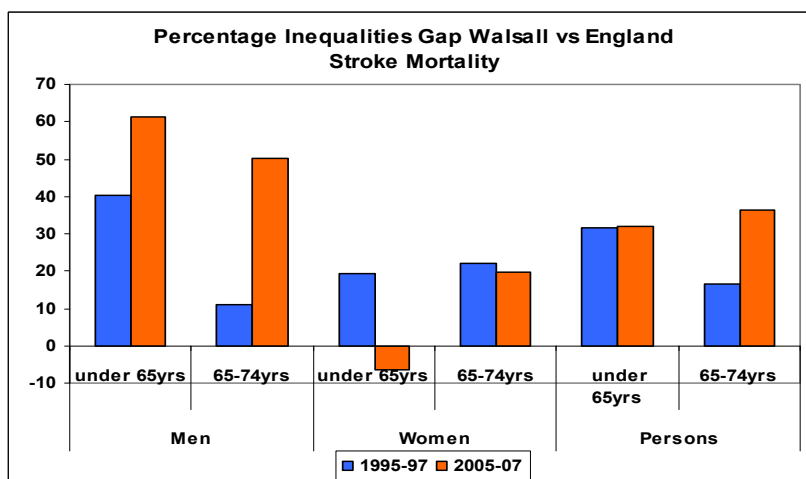
## Coronary Heart Disease Mortality - Inequalities Gap



The inequalities gap among the under 65 age group in Walsall has increased to 45% above the national rate in 2005-07. This reflects a faster national reduction (45%) in the mortality rate over the decade than in Walsall (37% reduction). An increase in male deaths in both 2006 and 2007 in Walsall has also contributed to this result.

Among the 65-74 yr age group in Walsall the inequalities gap has reduced (although it remains 12% above the national average) as Walsall deaths fell by 56% versus a 53% reduction in the national rate.

## Stroke Mortality - Inequalities Gap

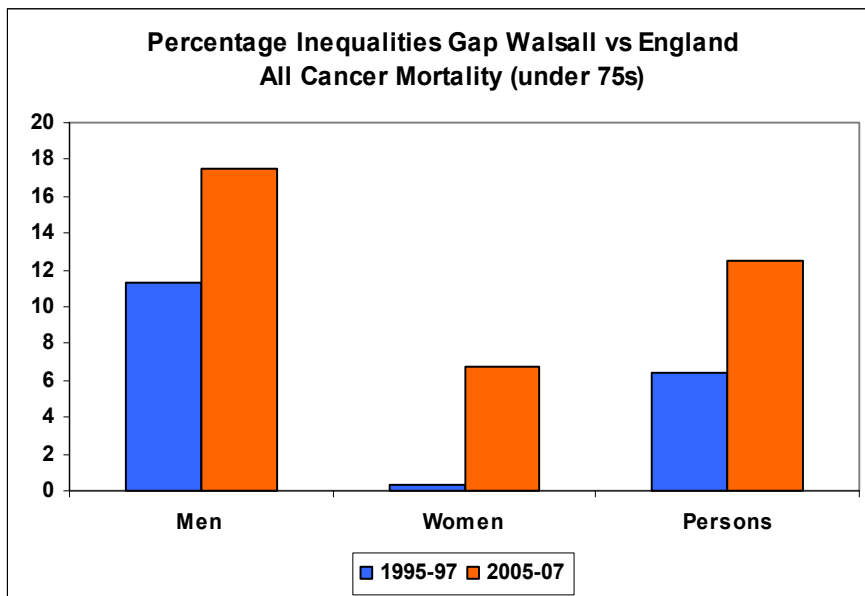


There has been little overall change in the inequalities gap among the under 65s, with the (persons) rate remaining 32% higher in Walsall. However, this masks a marginal reduction in the gap among Walsall women and a substantial increase in the gap among men.

For the older age group, the inequalities gap has also increased markedly among Walsall men, pushing the average Walsall rate (persons) over 35% higher than the national rate.

(Note that stroke mortality rates among the under 65s are much lower than in older groups both nationally and in Walsall.)

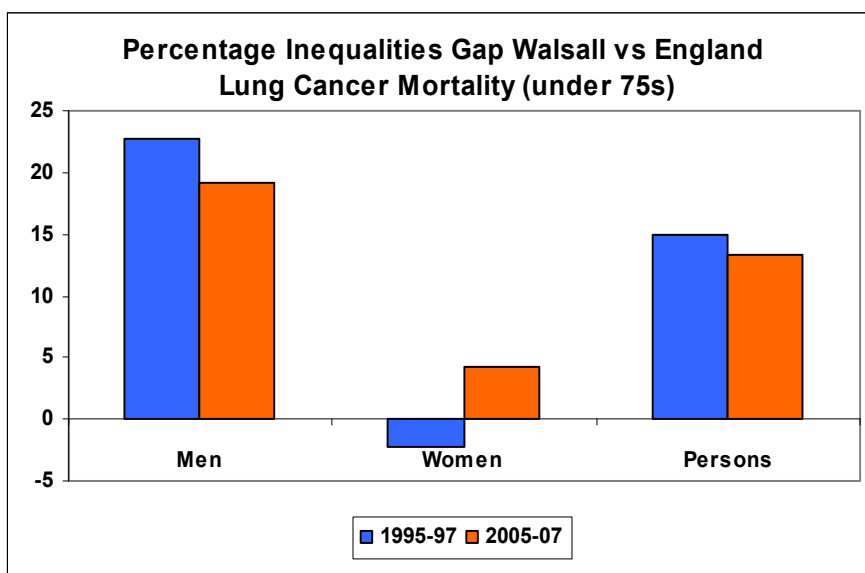
## All Cancers Mortality Rate (under 75s) - Inequalities Gap



The all cancer mortality inequalities gap has increased for both men and women in Walsall. This is because the Walsall rate has fallen more slowly than the national rate (Walsall reduction 14%, England reduction 18%).

In 1995-97 the rate for women under 75 in Walsall was very close to the national rate but in 2005-07 the rate was 7% higher than the national rate. For Walsall men, the rate was 17% higher than the national rate in 2005-07.

## Lung Cancer Mortality Rate (under 75s) – Inequalities Gap

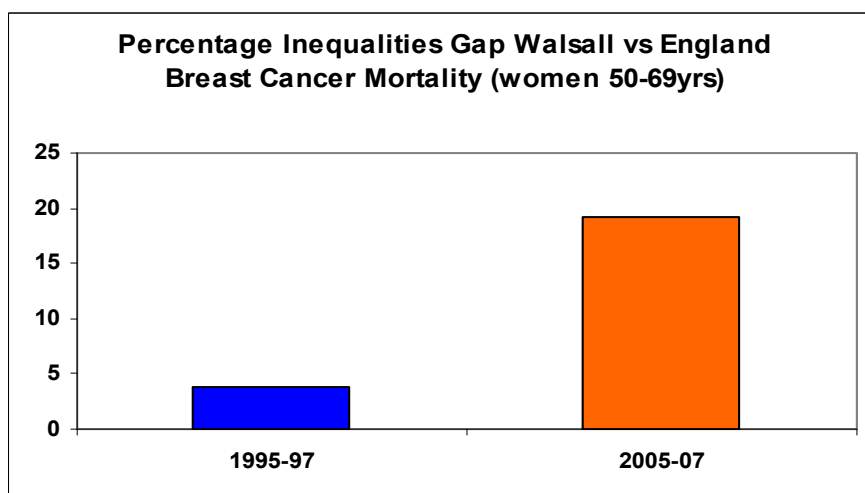


The lung cancer mortality rate inequality gap for men in Walsall has reduced marginally but remains 19% above the national rate.

For women the Walsall rate was marginally lower than the national rate in 1995-97 but is now 4% higher. This is because the Walsall rate has hardly changed since 1995-97 whereas the national rate has fallen by 7%.

In absolute terms lung cancer mortality rates are much lower for women than men (see section 4.1)

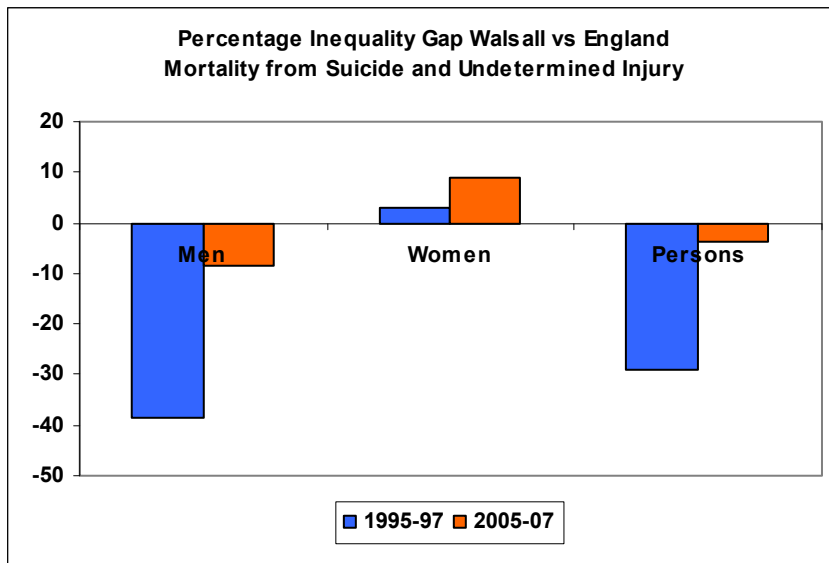
## Breast Cancer Mortality Rate (women aged 50-69) – Inequalities Gap



In 1995-97 Walsall's breast cancer mortality rate among women of screening age was about 4% above the national rate.

The national rate has fallen faster than the Walsall rate (24% reduction vs 13%), with the result that Walsall's rate was 19% above the national rate in 2005-07.

## Suicide and Undetermined Injury Mortality Rate – Inequalities Gap

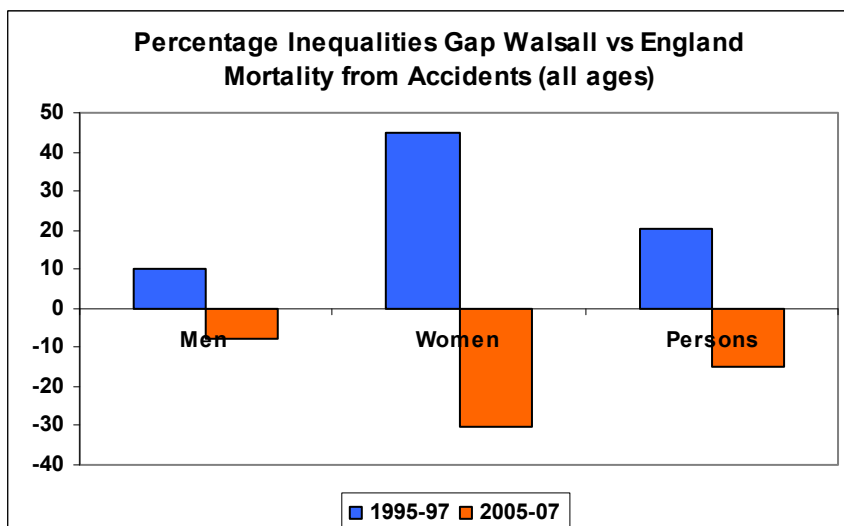


In 1995-97, Walsall had a 'favourable' inequalities gap for suicide among men. Subsequently, the local rate has increased whilst the national rate has reduced, although the Walsall rate remains almost 9% below the national rate.

For women in Walsall the inequalities gap has widened to 9% higher than the national rate in 2005-07.

'Small numbers' in Walsall contribute to large percentage fluctuations.

## Accidents Mortality Rate (all ages) – Inequalities Gap



The Walsall inequalities gap has reduced for both men and women since 1995-97. The accident mortality rate in 2005-07 was lower in Walsall for both men and women.

The major gap reduction has been for women in Walsall, which reflects a 50% reduction since 1995-97 in female accident mortality in Walsall versus a 4% increase in the national accident mortality rate among women.

## APPENDIX 3

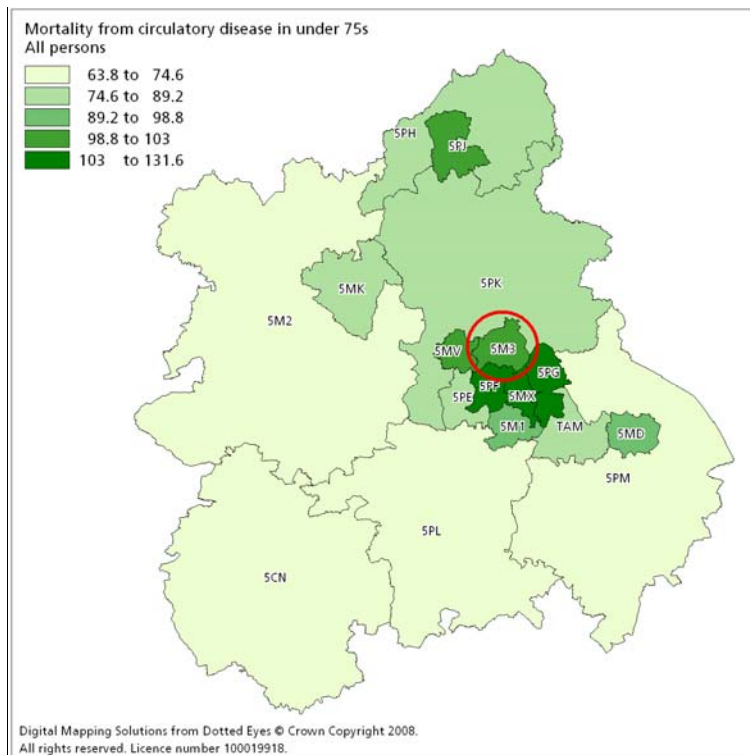
### OUR HEALTHIER NATION INDICATORS ACROSS THE WEST MIDLANDS IN 2005 - 2007

*The maps in this Appendix illustrate the variation across the West Midlands in the levels of the various Our Healthier Nation indicators in this Report during 2005-07. The districts are PCT districts. The denser the colour, the “worse” the indicator (eg higher mortality rate). The area codes for these maps are summarised below. **Walsall is 5M3***

<b>District</b>	<b>Area Code</b>
Herefordshire	5CN
South Birmingham	5M1
Shropshire County	5M2
<b>Walsall</b>	<b>5M3</b>
Coventry	5MD
Telford and Wrekin	5MK
Wolverhampton City	5MV
Heart of Birmingham	5MX
Dudley	5PE
Sandwell	5PF
Birmingham East and North	5PG
North Staffordshire	5PH
Stoke on Trent	5PJ
South Staffordshire	5PK
Worcestershire	5PL
Warwickshire	5PM
Solihull	TAM

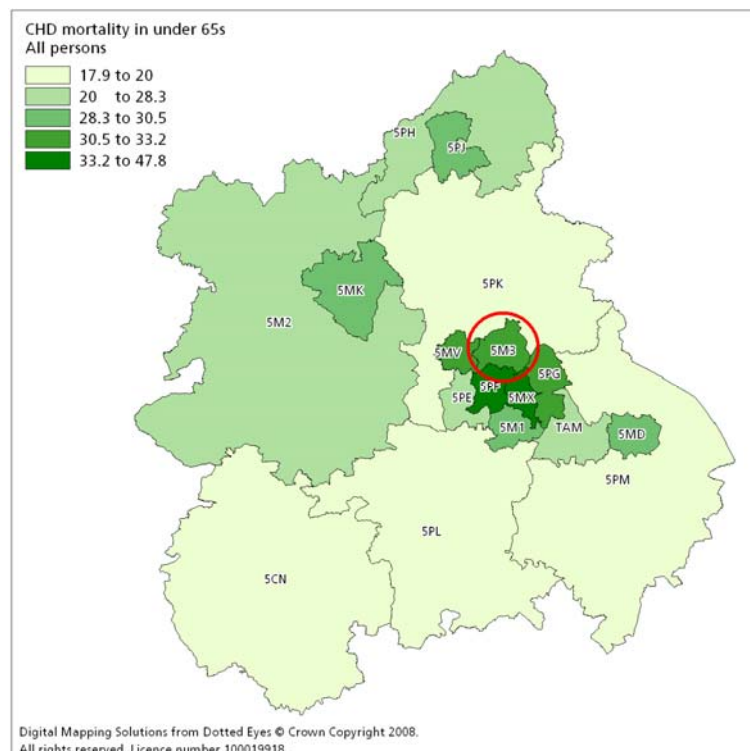
*Each section of the Appendix should be read in conjunction with the respective section in the main body of the report.*

## All Circulatory Disease in Persons Under 75 Years: Age Standardised Mortality per 100,000 Population in the West Midlands in 2005-7



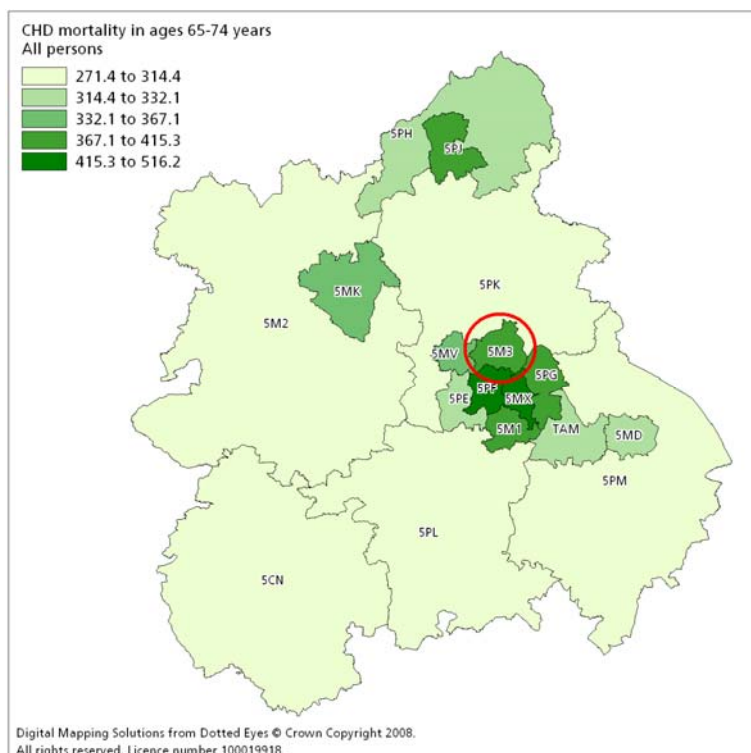
<p><b>Walsall (5M3)</b></p> <p><b>98.9</b></p> <p>The Walsall rate is 55% above the lowest rate in the West Midlands but 25% below the highest rate.</p>
<p><b>Lowest in Region:</b></p> <p><b>Herefordshire (5CN)</b></p> <p><b>63.8</b></p>
<p><b>Highest in Region:</b></p> <p><b>Heart of Birmingham (5MX)</b></p> <p><b>131.6</b></p>

## Coronary Heart Disease in Persons Under 65 Years: Age Standardised Mortality per 100,000 Population in the West Midlands in 2005-7



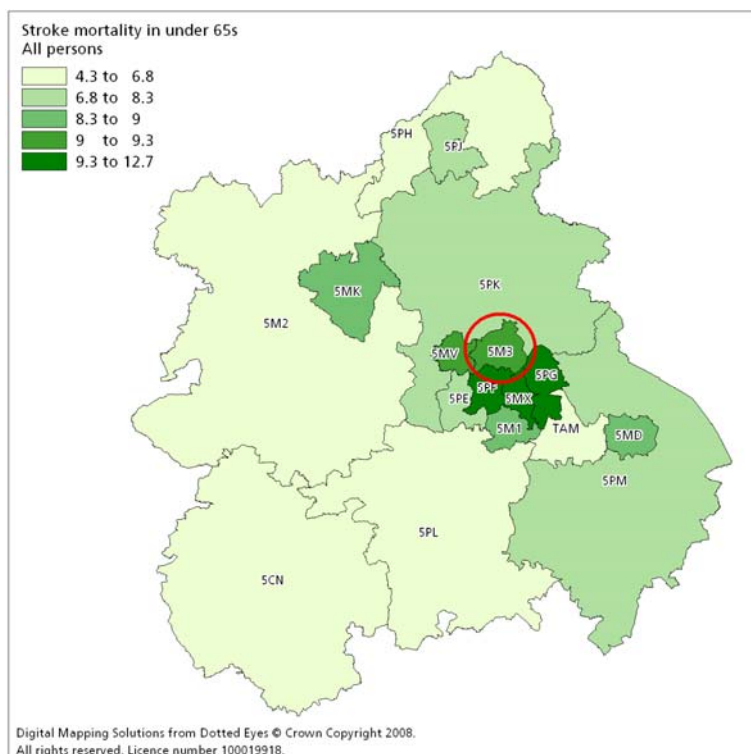
<p><b>Walsall (5M3)</b></p> <p><b>32.9</b></p> <p>The Walsall rate is 84% above the lowest rate in the West Midlands but 31% below the highest rate.</p>
<p><b>Lowest in Region:</b></p> <p><b>Herefordshire (5CN)</b></p> <p><b>17.9</b></p>
<p><b>Highest in Region:</b></p> <p><b>Heart of Birmingham (5MX)</b></p> <p><b>47.8</b></p>

## Coronary Heart Disease in Persons Aged 65-74 Years: Age Standardised Mortality per 100,000 Population in the West Midlands in 2005-7



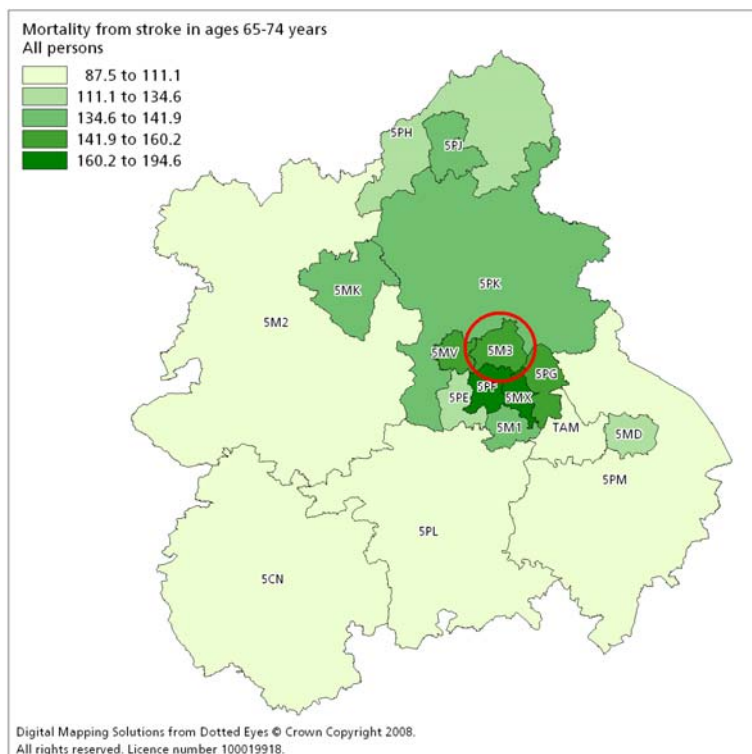
<b>Walsall (5M3)</b>
<b>367.1</b>
The Walsall rate is 35% above the lowest rate in the West Midlands but 29% below the highest rate.
<b>Lowest in Region:</b>
<b>Herefordshire (5CN)</b>
<b>271.5</b>
<b>Highest in Region:</b>
<b>Sandwell (5PF)</b>
<b>516.2</b>

## Stroke in Persons Aged Under 65 Years: Age Standardised Mortality per 100,000 Population in the West Midlands in 2005-7



<b>Walsall (5M3)</b>
<b>9.0</b>
The Walsall rate is more than double the lowest rate in the West Midlands but 29% below the highest rate.
<b>Lowest in Region:</b>
<b>Herefordshire (5CN)</b>
<b>4.4</b>
<b>Highest in Region:</b>
<b>Heart of Birmingham (5MX)</b>
<b>12.7</b>

## Stroke in Persons Aged 65-74 Years: Age Standardised Mortality per 100,000 Population in the West Midlands in 2005-7



**Walsall (5M3)**

**157.3**

The Walsall rate is 80% above the lowest rate in the West Midlands but 19% below the highest rate.

**Lowest in Region:**

**Herefordshire (5CN)**

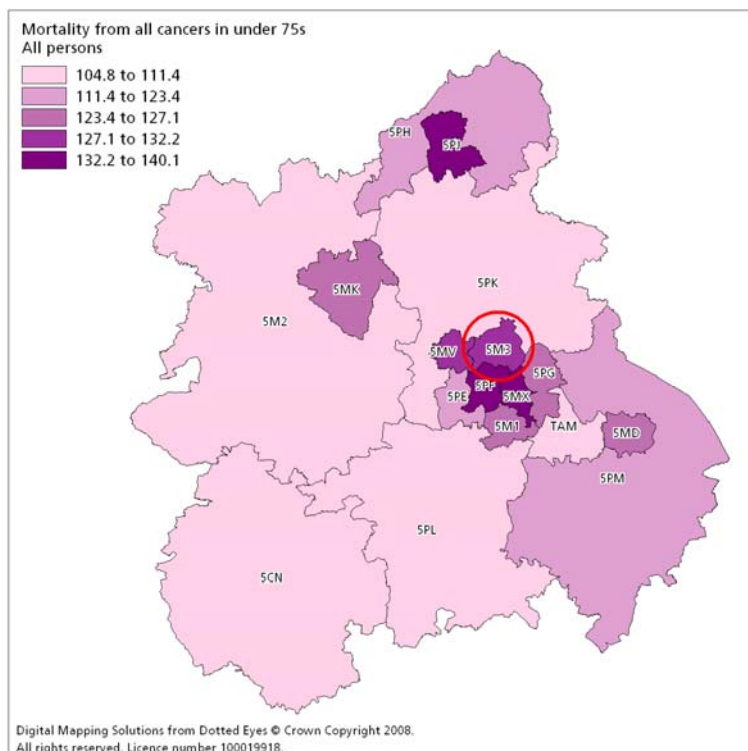
**87.6**

**Highest in Region:**

**Sandwell (5PF)**

**194.5**

## Cancer (all types) in Persons Aged Under 75 Years: Age Standardised Mortality per 100,000 Population in the West Midlands in 2005-7



**Walsall (5M3)**

**129.9**

The Walsall rate is 24% above the lowest rate in the West Midlands but 7% below the highest rate.

**Lowest in Region:**

**Herefordshire (5CN)**

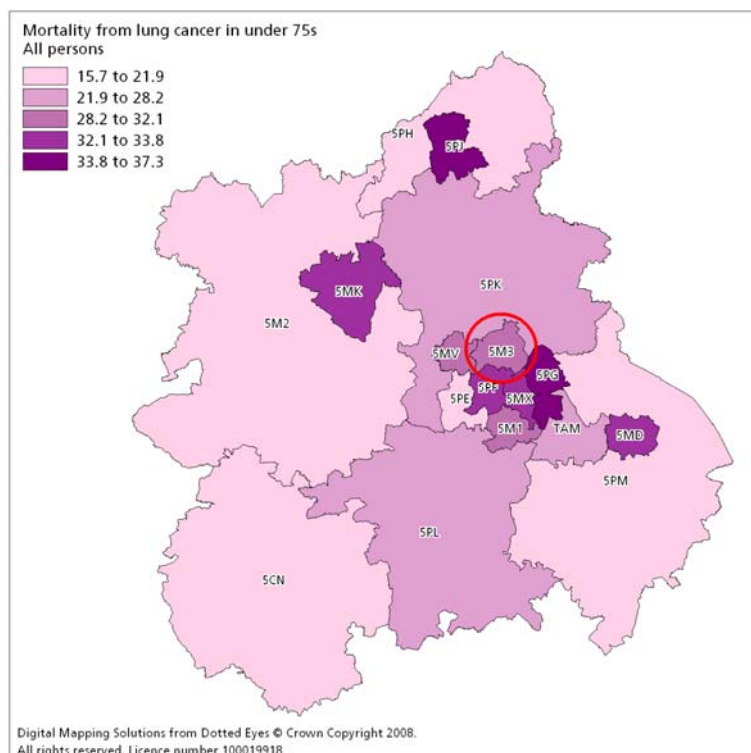
**104.8**

**Highest in Region:**

**Stoke on Trent (5PJ)**

**140.0**

## Lung Cancer in Persons Aged Under 75 Years: Age Standardised Mortality per 100,000 Population in the West Midlands in 2005-7



**Walsall (5M3)**

**29.9**

The Walsall rate is 90% higher than the lowest rate in the West Midlands but 20% below the highest rate.

**Lowest in Region:**

**Herefordshire (5CN)**

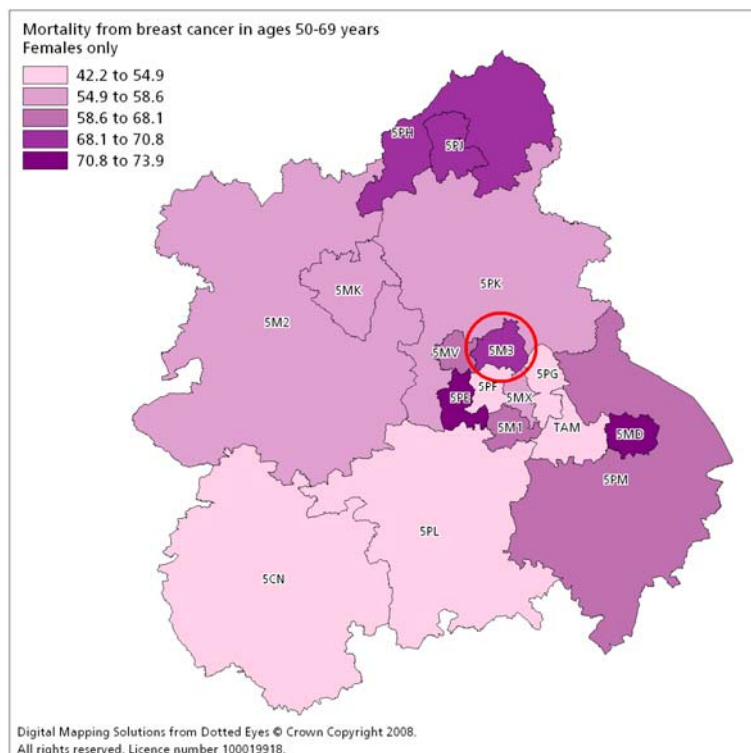
**15.7**

**Highest in Region:**

**Stoke on Trent (5PJ)**

**37.2**

## Breast Cancer in Females Aged 50-69 Years: Age Standardised Mortality per 100,000 Population in the West Midlands in 2005-7



**Walsall (5M3)**

**70.8**

The Walsall rate is 67% higher than the lowest rate in the West Midlands but 4% below the highest rate.

**Lowest in Region:**

**Sandwell (5PF)**

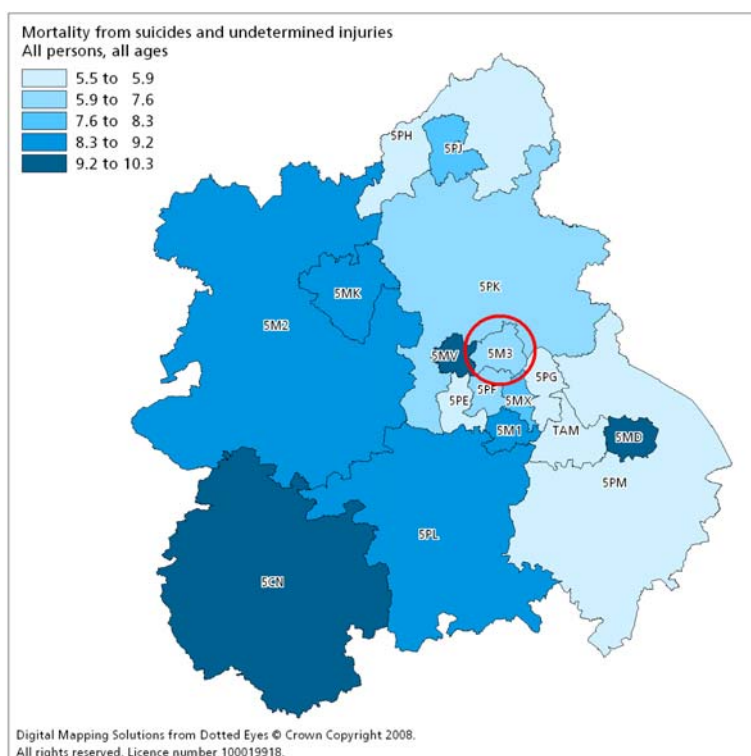
**42.3**

**Highest in Region:**

**Dudley (5PE)**

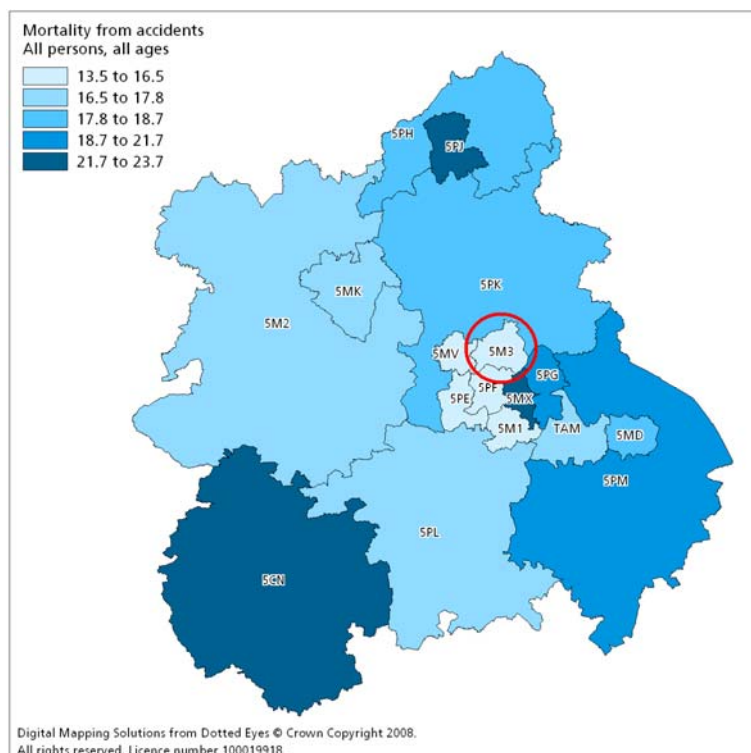
**73.8**

## Suicide and Undetermined Injury, All Ages: Age Standardised Mortality per 100,000 Population in the West Midlands in 2005-7



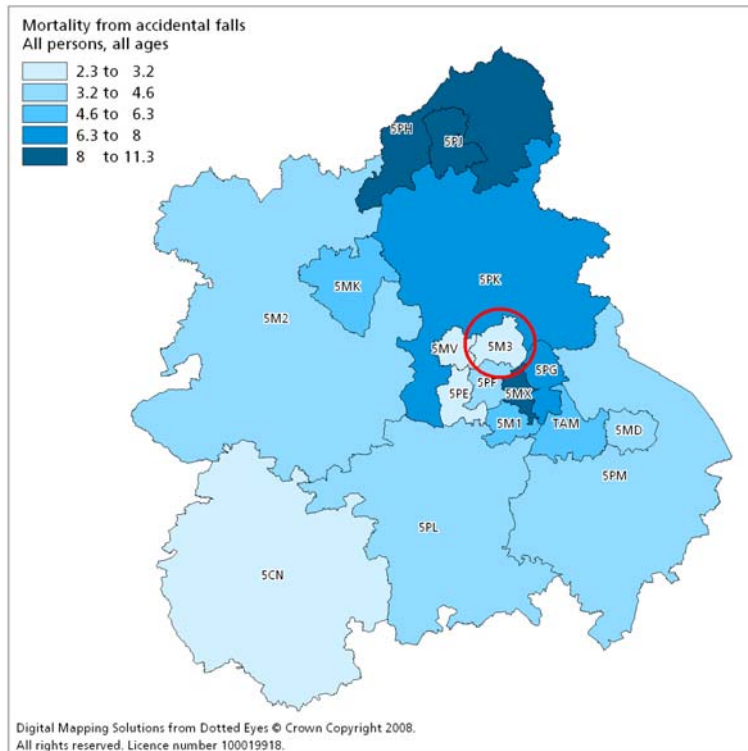
<b>Walsall (5M3)</b>
<b>7.6</b>
The Walsall rate is 36% higher than the lowest rate in the West Midlands but 26% below highest rate.
<b>Lowest in Region:</b>
<b>Birmingham East and North (5PG)</b>
<b>5.6</b>
<b>Highest in Region:</b>
<b>Wolverhampton (5MV)</b>
<b>10.2</b>

## Deaths from Accidents, All Ages: Age Standardised Mortality per 100,000 Population in the West Midlands in 2005-7



<b>Walsall (5M3)</b>
<b>13.5</b>
The Walsall rate is the lowest in the West Midlands and 43% below highest rate.
<b>Lowest in Region:</b>
<b>Walsall (5M3)</b>
<b>13.5</b>
<b>Highest in Region:</b>
<b>Heart of Birmingham (5MX)</b>
<b>23.6</b>

## Accidental Falls, All Ages: Age Standardised Mortality per 100,000 Population in the West Midlands in 2005-7



**Walsall (5M3)**

**3.1**

The Walsall rate is 36% higher than the lowest rate in the West Midlands but 72% lower than the highest rate.

**Lowest in Region:**

**Dudley (5PE)**

**2.3**

**Highest in Region:**

**Stoke-on-Trent (5PJ)**

**11.3**



**Saving Lives**



**TARGETS AND MONITORING DATA  
WALSALL – TEN YEARS ON**

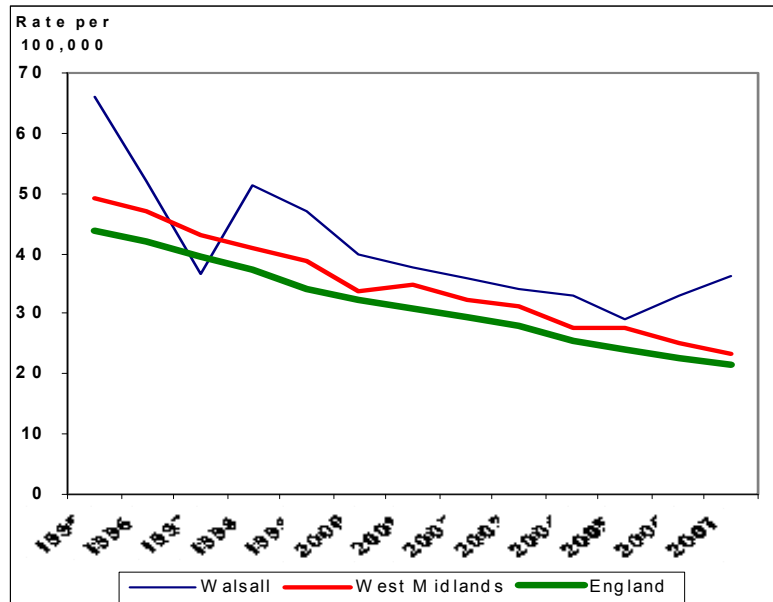
**ADDENDUM:**

**CHD MORTALITY AMONG UNDER 65s IN  
WALSALL**

## 1. Introduction

This year's annual report monitoring progress towards Our Healthier Nation targets (*Saving Lives, Our Healthier Nation, Targets and Monitoring Data Walsall – Ten Years On*) highlights a sharp increase in deaths from CHD among under 65s in Walsall in 2006 and 2007. The increase followed Walsall reductions in every year from 1998 to 2005. Moreover, the increases in 2006 and 2007 were against the background of continuing reductions in regional and national rates as illustrated in Figure 1 below.

**Figure 1. Age standardised Mortality Rates – CHD  
Persons Aged Under 65 Years**



A brief investigation has therefore been undertaken to analyse the increase in Walsall deaths and to examine provisional data for deaths in 2008.

## 2. Excess Deaths from CHD in 2005-07

The 'Ten Years On' monitoring report identified that total excess deaths in Walsall from all cardiovascular disease among people under 75 years of age was 56 deaths per year in the three year period 2005-07. A similar exercise focusing on deaths from CHD only indicates that about 32 (57%) of the 56 excess deaths were from CHD. Moreover, these excess CHD deaths were concentrated in the under 65s and among males, as illustrated in Table 1 below.

**Table 1. Excess deaths per year from CHD in Walsall in 2005-07**

	Under 65 years of age	Age 65-74 years
<b>Males</b>	<b>18.7</b>	<b>6.8</b>
<b>Females</b>	<b>4.3</b>	<b>2.4</b>
<b>Persons</b>	<b>23.0</b>	<b>9.2</b>

Source: Calculated from difference in age standardised CHD mortality rate for Walsall vs England in 2005-07, applied to number of deaths from CHD in Walsall.

Examining deaths from CHD among the under 65s in each of the three years from 2005 to 2007 suggests that the excess deaths trebled from 2005 to 2007. Whilst excess deaths among females fell, among males there was a more than five-fold increase, as illustrated in Table 2.

**Table 2. Excess deaths from CHD among under 65s in Walsall**

	2005	2006	2007
<b>Males</b>	5.2	21.0	29.8
<b>Females</b>	6.1	3.0	3.9
<b>Persons</b>	11.3	24.0	33.7

Source: Calculated from difference in age standardised CHD mortality rate for Walsall vs England in each year, applied to number of deaths from CHD in Walsall in each year.

Having identified male deaths as being the driver of the increase in CHD deaths among the under 65s in Walsall, the next section of this report analyses the increase in male deaths comparing the 'low' years of 2004 and 2005 to the 'high' years of 2006 and 2007.

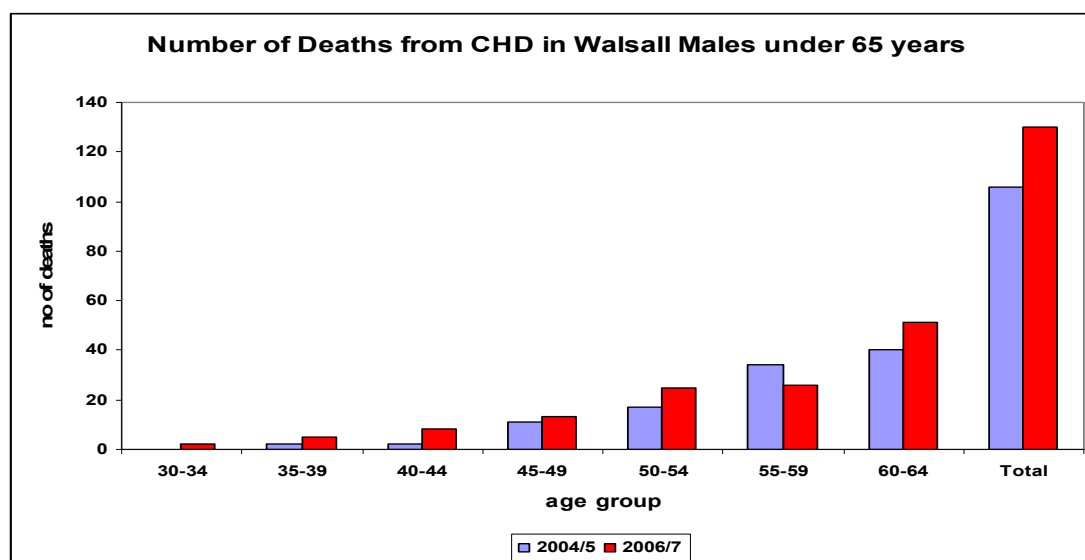
### 3. Male deaths from CHD among under 65s in Walsall, 2004-2007

In order to identify more clearly any changing patterns over this period and because of small numbers, deaths have been aggregated for 2004 and 2005 and for 2006 and 2007. On this basis, there were 106 deaths in 2004/5 and 130 deaths in 2006/7. In the two year period 2006/7 there was therefore an increase of 24 deaths compared to 2004/5.

#### 3.1 Male CHD deaths under 65 by age group

Figure 2 below shows that deaths among younger men under 45 years of age accounted for 10 of the 24 extra deaths in 2005/7. Deaths among 55-59 year olds fell but there were increases among 50-54 year olds and 60 to 64 year olds.

**Figure 2. Male CHD deaths under 65 years of age in Walsall by age group**



Source: ONS Public Health Mortality Files

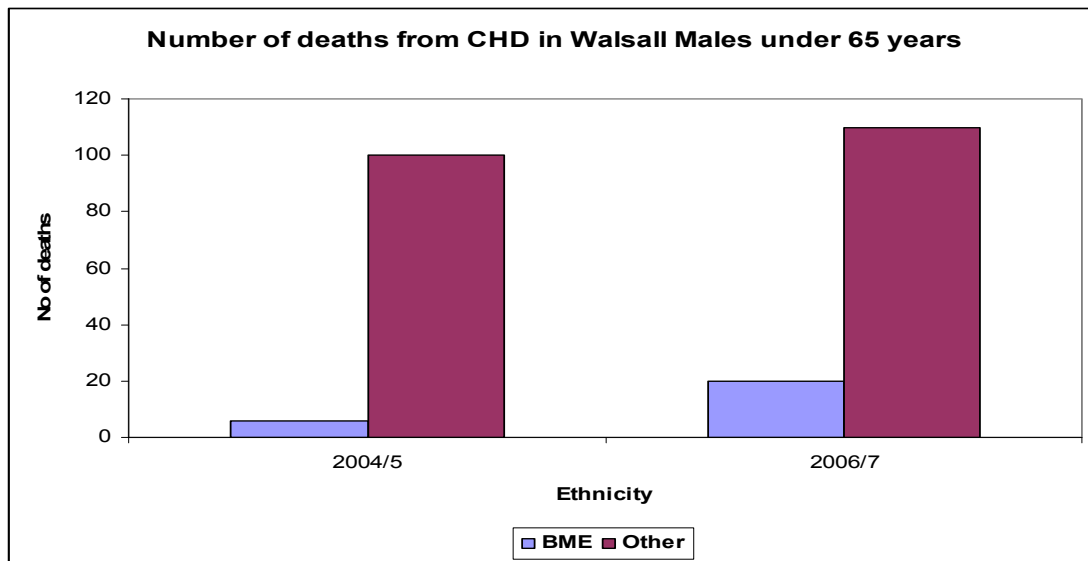
#### 3.2 Male CHD deaths under 65 years of age by ethnicity

A crude analysis of male deaths using surname as an indicator of ethnicity has been undertaken, dividing the deaths on this basis into BME males and other males. Clearly this will be subject to a margin of error. In particular, black males with English names will be omitted using this procedure

Of the 106 total deaths in the two years 2004/5, 6 deaths (5.7%) were in BME groups. In 2006/7 this had increased to 20 deaths in BME groups out of the total 130 deaths, representing over 15% of the total.

This means that at least 14 of the additional 24 deaths in 2006/7 were in men from BME groups (58% of the increase).

**Figure 3. Male deaths from CHD in Walsall by ethnicity**



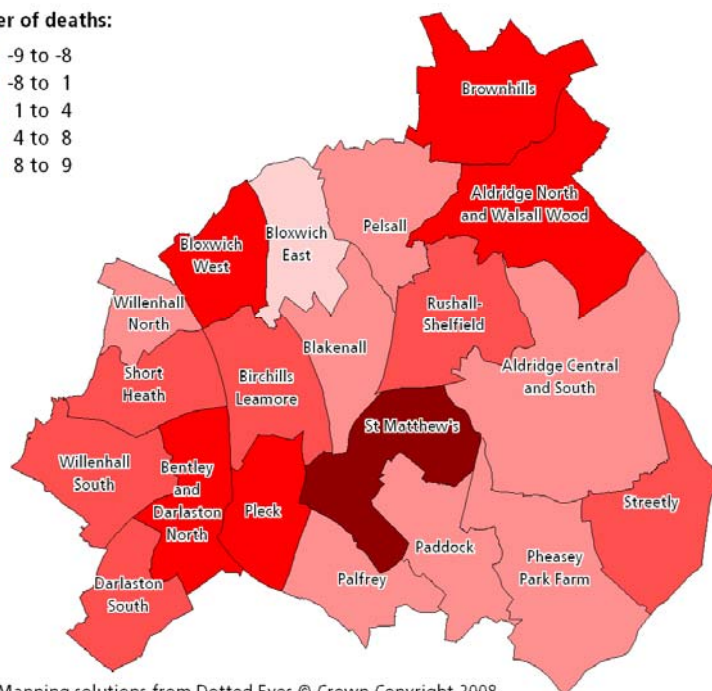
Source: ONS Public Health Mortality Files

### 3.3 Male deaths from CHD under 65 years of age by ward

Analysis of the changes in the number of deaths between 2004/5 and 2006/7 indicates that deaths increased in 12 of the 20 Walsall wards and fell in the remaining 8 wards.

#### Deaths From CHD in Walsall Among Males Aged Under 65 Years Change in Number of Deaths by Ward: 2004/5 to 2006/7

Number of deaths:



The biggest increases were in St Matthews (+8 deaths), Bentley and Darlaston North (+6 deaths), Brownhills (+5 deaths) and Pleck (+5 deaths).

The biggest reductions were in Bloxwich East (-9 deaths), Aldridge Central and South (-3 deaths), Blakenall (-2 deaths), Pelsall (-2 deaths), Pheasey (-2 deaths) and Willenhall North (-2 deaths).

Digital Mapping solutions from Dotted Eyes © Crown Copyright 2008. All rights reserved. Licence number 100019918.

#### 4. Provisional data for CHD deaths in 2008

Finalised mortality data for 2008 will not be published by ONS until December 2009. At that time full data becomes available for local districts, regions, England and England and Wales.

However, provisional data for 2008 is available for Walsall from the ONS Public Health Mortality Files. This does not include comparative regional and national data.

The provisional 2008 data for Walsall shows a fall in the mortality rate from the high levels of 2006 and 2007. Reductions are indicated for both males and females as summarised below.

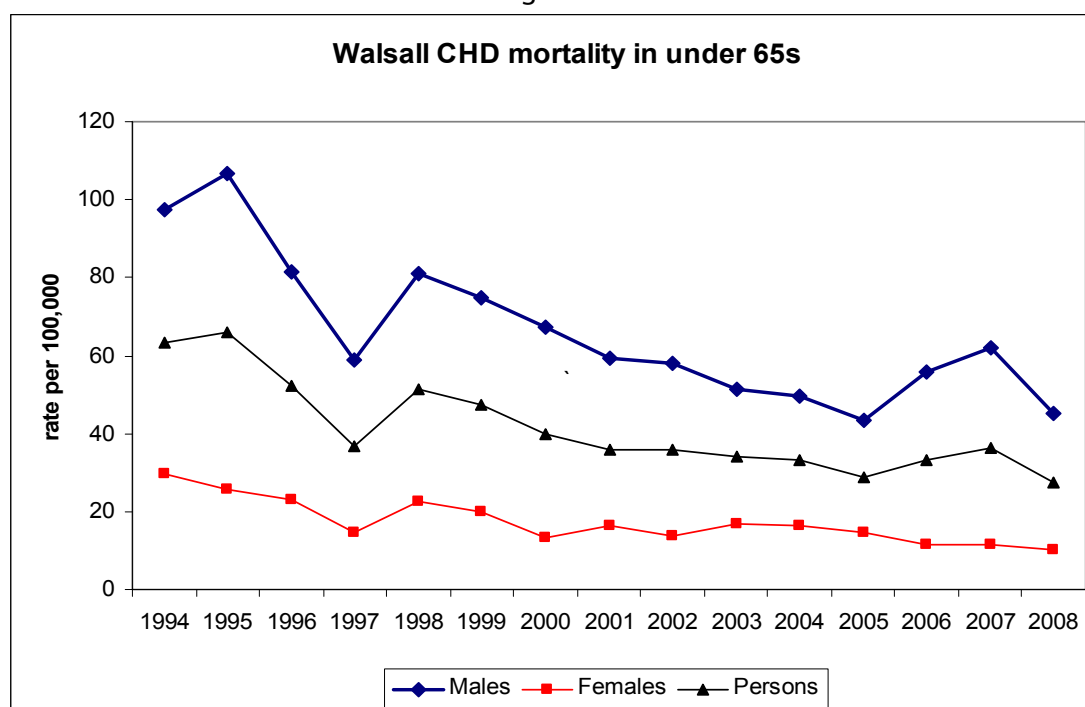
**Table 3. Mortality rate from CHD among under 65s in Walsall (Directly Age standardised rate per 100,000)**

	2004	2005	2006	2007	2008
<b>Male</b>	<b>49.8</b>	<b>43.5</b>	<b>55.7</b>	<b>61.8</b>	<b>45.3</b>
<b>Female</b>	<b>16.3</b>	<b>14.8</b>	<b>11.3</b>	<b>11.7</b>	<b>10.2</b>
<b>Persons</b>	<b>33.0</b>	<b>29.0</b>	<b>33.2</b>	<b>36.4</b>	<b>27.6</b>

There were 56 male deaths in 2008 compared with an average of 65 deaths per year during 2006/7. In comparison with the analysis of male deaths by age group and ethnicity in section 3, it may be noted that:

- In 2008 there were no deaths under 40 years of age, although there were 3 deaths in age group 40-44years; deaths among 55-59 and 60-64 year olds were also reduced.
- There were 6 deaths among BME groups in 2008, representing almost 11% of total deaths; this was much lower than in 2006/7 (15.7% of deaths) but higher than in 2004/5 (5.7% of deaths).

The restored downward trend for CHD mortality rates among the under 65s as a result of the reduction in 2008 is illustrated in Figure 4.



## 5. Conclusion

The increase in male deaths during 2006 and 2007 appears to have been reversed in 2008, although the age standardised rate remains marginally above the 2005 rate. The rate for women has continued its slow downward trend in 2008. Walsall excess deaths for 2008 cannot be estimated presently as provisional data for 2008 is not yet available for England as a whole.

Deaths have reduced substantially in younger age groups (under 45s) and among BME groups in 2008 compared to 2006/7, although BME deaths remain higher than in 2004/5.

Patterns by ward are complex and hampered by low numbers when looking at one year's figures. However wards with the highest number of deaths in 2006/7 have shown reductions in 2008, notably St Matthews, Bentley and Darlaston North, Brownhills and Pleck. In contrast, deaths increased in 2008 in Blakenall and Willenhall South.