

Saving Lives

OUR HEALTHIER NATION

TARGETS AND MONITORING DATA WALSALL – EIGHT YEARS ON

SAVING LIVES

OUR HEALTHIER NATION

TARGETS AND MONITORING DATA WALSALL – EIGHT YEARS ON

CONTENTS

	Page No
Foreword	1
1. Introduction	1
2. Summary of Progress Towards 'Our Healthier Nation' Headline Targets in Walsall After 8 Years	3
2.1 Coronary Heart Disease, Stroke and Related Conditions	
2.2 Cancer	
2.3 Mental Health – Suicide	
2.4 Accidents	
3. Saving Lives – Coronary Heart Disease, Stroke and Related Conditions	8
3.1 Coronary Heart Disease – Persons under 65	
3.2 Coronary Heart Disease – Persons 65-74	
3.3 Stroke – Persons under 65	
3.4 Stroke – Persons 65-74	
4. Saving Lives – Cancer	18
4.1 Lung Cancer – Persons under 75	
4.2 Breast Cancer – Females aged 50-69	
5. Saving Lives – Mental Health	24
6. Saving Lives – Accidents	26
6.1 Mortality Target for Accidents	
6.2 Mortality from Accidental Falls	
6.3 Serious Injury Target	
Appendix 1 Walsall Monitoring Data from 1993 Extrapolated to 2010	31
Appendix 2 Walsall Progress in Tackling Inequalities through Our Healthier Nation Target Areas	37
Appendix 3 Our Healthier Nation Indicators across the West Midlands in 2003-05	41

SAVING LIVES - OUR HEALTHIER NATION

TARGETS AND MONITORING DATA WALSALL - EIGHT YEARS ON

FOREWORD

I am pleased to present our annual report monitoring Walsall's progress towards the year 2010 targets set out in the Government's 'Our Healthier Nation' strategy. Although the original strategy has been accorded a lower profile in recent years, the same mortality targets in the strategy for circulatory disease, cancer and suicides are included in the broader 'Choosing Health' strategy (2004), with a strengthened emphasis on reducing inequalities, and were adopted as Public Service Agreement targets. We have compiled this report annually for several years as a unique resource for assessing progress and highlighting areas for concern.

Eight years on from the baseline period, encouraging progress has been made towards the mortality targets for circulatory disease and cancer but it is proving difficult to achieve a consistent downward trend in suicide and accident mortality. About 236 lives per year are already being saved in Walsall through movement towards the targets up to 2003-5, and achievement of year 2010 targets would save a further 155 lives per year.

Tackling inequalities remains a substantial challenge and increased attention has been given in this year's report to this issue. The inequalities gap between Walsall and national average (England) mortality rates has narrowed marginally for circulatory disease and more substantially for accidents, but for cancer the gap has widened. There are also gender inequalities within several of the targets. More than 70 extra lives per year would be saved by reducing Walsall mortality rates to the national averages.

I am confident that we can meet these challenges and commend this report as a resource to inform and assist in achieving the targets and reducing inequalities.

My thanks go to Graham Fee and Andrew Hood, who compiled the report.

Dr Sam Ramaiah
Director of Public Health

1. INTRODUCTION

The national strategy *Saving Lives-Our Healthier Nation* aimed to improve the health of the population as a whole in England and in addition to improve the health of the worst off in society, and in so doing reduce health inequalities. National targets for year 2010 were set in four areas: coronary heart disease and stroke, cancer, mental health and accidents. Intermediate 'milestones' also set for 2005.

In February 2001, the Walsall Department of Public Health Medicine published a discussion document 'Saving Lives – Our Healthier Nation: Baselines and Local Targets'. This report considered the national targets, the national and Walsall baselines and local past performance trends. Having regard also to the need to reduce health inequalities between Walsall and other districts in England, the report

recommended a series of targets for Walsall. In most cases, the proposed Walsall targets required larger percentage reductions for the various indicators than for the national targets because Walsall baseline mortality rates were higher than nationally. For some of the national 'headline' targets, local sub targets were also recommended which would contribute to achievement of the 'headline' targets. These local targets were considered challenging but achievable and were agreed by Walsall Health Authority, and subsequently adopted by Walsall Primary Care Trust.

The 'Choosing Health' White Paper in 2004 built on the Our Healthier Nation strategy and Walsall was included as one of 88 Primary Care Trusts across England as a 'Spearhead' PCT to drive forward this agenda. A series of Public Service Agreement (PSA) targets were established at national level, which included mortality rates for cardiovascular disease, cancer, and suicide rates, as well as targets related to smoking, breastfeeding, obesity and teenage conceptions. The Birmingham and Black Country Strategic Health Authority (now the West Midlands SHA) subsequently set PCT year 2010 targets for each of the PSA areas. Those for cardiovascular disease, cancer and suicide headline targets are included in this annual monitoring report as LDP/ 'Spearhead' targets (replacing the previous targets). For cardiovascular and cancer mortality, these LDP/Spearhead targets are slightly more challenging than the previous targets. However, the local sub-targets in this report remain as previously specified.

The targets cover the following areas:

Headline target: Mortality rate for coronary heart disease, stroke and related conditions in people under 75 (all circulatory diseases)

Walsall sub-targets: CHD mortality rate in under 65s
CHD mortality rate in ages 65-74
Stroke mortality rate in under 65s
Stroke mortality rate in ages 65-74

Headline target: Mortality rate for all cancers in people under 75

Walsall sub-targets: Lung cancer mortality rate in under 75s
Breast cancer mortality rate in women aged 50-69

Headline target: Mental health – suicide rate, all ages

Headline target: Mortality and serious injury from accidents, all ages

This report examines the progress achieved so far towards the Walsall targets, using the most recent data available from NCHOD, which is up to the year 2005. Trends since 1993 are shown, together with comparisons with West Midlands regional data and national data. Because of inevitable year-to-year fluctuations, the main measure of progress used in the report is monitoring data for the triennium 2003-05 compared to the baseline period 1995-97 (as recommended by the Department of Health). In this sense, the report is monitoring progress in Walsall 'Eight Years On', with a further 6 years to run to the target year 2010

In addition, the report also examines progress in reducing inequalities between Walsall and national mortality rates in the target areas covered by Our Healthier Nation. This is reported in more detail in Appendix 2, which should be read in conjunction with the relevant sections in the main body of the report. Appendix 3 maps the inequalities across the West Midlands region, highlighting Walsall's relative position.

2. SUMMARY OF PROGRESS TOWARDS OUR HEALTHIER NATION HEADLINE TARGETS IN WALSALL AFTER 8 YEARS.

Achievement of the year 2010 targets in Walsall will reduce *annual* deaths by a total of 391 relative to the average level of deaths during the baseline period 1995-97.

By 2005 Walsall had achieved an annual reduction of 236 deaths, which is 60% of the year 2010 target. Walsall is therefore well on the way to achieving the overall target for annual lives saved, although some specific areas (notably mental health and accidents) are not on-track to achieve their individual targets. The table below summarises progress by headline target.

TARGET AREA	WALSALL TARGET 2010	PROGRESS UP TO YEAR 2005		IS WALSALL ON TREND TO ACHIEVE TARGET?	HAVE INEQUALITY GAPS (WALSALL vs ENGLAND) BEEN REDUCED?
		% REDUCTION	ANNUAL LIVES SAVED		
All circulatory disease	50.7% reduction in death rate	-38.0%	189	✓	Small reduction in gap for men and women
Cancer	27.5% reduction in death rate	-13.0%	50	✓?	Increase in gap for men and women
Mental health –suicide rate	20% reduction in death rate	+35.4%	5*	X	Previous 'favourable' gap eliminated as Walsall rate has risen to marginally above the England rate
Accidents	41.7% reduction in death rate	-12.6%	2	X	Mortality gap reduced partly due to an increase in England rate among women Previous 'favourable' gap in injury admissions increased for women and reduced for men.
	10% reduction in serious injury	+5.6%		X	
TOTAL LIVES SAVED			236		

* = increase

A summary of progress in each of the target areas is outlined below.

2.1 Coronary Heart Disease, Stroke and Related Conditions (all circulatory diseases)

The Walsall mortality rate for **all circulatory diseases** in people under 75 has continued to fall, maintaining the long-term downward trend. A 38% reduction had been achieved by 2003-05 against the baseline, resulting in 189 fewer annual deaths. The year 2005 milestone (35.6% reduction) has been achieved and year 2010 target (50.7% reduction) should also be achieved if this trend continues. However, the national mortality rate has also fallen by 36% and therefore there has so far been only a marginal reduction in inequalities between Walsall and the national average rate. The Walsall mortality rate from all circulatory disease in 2003-05 remains 16% higher than nationally, compared with 20% higher in 1995-97.

Reducing the Walsall mortality rate for all circulatory disease among the under 75s to the level of the national rate would save an additional 40 lives per year in Walsall.

Nationally, the all circulatory disease mortality rate in men is more than double that of women and the pattern is similar in Walsall. The pattern of local and national mortality rate reductions means that the 2003-05 inequality gap is the same for both men and women in Walsall. (See pages 8-9 and Appendix 2).

Appendix 3 highlights the wide variation in circulatory disease mortality rates across the West Midlands. The Walsall rate is 55% higher than in Bromsgrove (which has the lowest rate in the West Midlands) but the Walsall rate is 20% lower than in Sandwell (which has the highest rate in the West Midlands). Similar variations across the region are noted for the component conditions of circulatory disease.

The Walsall mortality rates for **coronary heart disease (CHD) in the under 65s and in 65-74 year age group** have fallen by approximately 38% and 47% respectively for 2003-05 against baseline. 135 fewer Walsall people in these age groups died each year from CHD in 2003-05 than in 1995-97. For the 65-74 age group, the year 2005 'milestone' rate has been achieved in 2003-05 whilst the rate for the under 65s was only marginally below the 2005 'milestone'. Continuation of the present trend suggests that the 2010 targets for both age groups should be achieved. From the 2003-05 position, this will require further reductions in CHD mortality rates of 22% (under 65s) and 6% (65-74 age group).

For the under 65s, the Walsall reduction among men is marginally greater than achieved nationally but for women the Walsall reduction has been much less than nationally (24% v 42%). Consequently, the inequalities gap for women in Walsall has widened, with the mortality rate in Walsall almost 60% higher than the national rate in 2003-05.

In the 65-74 age group, mortality reductions of 47% have been achieved for both men and women in Walsall over the eight years to 2003-05 and this has helped reduce the inequalities gap from 20% to 14% above the national rate. (See pages 10-13 for charts and data and Appendix 2)

The Walsall mortality rates for **stroke in the under 65s and in the 65-74 age group** have fallen by 30% and 42% respectively for 2003-05 against baseline, resulting in 36 fewer stroke deaths per year than in 1995-97. The 2005 'milestone' rate has been achieved for the older age group but not for the under 65s. Similarly, the trend suggests that the 2010 target will be achieved for the 65-74 age group but not for the

under 65s. From the 2003-05 position, further reductions of 35% (under 65s) and 11% (65-74yrs) are required to meet the 2010 targets.

Stroke mortality rates among Walsall women under 65s and in the 65-74 age group have fallen more than nationally. Consequently, the inequalities gap has narrowed for women, particularly among 65-74 year old where the Walsall stroke mortality rate fell 14% below the national rate in 2003-05. Among men in Walsall the inequalities gap has widened, with stroke mortality rates 44% (under 65s) and 21% (65-74 year olds) higher than the national rates. It should be noted however that relatively 'small numbers' of stroke deaths under 65 mean that there can be large fluctuations in percentage changes. (See pages 14-17 for charts and data and Appendix 2).

2.2 Cancer

The Walsall mortality rate for **all cancers** in people under 75 was 13% lower in 2003-05 than in 1995-97, resulting in 50 fewer annual deaths. The long-term trend suggests that both the 2005 milestone and the 2010 target may be marginally underachieved. The 2010 target will require a further reduction (from 2003-05) of 17% in the Walsall mortality rate.

The national rate for all cancer mortality among people under 75 fell by almost 16% in this period and therefore the Walsall inequalities gap has widened slightly, with the Walsall (persons) cancer mortality rate remaining 10% higher than the national average. The rates have fallen more slowly than national rates for both men and women in Walsall, with the result that the cancer mortality rate for Walsall men is now 14% above the national rate and for Walsall women 4% above the national rate. (See pages 18-19 for charts and data and Appendix 2).

Reducing the Walsall mortality rate for all cancers among the under 75s down to the national rate would save an additional 33 lives per year in Walsall.

Appendix 3 highlights the wide variation in all cancer mortality rates across the West Midlands. The Walsall rate is 36% higher than in Warwick (which has the lowest rate in the West Midlands) but is only 5% below the rate in Sandwell (which has the highest rate in the region).

The Walsall mortality rate for **lung cancer** in people under 75 fell by 21%, marginally higher than the 20.5% reduction in the national rate over this period, resulting in 22 fewer annual deaths in Walsall. Nevertheless, the Walsall rate remained 14% higher than the national rate in 2003-05. The long-term trend suggests that the 2010 target should be achieved. This will require further reductions from 2003-05 of 11% (persons).

Despite this outlook, there remains a concern that the Walsall target may be achieved without a major reduction in the lung cancer mortality rate in women. This is because all of the lung cancer progress in Walsall so far has been among men, where the Walsall mortality rate has fallen by 31% (although still 16% higher than the national rate). Among women in Walsall, the lung cancer mortality rate in 2003-05 was slightly higher than in 1995-97 and 10% higher than nationally. This compares with a marginally lower Walsall lung cancer mortality rate for women in 1995-97. (See pages 20-21 for charts and data and Appendix 2).

The Walsall mortality rate for **breast cancer in women of screening age 50-69** in 2003-05 was 28% lower than in 1995-97, resulting in 6 fewer deaths per year. There is substantial year to year fluctuation in the relatively small number of deaths, including a marked increase in 2005 (23 deaths) from the 10 year low of 2004 (11 deaths). The 2010 target is already being exceeded, suggesting that Walsall should now aim for a more ambitious 2010 target. Moreover, from being 4% higher than the national rate in 1995-97, the Walsall rate in 2003-05 was 5% lower than the national rate. (See pages 22-23 for charts and data and Appendix 2).

2.3 Mental health – Suicide rates

Throughout most of the 1990s the suicide rate in Walsall was well below the national average. However, although there are substantial year-to-year fluctuations, there has been a trend increase in the suicide rate in Walsall in the last 10 years. In 2003-05 the Walsall rate was 35% higher than in 1995-97 and the 2010 target seems unlikely to be achieved. A consistent reduction to no more than 13 deaths per year would be needed to achieve the target. This compares with an average of 22 suicide deaths per year in 2003-05.

Over the monitoring period, the suicide rate among Walsall men increased by 37% and in women the rate increased by 31%. (See pages 24-25 for charts and data and Appendices 1 and 2)

Appendix 3 highlights the wide variation in the suicide rate across the West Midlands. The Walsall rate is 2.5 times higher than in South Staffordshire (which has the lowest rate in the West Midlands) but the Walsall rate is 40% lower than in South Shropshire (which has the highest rate in the region). However, it should be noted that the relatively small number of deaths in each area contributes to the wide variation in rates.

2.4 Accidents

The Walsall **mortality rate from accidents** was almost 13% lower in 2003-05 than in 1995-97, resulting in 2 fewer deaths per year. There was a substantial reduction in accidental deaths in year 2005, although the mortality rate (at 13.9) was still above the 2005 Milestone rate (12.3). Moreover, there are substantial year to year fluctuations in accidental deaths in Walsall and the long-term trend suggests the 2010 target will not be achieved. The 2010 target would require a further reduction (from 2003-05) of 34% in the Walsall mortality rate.

The inequalities gap between Walsall and the national rate has narrowed substantially and in 2003-05 the Walsall mortality rate was only 3% higher than the national rate compared with 20% higher in 1995-97. Achieving the national mortality rate in Walsall would result in 2 fewer accidental deaths per year. The greatest progress in Walsall has been in reducing accidental deaths among women, where the Walsall mortality rate is now marginally below the national rate, although an additional contributory factor in narrowing the inequalities gap has been an increase in the national accident mortality rate for women.

Appendix 3 highlights the wide variation in accident mortality rates across the West Midlands. The Walsall rate is 40% higher than the rate in Bridgnorth (which has the lowest rate in the West Midlands), but the Walsall rate is about half the rate in South Shropshire (which has the highest accident mortality rate in the region).

For several years up to 2004 there was a rising trend in deaths from accidents among the over 65s. Concern has been expressed in this regard in relation to **deaths from accidental falls**. The Walsall mortality ratio for deaths from accidental falls rose progressively from 1998 to a peak in 2003 when it was 3 times the national average. However, these deaths fell substantially in both 2004 and 2005 and in the latter year the Walsall rate fell 29% below the national average. (See pages 26-27 for charts and data and Appendix 2)

The Walsall rate of **serious injury from accidents** was 6% higher in 2004-05 than in the baseline period of 1995/6, representing an extra 107 annual hospital episodes. Accidental injury admissions have also increased regionally and nationally (by 7% and 5% respectively) over this period. The Walsall rate remains 11% below the national rate in 2004-05 and is lower than the national rate for both men and women. Walsall and national targets for 2010 are unlikely to be achieved.

The increased admissions rate in Walsall is among men (+15%), with the admissions rate among Walsall women marginally lower in 2004-05 than in 1995-96. (See pages 28-29 for charts and data and Appendix 2).

3. SAVING LIVES – CORONARY HEART DISEASE, STROKE AND RELATED CONDITIONS (All circulatory diseases)

National Target

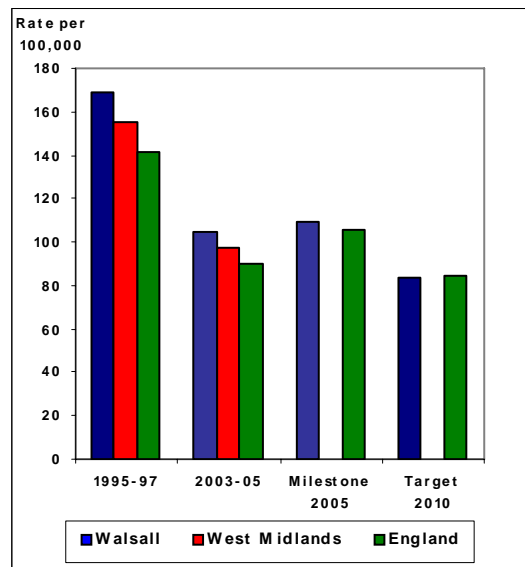
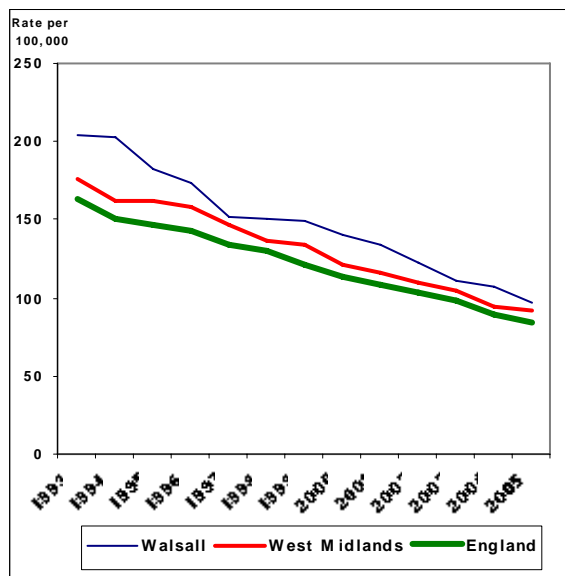
To reduce the death rate in people under 75 by at least 40% by 2010 (Milestone 25 % reduction by 2005).

WALSALL'S LDP ('SPEARHEAD') TARGET

BY YEAR	% REDUCTION	RATE (PER 100000)	ANNUAL LIVES SAVED
2005	35.6	108.9	175
2010	50.7	83.4	249

OUR HEALTHIER NATION

Age Standardised Mortality Rates from All Circulatory Diseases Persons Aged Under 75



Source: Compendium of Clinical and Health Indicators Dec 2006

Deaths from all circulatory diseases in persons under 75 (ICD10 I00-I99)

	1993	1994	1995	1996	1997	1998	1999	2000	2001	2002	2003	2004	2005
Number of Deaths in Walsall	596	599	526	506	443	434	432	405	385	355	322	307	278

Age Standardised Mortality Rate per 100,000 Population Aged Under 75 Years

	1995-97 (Baseline)	2003-05	Cumulative Progress: % Reduction Annual Lives Saved	
PERSONS:				
Walsall	169.2	104.9	-38.0	189
West Midlands	155.4	97.2	-37.5	
England	141.3	90.4	-36.0	
MALES:				
Walsall	237.3	147.0	-38.0	121
West Midlands	216.8	136.6	-37.0	
England	198.3	126.8	-36.0	
FEMALES:				
Walsall	105.8	65.4	-38.0	68
West Midlands	98.6	60.1	-39.0	
England	89.6	56.4	-37.0	

Note: Male + Female 'lives saved' may not add to Persons 'lives saved' due to rounding

Sections 3.1 to 3.4 below indicate progress against local targets for coronary heart disease and stroke, for under 65s and ages 65 – 74. These are key components of the 'all circulatory disease' target.

3.1 CORONARY HEART DISEASE – PERSONS UNDER 65

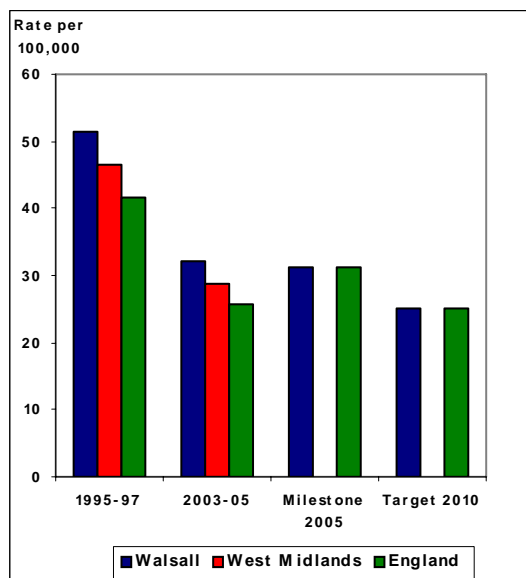
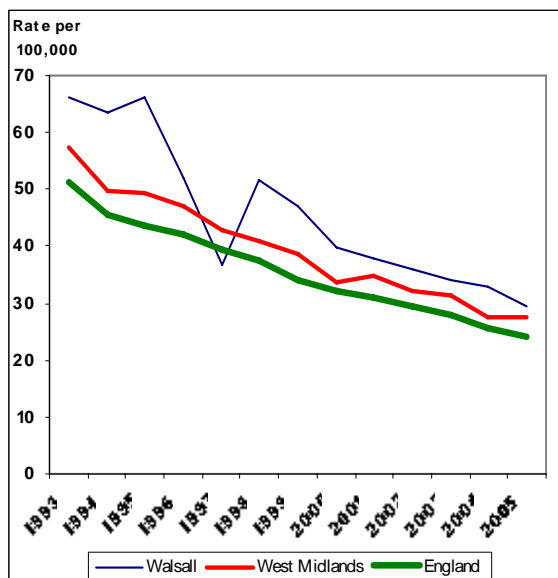
National Target

To reduce the death rate by at least 40% by 2010 (Milestone 25% reduction by 2005).

WALSALL'S TARGET			
BY YEAR	% REDUCTION	RATE (PER 100000)	ANNUAL LIVES SAVED
2005	39.2	31.3	46
2010	51.4	25.0	60

OUR HEALTHIER NATION

Age Standardised Mortality Rates – CHD Persons Aged Under 65



Source; Compendium of Clinical and Health Indicators Dec 2006

Deaths from coronary heart disease in persons under 65 (ICD10 I20-I25, ICD9 410-414 adjusted))

	1993	1994	1995	1996	1997	1998	1999	2000	2001	2002	2003	2004	2005
Number of Deaths in Walsall	151	145	150	117	83	118	108	89	85	81	78	75	67

Age Standardised Mortality Rate per 100,000 Population Aged Under 65 Years

	1995-97 (Baseline)	2003-05	Cumulative % Reduction	Progress: Annual Lives Saved
PERSONS:				
Walsall	51.5	32.1	-37.6	43
West Midlands	46.4	28.9	-37.7	
England	41.7	25.8	-38.1	
MALES:				
Walsall	82.2	48.5	-41.0	38
West Midlands	73.0	46.1	-36.8	
England	66.4	41.9	-36.9	
FEMALES:				
Walsall	21.1	16.0	-24.2	5
West Midlands	19.9	11.9	-40.2	
England	17.5	10.1	-42.2	

Note: Male + Female 'lives saved' may not add to Persons 'lives saved' due to rounding

3.2 CORONARY HEART DISEASE – PERSONS AGED 65 – 74

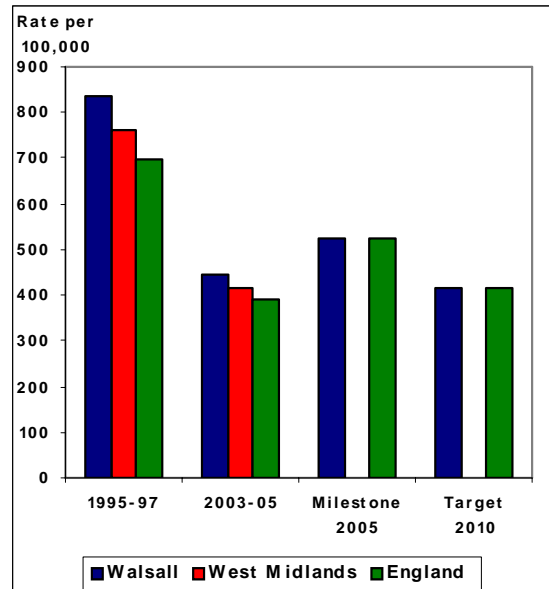
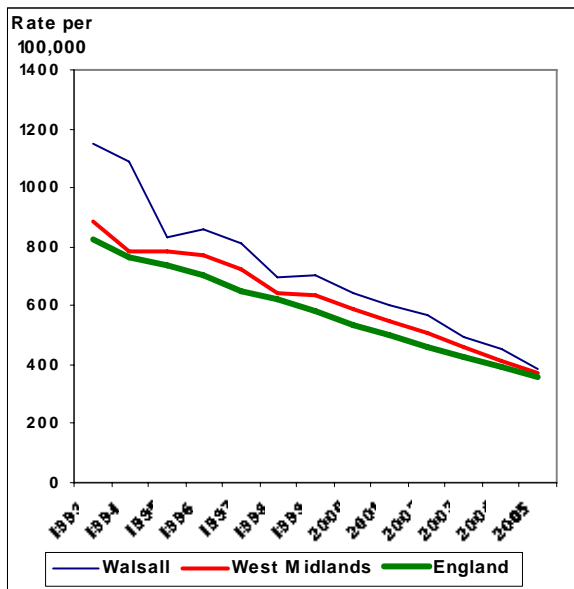
National Target

To reduce the death rate by at least 40% by 2010 (Milestone 25% reduction by 2005).

WALSALL'S TARGET			
BY YEAR	% REDUCTION	RATE (PER 100000)	ANNUAL LIVES SAVED
2005	-37.7	522.0	75
2010	-50.1	417.7	99

OUR HEALTHIER NATION

Age Standardised Mortality Rates – CHD Persons Aged 65-74



Source: Compendium of Clinical and Health Indicators Dec 2006

Deaths from coronary heart disease in persons aged 65-74 (ICD10 I20-I25, ICD9 410-414 adjusted)

	1993	1994	1995	1996	1997	1998	1999	2000	2001	2002	2003	2004	2005
Number of Deaths in Walsall	273	262	198	205	192	164	166	153	142	134	118	108	93

Age Standardised Mortality Rate per 100,000 Population Aged Between 65-74 Years

	1995-97 (Baseline)	2003-05	Cumulative % Reduction	Progress: Annual Lives Saved
PERSONS:				
Walsall	837.4	445.4	-46.8	92
West Midlands	759.2	415.6	-45.2	
England	696.1	392.4	-43.6	
MALES:				
Walsall	1192.8	634.5	-46.8	59
West Midlands	1093.8	612.9	-44.0	
England	1012.9	574.2	-43.3	
FEMALES:				
Walsall	530.7	277.9	-47.6	33
West Midlands	471.5	238.0	-49.5	
England	429.4	229.5	-46.5	

Note: Male + Female 'lives saved' may not add to Persons 'lives saved' due to rounding

3.3 STROKE – PERSONS UNDER 65

National Target

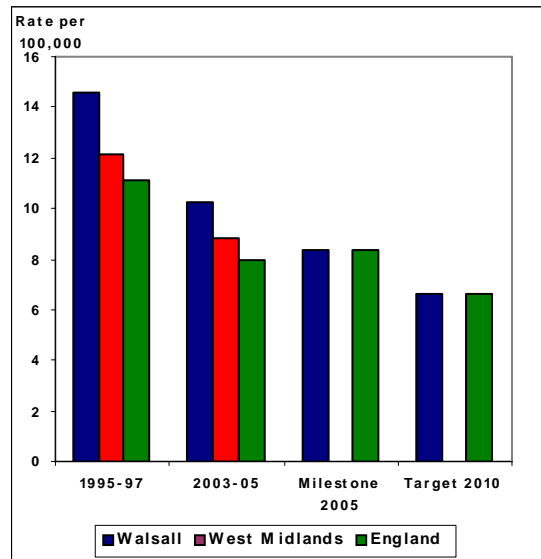
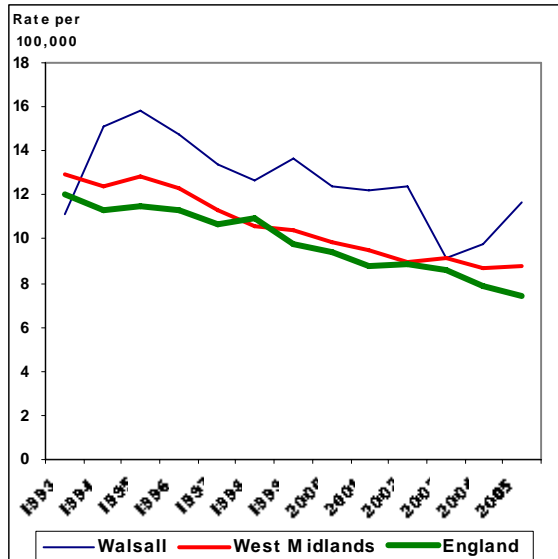
To reduce the death rate by at least 40% by 2010 (Milestone 25% reduction by 2005).

WALSALL'S TARGET

BY YEAR	% REDUCTION	RATE (PER 100000)	ANNUAL LIVES SAVED
2005	43.1	8.32	14
2010	54.2	6.66	18

OUR HEALTHIER NATION

Age Standardised Mortality Rates – Stroke Persons Aged Under 65



Source: Compendium of Clinical and Health Indicators Dec 2006

Deaths from stroke in persons aged under 65 (ICD10 I60-I69, ICD9 430-438 adjusted)

	1993	1994	1995	1996	1997	1998	1999	2000	2001	2002	2003	2004	2005
Number of Deaths in Walsall	26	34	36	33	30	30	31	29	27	28	21	23	26

Age Standardised Mortality Rate per 100,000 Population Aged Under 65 Years

	1995-97 (Baseline)	2003-05	Cumulative % Reduction	Progress: Annual Lives Saved
PERSONS:				
Walsall	14.62	10.25	-29.8	10
West Midlands	12.1	8.84	-26.9	
England	11.1	7.97	-28.2	
MALES:				
Walsall	17.84	13.09	-26.6	5
West Midlands	13.84	10.39	-24.9	
England	12.73	9.06	-28.8	
FEMALES:				
Walsall	11.42	7.44	-34.8	5
West Midlands	10.37	7.31	-29.5	
England	9.58	6.91	-27.9	

Note: Male + Female 'lives saved' may not add to Persons 'lives saved' due to rounding

3.4 STROKE – PERSONS AGED 65-74

National Target

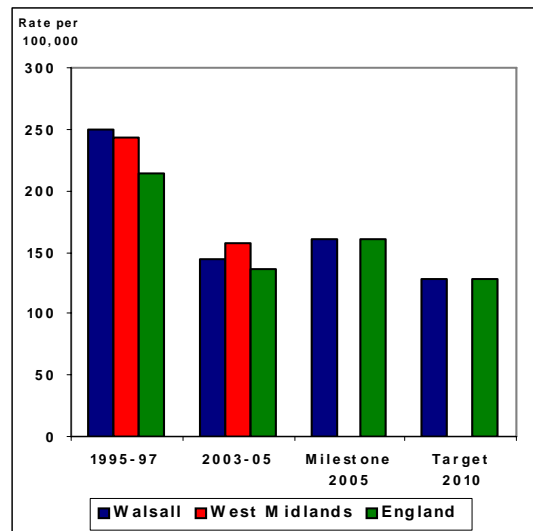
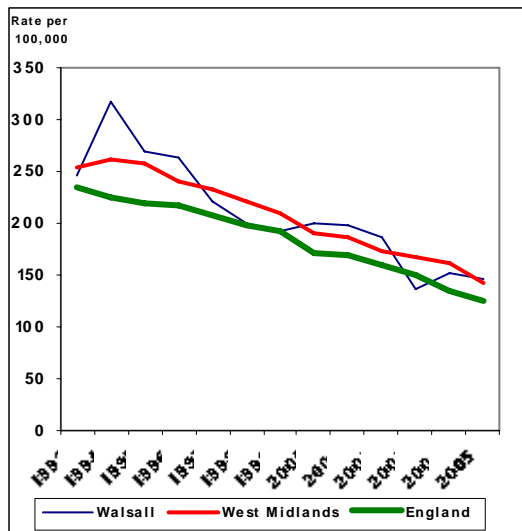
To reduce the death rate by at least 40% by 2010 (Milestone 25% reduction by 2005).

WALSALL'S TARGET

BY YEAR	% REDUCTION	RATE (PER 100000)	ANNUAL LIVES SAVED
2005	35.7	161.0	21
2010	48.5	128.8	29

OUR HEALTHIER NATION

Age Standardised Mortality Rates – Stroke Persons Aged 65-74



Source: Compendium of Clinical and Health Indicators Dec 2006

Deaths from stroke in persons aged 65-74 (ICD10 I60-I69, ICD9 430-438 adjusted)

	1993	1994	1995	1996	1997	1998	1999	2000	2001	2002	2003	2004	2005
Number of Deaths in Walsall	58	76	63	64	53	48	46	48	47	44	33	37	35

Age Standardised Mortality Rate per 100,000 Population Aged 65-74 Years

	1995-97 (Baseline)	2003-05	Cumulative Progress: % Reduction	Annual Lives Saved
PERSONS:				
Walsall	250.2	144.5	-42.2	26
West Midlands	243.2	157.1	-35.3	
England	214.6	136.7	-36.3	
MALES:				
Walsall	277.6	191.2	-31.1	9
West Midlands	288.7	188.1	-34.8	
England	250.5	158.1	-36.9	
FEMALES:				
Walsall	225.2	102.6	-54.4	17
West Midlands	204.3	129.1	-36.6	
England	184.5	117.6	-36.2	

Note: Male + Female 'lives saved' may not add to Persons 'lives saved' due to rounding

4. SAVING LIVES – CANCER

National Target

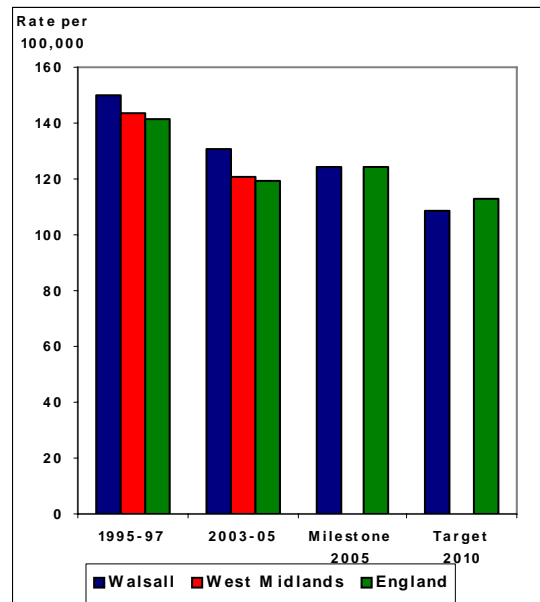
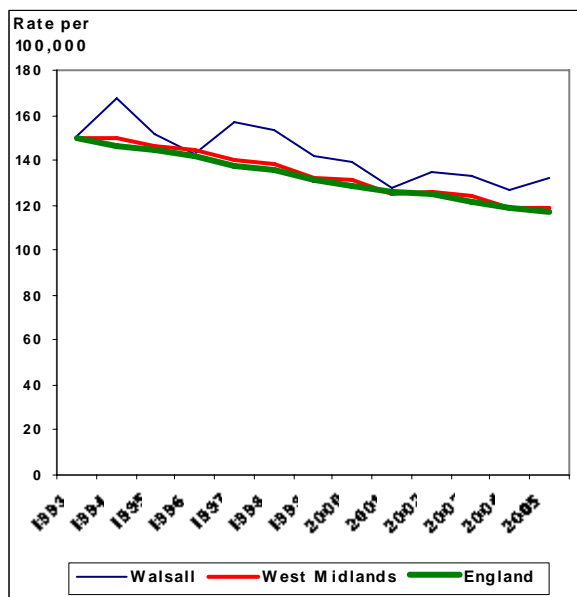
To reduce the death rate in people under 75 by at least 20% by 2010 (Milestone 12% reduction by 2005).

WALSALL'S LDP ('SPEARHEAD') TARGET

BY YEAR	% REDUCTION	RATE (PER 100000)	ANNUAL LIVES SAVED
2005	-17.5	124.0	74
2010	-27.5	108.9	115

OUR HEALTHIER NATION

Age Standardised Mortality Rates from All Cancers Persons Aged Under 75



Source: Compendium of Clinical and Health Indicators Dec 2006

Deaths from cancer in persons aged under 75 (ICD10 C00-C97)

	1993	1994	1995	1996	1997	1998	1999	2000	2001	2002	2003	2004	2005
Number of Deaths in Walsall	430	477	424	399	441	429	401	395	358	375	378	358	377

Age Standardised Mortality Rate per 100,000 Population Aged Under 75 Years

	1995-97 (Baseline)	2003-05	Cumulative Progress: % Reduction	Annual Lives Saved
PERSONS:				
Walsall	150.3	130.8	-13.0	50
West Midlands	143.4	120.7	-15.8	
England	141.2	119.0	-15.7	
MALES:				
Walsall	179.0	151.7	-15.2	33
West Midlands	164.3	137.0	-16.6	
England	160.8	132.6	-17.5	
FEMALES:				
Walsall	124.9	111.3	-10.9	15
West Midlands	125.2	105.8	-15.5	
England	124.5	106.6	-14.4	

Note: Male + Female 'lives saved' may not add to Persons 'lives saved' due to rounding

Sections 4.1 to 4.2 below indicate progress against local targets for reducing deaths from lung cancer in persons under 75, and breast cancer in women aged 50-69.

4.1 LUNG CANCER – PERSONS UNDER 75

National Target

To reduce the death rate from lung cancer in people under 75 by 20% by 2010 (Milestone 12% reduction by 2005).

WALSALL'S TARGET (PERSONS)			
BY YEAR	% REDUCTION	RATE (PER 100000)	ANNUAL LIVES SAVED
2005	-23.1	29.7	25
2010	-30.1	27.0	33

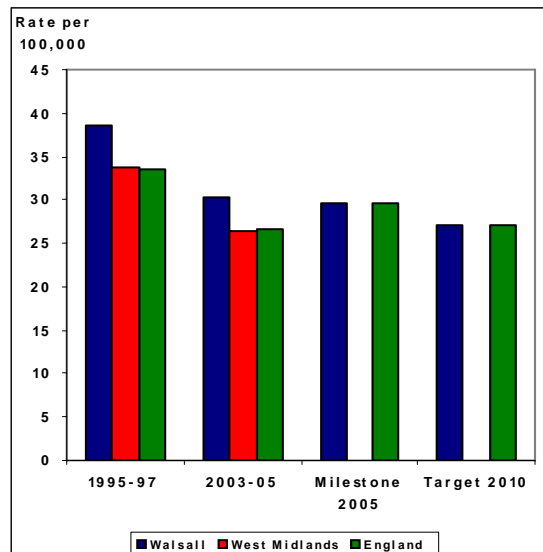
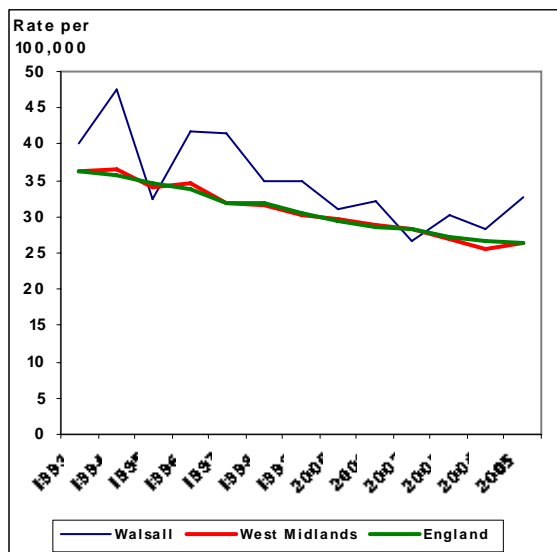
Walsall targets by gender are:

Males: reduce the death rate from lung cancer in under 75s by 34.5% by 2010 (to 37.1 per 100,000).

Females: reduce the death rate from lung cancer in under 75s by 19% by year 2010 (to 17.8 per 100,000).

OUR HEALTHIER NATION

Age Standardised Mortality Rates from Lung Cancer Persons Aged Under 75



Source: Compendium of Clinical and Health Indicators Dec 2006

Deaths from lung cancer in persons aged under 75 (ICD10 C33-34, ICD9 162 adjusted)

	1993	1994	1995	1996	1997	1998	1999	2000	2001	2002	2003	2004	2005
Number of Deaths in Walsall	118	136	95	116	118	101	101	90	92	77	86	82	94

Age Standardised Mortality Rate per 100,000 Population Aged Under 75 Years

	1995-97 (Baseline)	2003-05	Cumulative Progress: % Reduction	Annual Lives Saved
PERSONS:				
Walsall	38.6	30.4	-21.2	22
West Midlands	33.7	26.3	-22.0	
England	33.6	26.7	-20.5	
MALES:				
Walsall	56.8	39.2	-31.0	22
West Midlands	47.8	35.1	-26.5	
England	46.3	33.8	-27.0	
FEMALES:				
Walsall	21.8	22.1	+1.4	Nil
West Midlands	20.7	18.1	-12.5	
England	22.3	20.1	-9.9	

Note: Male + Female 'lives saved' may not add to Persons 'lives saved' due to rounding

4.2 BREAST CANCER – FEMALES AGED 50 - 69

National Target

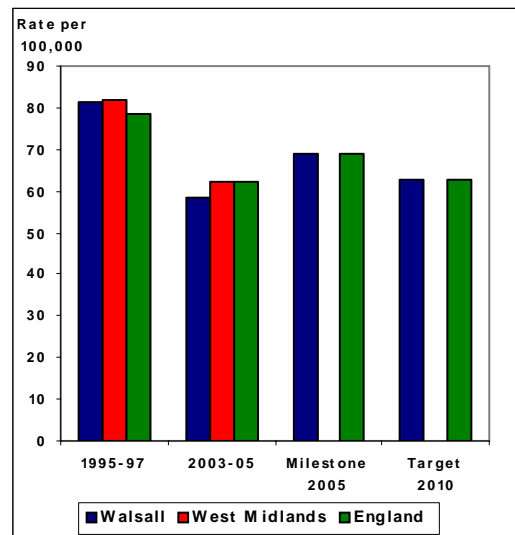
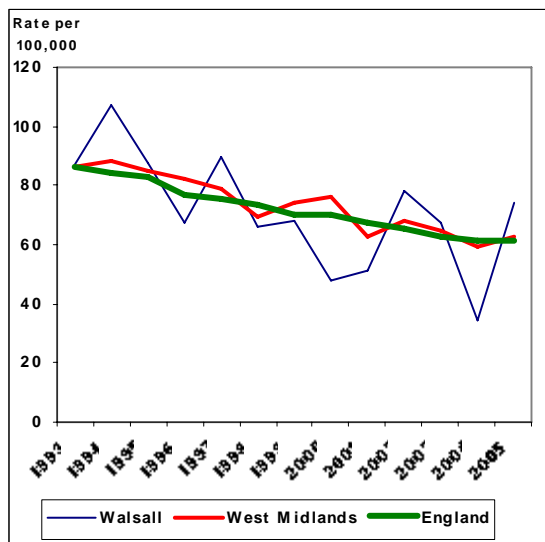
To reduce the death rate from breast cancer in women aged 50-69 by 20% by 2010 (Milestone 12% reduction by 2005).

WALSALL'S TARGET

BY YEAR	% REDUCTION	RATE (PER 100000)	ANNUAL LIVES SAVED
2005	-15.2	69.1	4
2010	-22.9	62.8	6

OUR HEALTHIER NATION

Age Standardised Mortality Rates from Breast Cancer Females Aged 50 – 69



Source: Compendium of Clinical and Health Indicators Dec 2006

Deaths from breast cancer in women aged 50-69 (ICD10 C50 ICD9 174 adjusted)

	1993	1994	1995	1996	1997	1998	1999	2000	2001	2002	2003	2004	2005
Number of Deaths in Walsall	25	32	27	20	27	20	20	14	15	23	21	11	23

Age Standardised Mortality Rate per 100,000 in Female Population Aged 50-69 Years

	1995-97 (Baseline)	2003-05	Cumulative % Reduction	Progress: Annual Lives Saved
PERSONS:				
Walsall				
West Midlands				
England				
MALES:				
Walsall				
West Midlands				
England				
FEMALES:				
Walsall	81.5	58.6	-28.1	6
West Midlands	81.8	62.2	-24.0	
England	78.5	62.0	-21.0	

5. SAVING LIVES – MENTAL HEALTH

National Target

To reduce the death rate from suicide and undetermined injury in people of all ages by at least 20% by 2010 (Milestone 12% reduction by 2005).

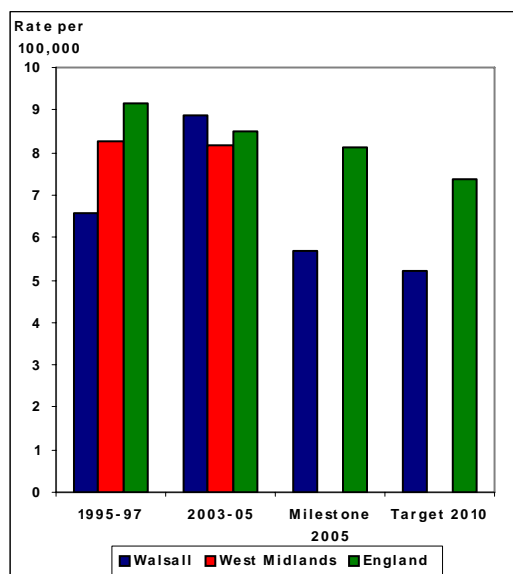
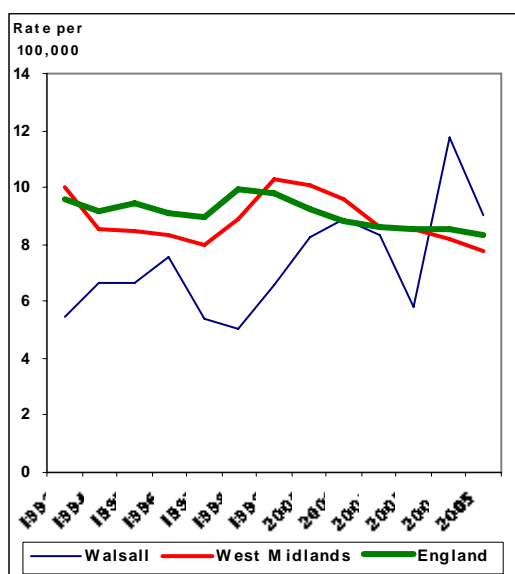
This headline target is used as a crude proxy for mental health.

In the 1995-97 baseline period, Walsall's mortality rate was well below the regional and national average and was already below the national target rate for 2010. The Walsall target (in the table below) was therefore set to achieve a further 20% reduction by 2010. (The LDP / Spearhead target for Walsall, set by the Birmingham and Black Country Strategic Health Authority, took into account the higher mortality rates in 2001/02 and set a less demanding rate of 7.3 per 100000 by 2010. However, for Walsall this would imply a *higher* suicide rate than in the Our Healthier Nation baseline period of 1995-97.)

WALSALL'S TARGET			
BY YEAR	% REDUCTION	RATE (PER 100000)	ANNUAL LIVES SAVED
2005	-12.0	5.7	2
2010	-20.0	5.2	3

OUR HEALTHIER NATION

Age Standardised Mortality Rates from Suicide and Undetermined Injury Persons All Ages



Source: Compendium of Clinical and Health indicators Dec 2006

Deaths from suicide and undetermined injury, all ages (ICD10 X60-X84, Y10-Y34 exc Y33.9; ICD9 E950-95 and E980-989 excluding E988.8)

	1993	1994	1995	1996	1997	1998	1999	2000	2001	2002	2003	2004	2005
Number of Deaths in Walsall	14	18	18	20	14	13	16	21	22	20	14	30	22

Age Standardised Mortality Rate per 100,000 Population, All Ages

	1995-97 (Baseline)	2003-05	Cumulative Progress: % Reduction	Annual Lives Saved
PERSONS:				
Walsall	6.55	8.87	+35.4	+5*
West Midlands	8.26	8.17	-1.1	
England	9.16	8.48	-7.4	
MALES:				
Walsall	8.66	11.87	+37.1	+4*
West Midlands	12.76	12.38	-3.0	
England	14.10	12.86	-8.7	
FEMALES:				
Walsall	4.60	6.05	+31.5	+1*
West Midlands	3.90	4.1	+5.0	
England	4.47	4.28	-4.2	

Note: Male + Female 'lives saved' may not add to Persons 'lives saved' due to rounding

* increase in deaths

6. SAVING LIVES – ACCIDENTS

6.1 Mortality Target for Accidents

National Target

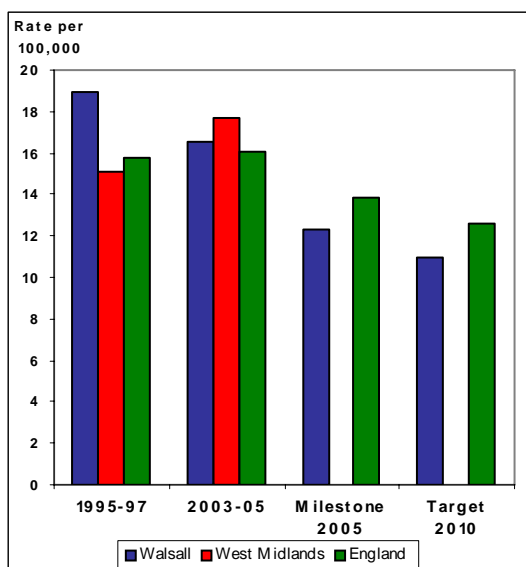
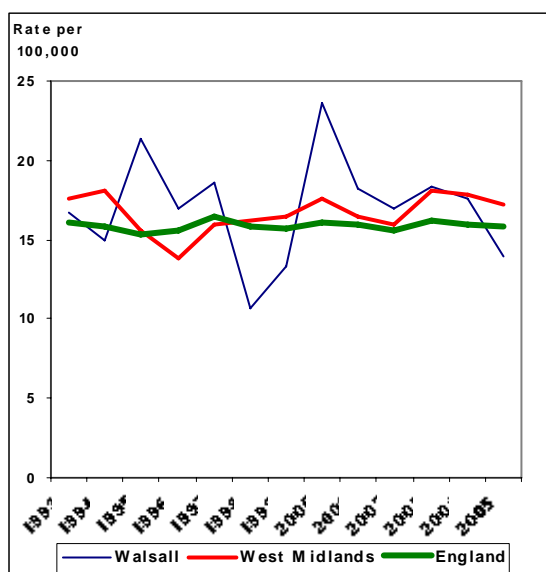
To reduce the death rate from accidents by at least 20% by 2010 (Milestone 12% reduction by 2005)

In previous years standardised mortality rates for accidents (all ages) were unavailable for the 1995-97 baseline period and consequently local targets were initially set using the crude number of deaths. However, as standardised rates are now available, the local targets and monitoring has been re-based onto a standardised mortality rate basis, as in other sections of the report. A further complication in setting a local target was that there had been a notable peak in Walsall deaths from accidents in 1995 followed by a sustained substantial decrease from this peak in subsequent years to 1999. This meant that the national target % reduction from 1995-97 baseline had already been achieved in Walsall by 1997-99. The Walsall target for 2010 was therefore set as a further 20% reduction in deaths from 1997-99 average, equivalent to a 41.7% reduction from the 1995-97 OHN baseline period.

WALSALL'S TARGET			
BY YEAR	% REDUCTION	RATE (PER 100000)	ANNUAL LIVES SAVED
2005	-35.0	12.3	20
2010	-41.7	11.0	24

OUR HEALTHIER NATION

Age Standardised Mortality Rates for Accidents Persons All Ages



Source: Compendium of Clinical and Health Indicators Dec 2006

Number of Deaths from Accidents (ICD10 V01-X59, ICD9 E800-928, excl E870-E879)

	1993	1994	1995	1996	1997	1998	1999	2000	2001	2002	2003	2004	2005
Number of Deaths in Walsall													
Under 65	30	23	27	21	27	14	19	39	30	22	20	20	23
Over 65	18	20	35	33	29	21	22	31	21	30	43	40	21
Total	48	43	62	54	56	35	41	70	51	52	63	60	44

Age Standardised Mortality Rate per 100,000 Population, All Ages

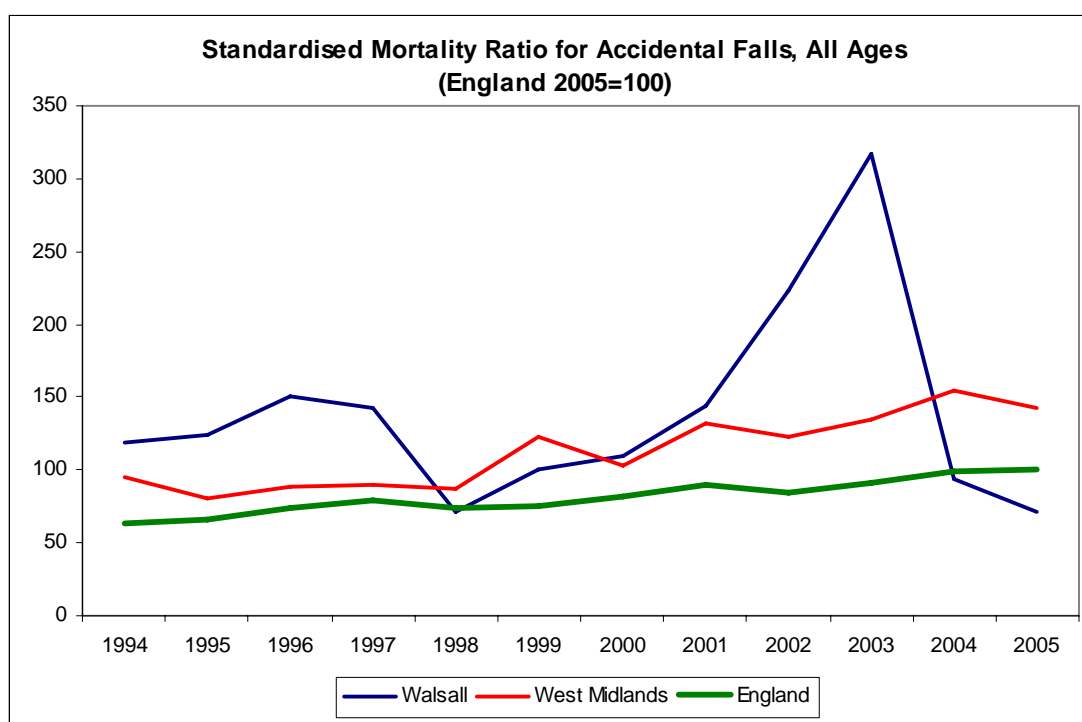
	1995-97 (Baseline)	2003-05	Cumulative % Reduction	Progress: Annual Lives Saved
PERSONS:				
Walsall	18.97	16.58	-12.6	2
West Midlands	15.14	17.74	+17.2	
England	15.77	16.01	+1.5	
MALES:				
Walsall	23.93	22.55	-5.8	2*
West Midlands	20.76	23.41	+12.8	
England	21.75	21.46	-1.3	
FEMALES:				
Walsall	14.39	10.40	-27.7	3
West Midlands	9.59	12.00	+25.1	
England	9.94	10.59	+6.5	

Note: Male + Female 'lives saved' may not add to Persons 'lives saved' due to rounding

* increase in deaths

6.2 Mortality from Accidental Falls

Deaths from falls have shown substantial year to year fluctuations. In the last decade a peak was reached in 2003, when these deaths rose to 43. However, deaths from falls fell substantially in 2004 and showed a further reduction in 2005, when there were 10 deaths. The standardised mortality ratio for accidental falls over the period 1993-2005 is illustrated below. In 2005, the Walsall rate was substantially below both the West Midlands average and the national rate.



Because of the peak in 2003, the accidental falls age specific death rates for Walsall for the period 2003-05 remain higher than the national averages.

Age specific mortality rates (persons) for accidental falls 2003-2005 (ICD10 W00-W19)

	Age Group		
	All ages	65-74 yrs	75+
Walsall	5.8	8.5	77.6
West Midlands	5.1	12.1	75.1
England	3.6	8.1	46.5

Source: Compendium of Clinical and Health Indicators Dec 2006

6.3 Serious Injury Target

National Target

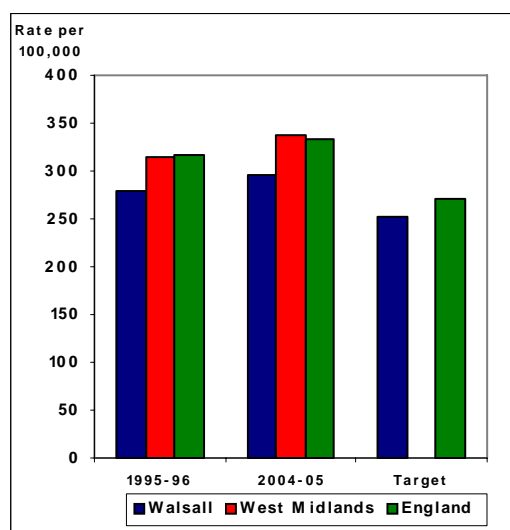
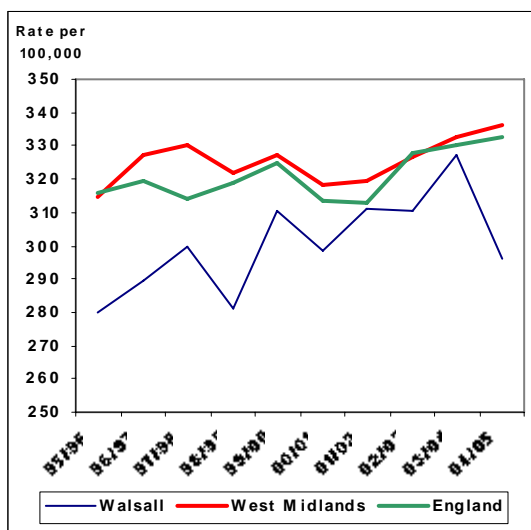
To reduce serious injury from accidents by at least 10% by 2010

The serious injury target relates to accidental injuries requiring a hospital stay of more than 3 days. When considering a local target, it was noted that the serious injury rate in Walsall was already below the national and regional rate in 1995/6 (baseline year) and would require only a 2.4% reduction to achieve the national target rate for 2010. The local target set was therefore to achieve a further 10% reduction by 2010 from the 1995/6 baseline.

WALSALL'S TARGET			
BY YEAR	% REDUCTION	RATE (PER 100000)	REDUCTION IN HOSPITAL EPISODES
2010	-10.0	251.6	85

OUR HEALTHIER NATION

Serious Accidental Injury Resulting in Hospital Admission Age Standardised Rates - Persons All Ages



Source: Compendium of Clinical and Health Indicators Dec 2006

**Age Standardised Rate per 100,000 Population for Hospital Episodes:
Serious Accidental Injury Resulting in Hospital Admission**

	1995-96 (Baseline)	2004-05	Cumulative % Reduction	Progress: Annual Reduction In Hospital Episodes
PERSONS:				
Walsall	279.8	296.0	+5.6	+107*
West Midlands	314.8	336.5	+6.9	
England	315.9	332.4	+5.2	
MALES:				
Walsall	273.7	316.1	+15.5	+79*
West Midlands	313.5	338.0	+7.8	
England	310.1	328.3	+5.9	
FEMALES:				
Walsall	267.8	265.6	-0.8	+25*
West Midlands	297.1	317.9	+7.0	
England	295.9	318.8	+7.7	

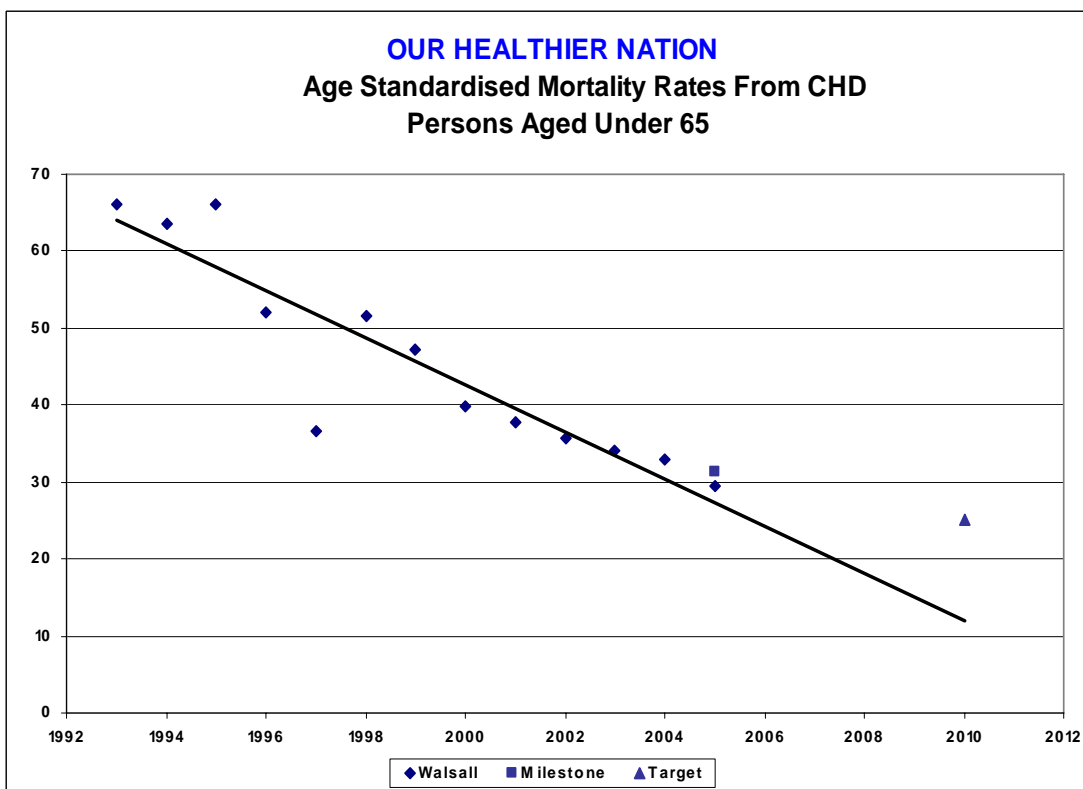
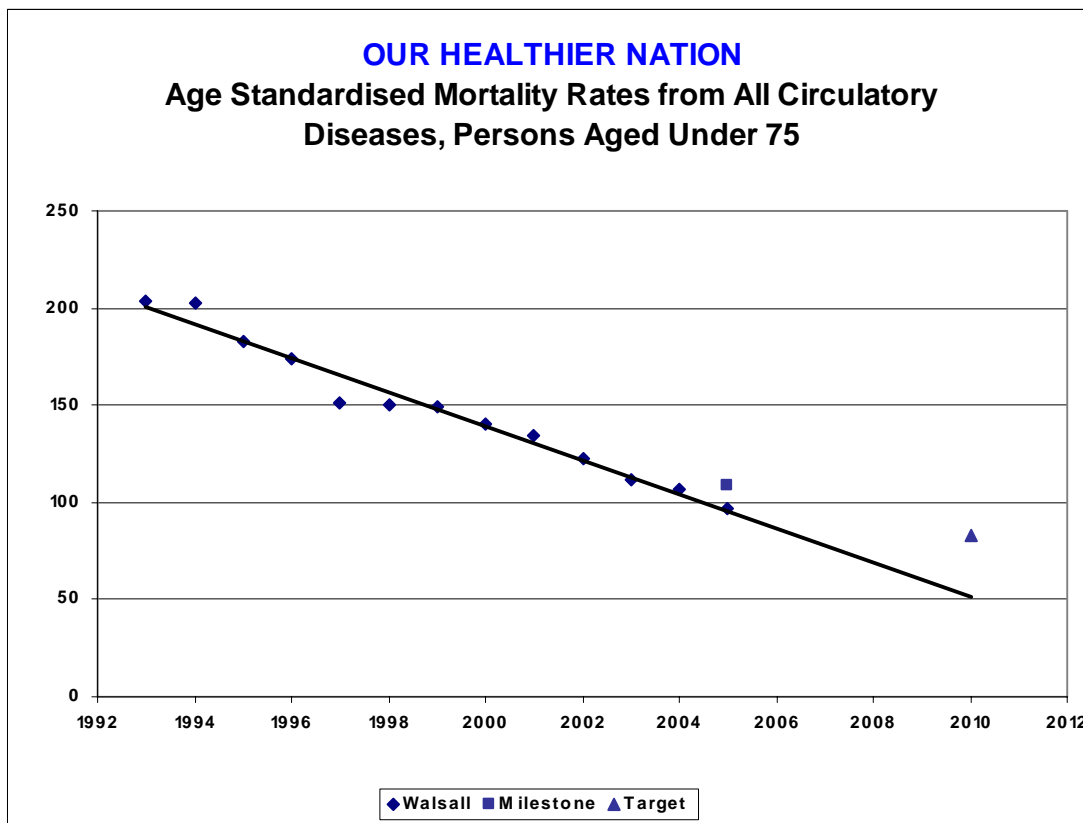
*increase in hospital episodes

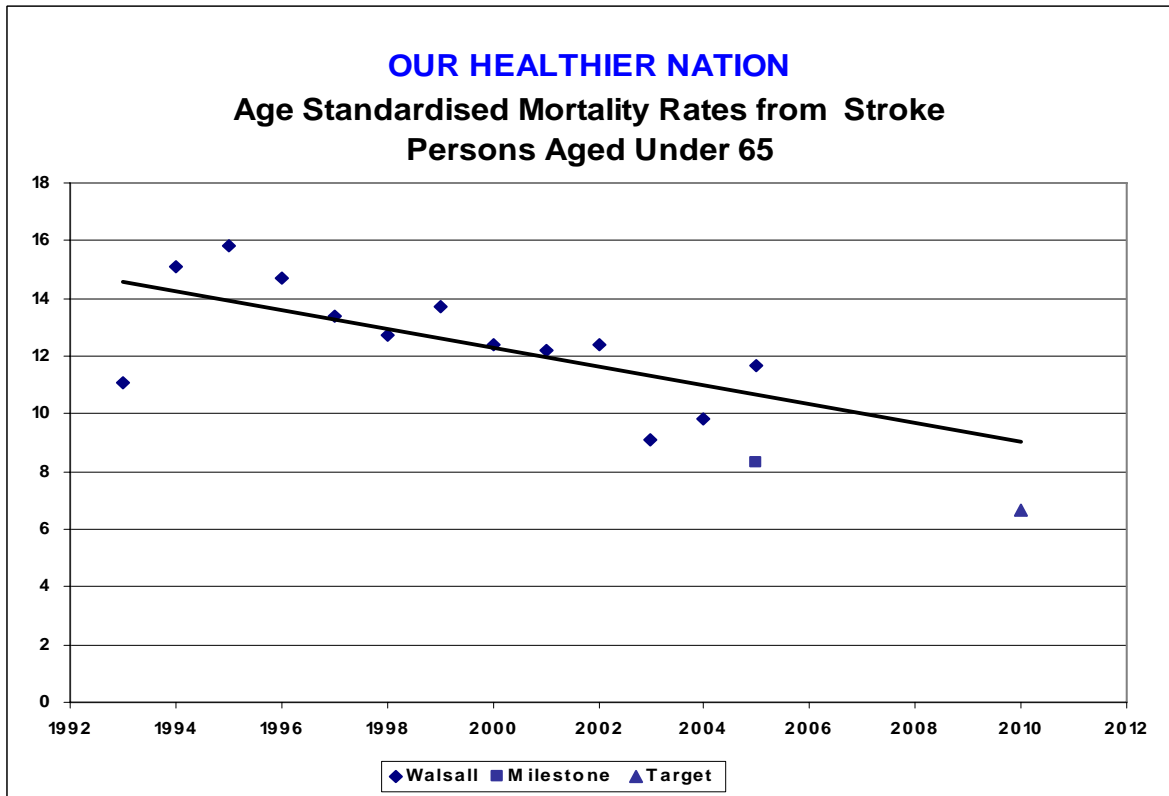
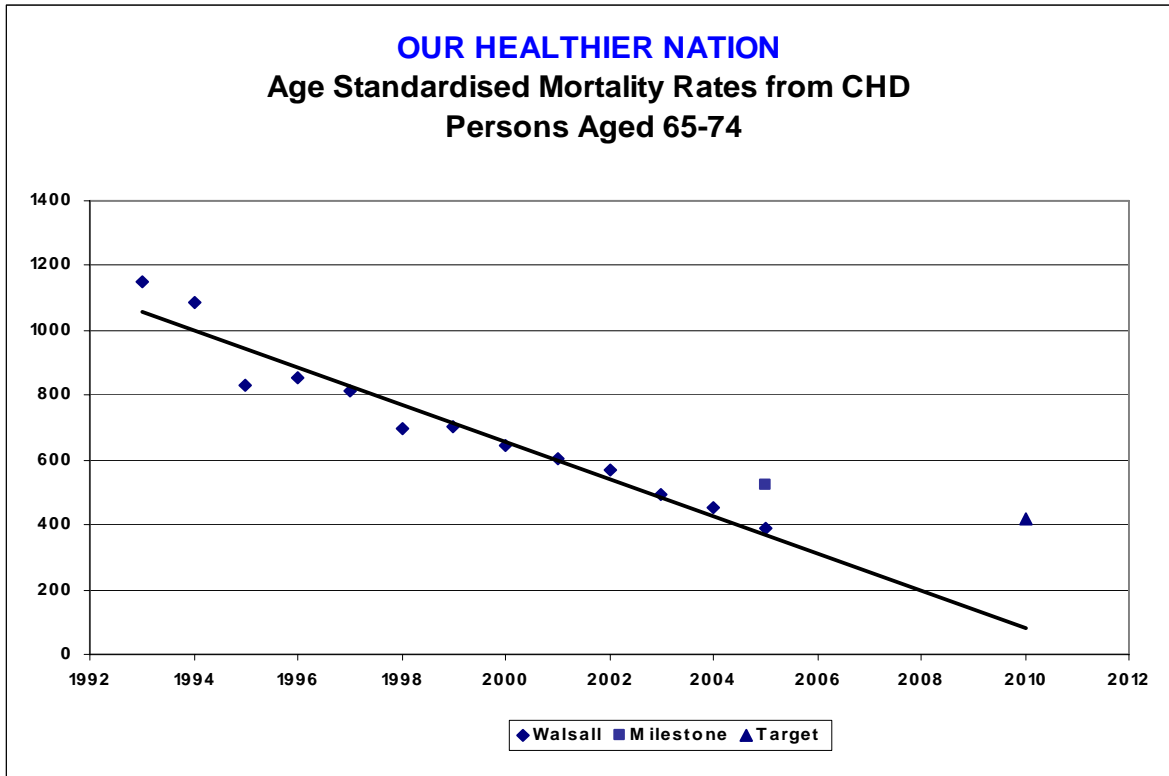
Note: Figures for 'persons' includes cases with sex unknown; male total plus female total therefore does not add to persons total.

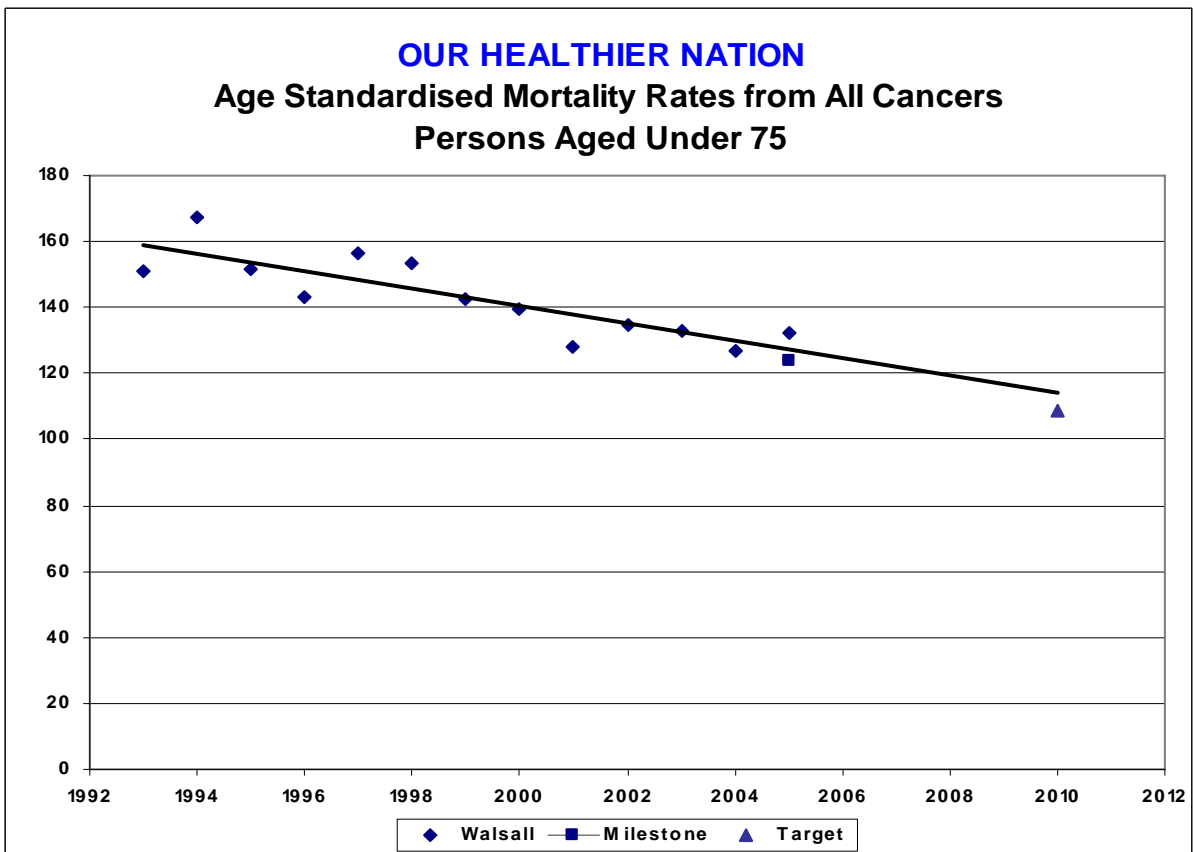
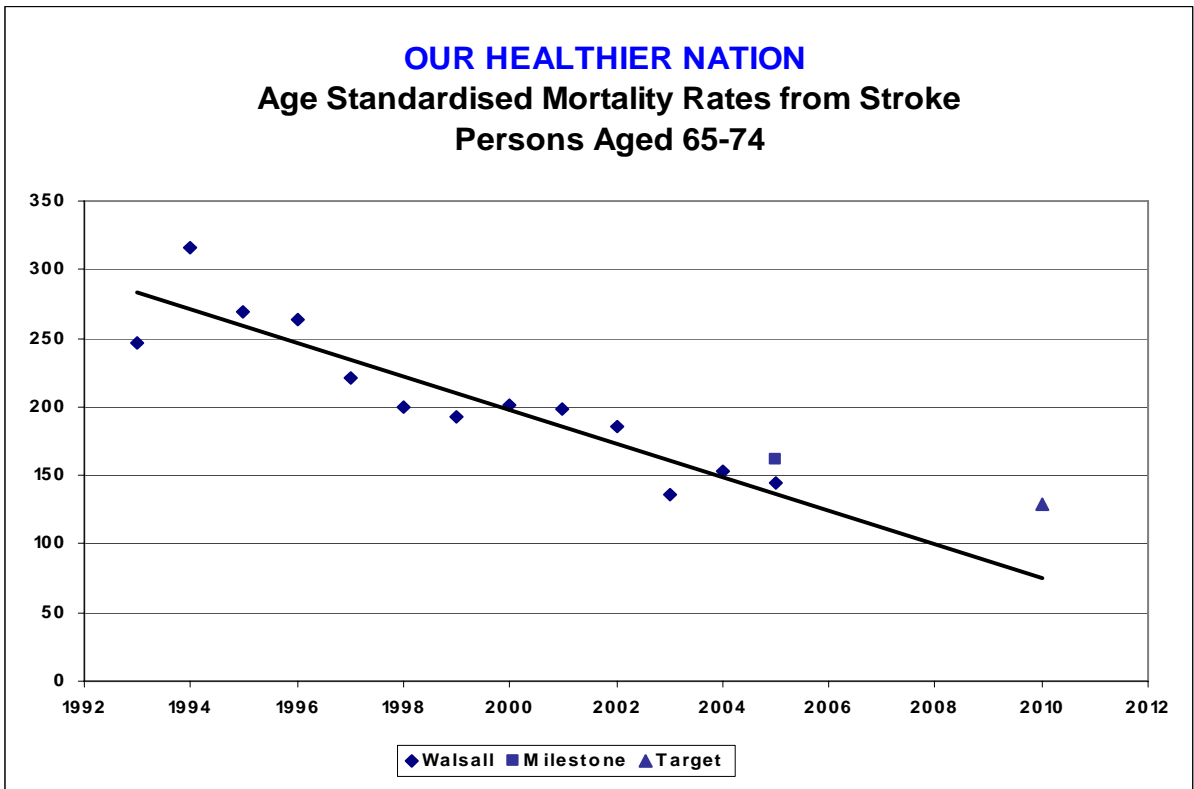
APPENDIX 1

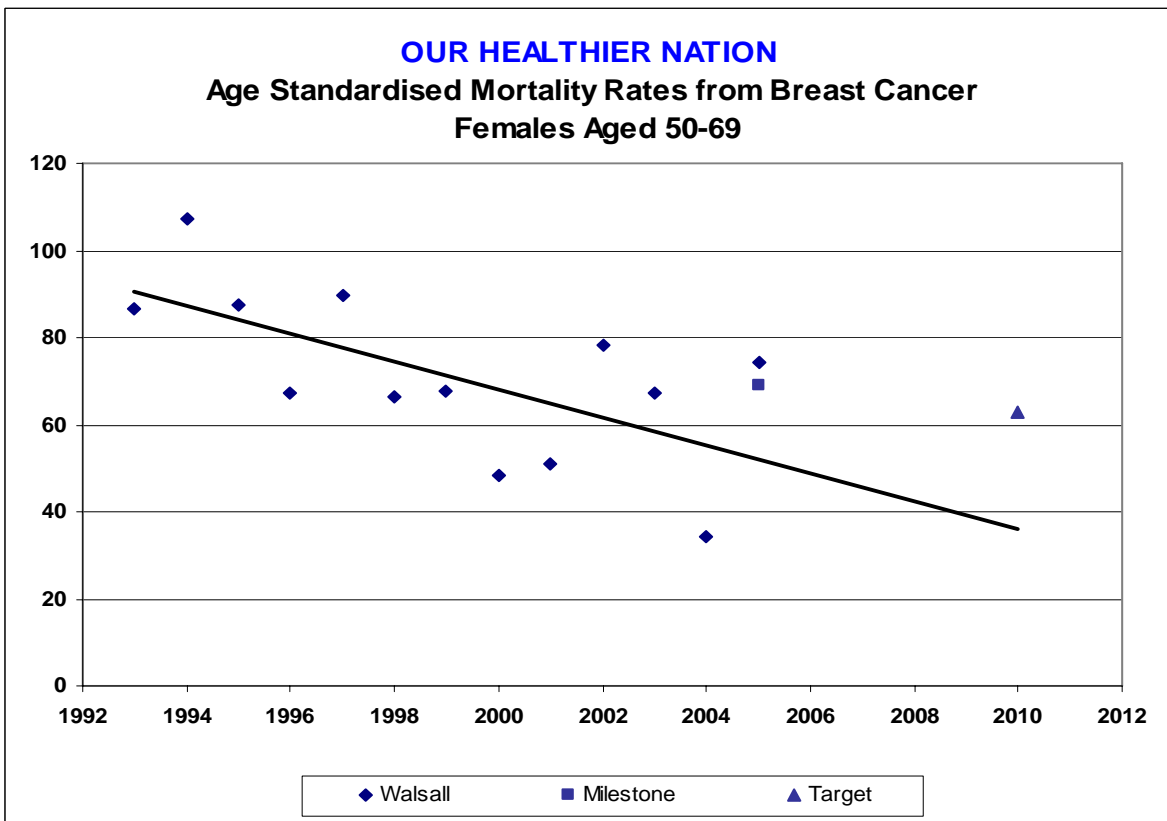
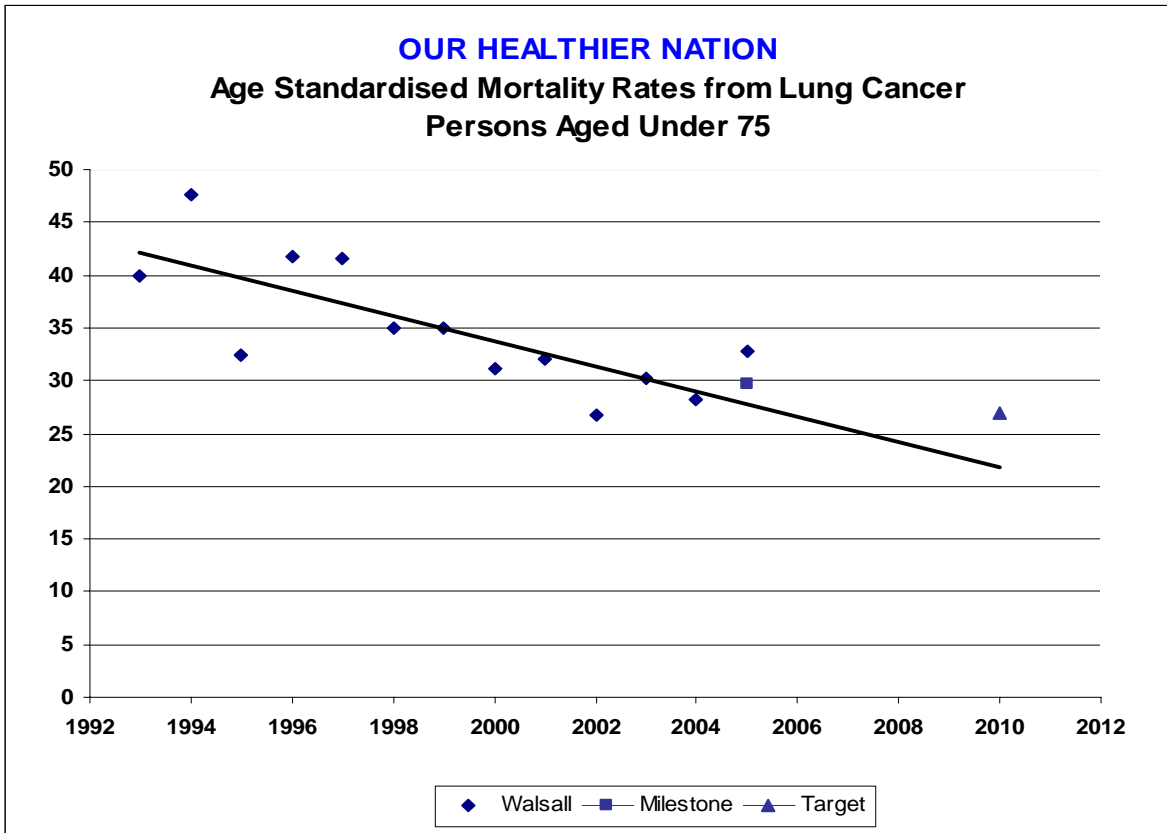
WALSALL MONITORING DATA FROM 1993 TO 2005 AND LINEAR EXTRAPOLATION TO 2010

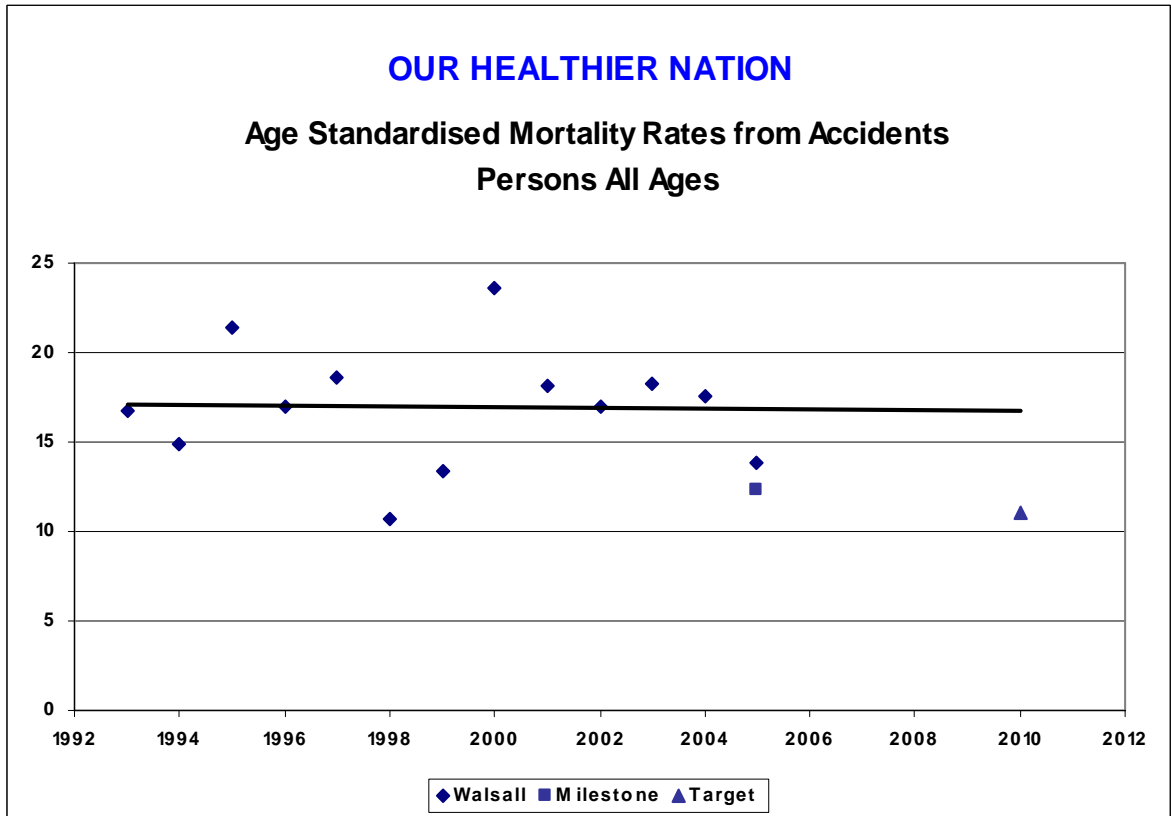
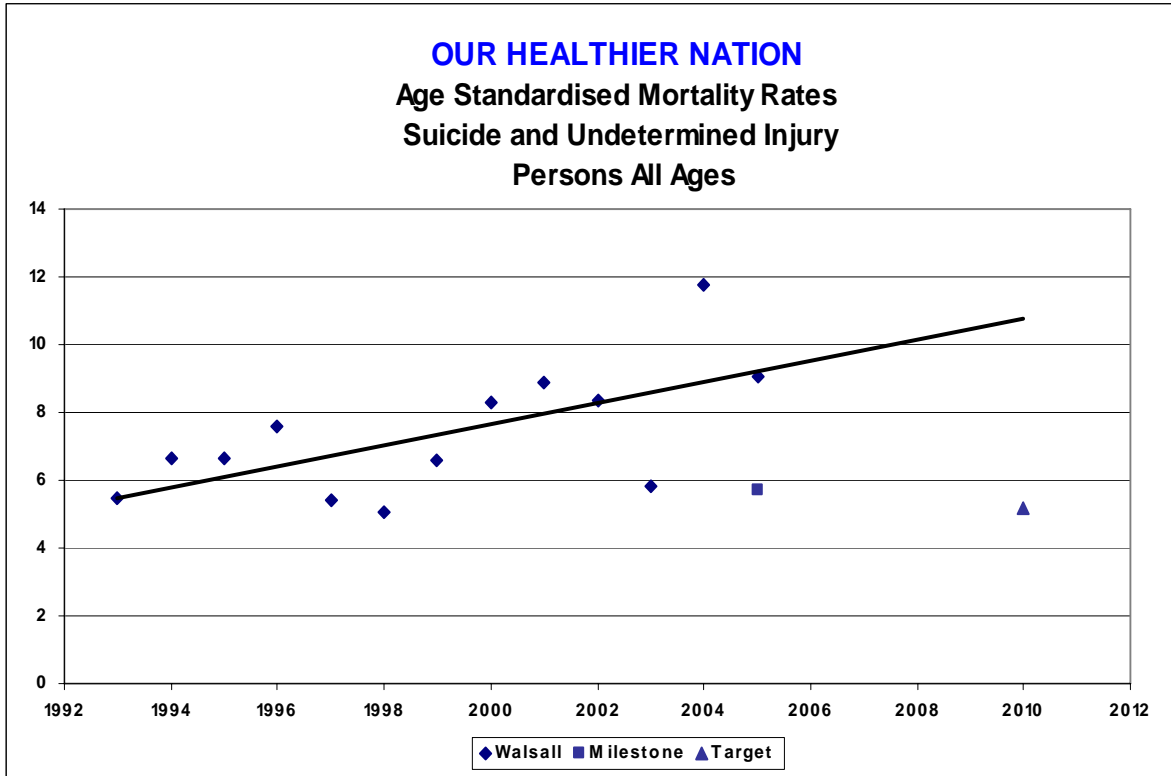
All rates displayed in the charts below are per 100,000 population











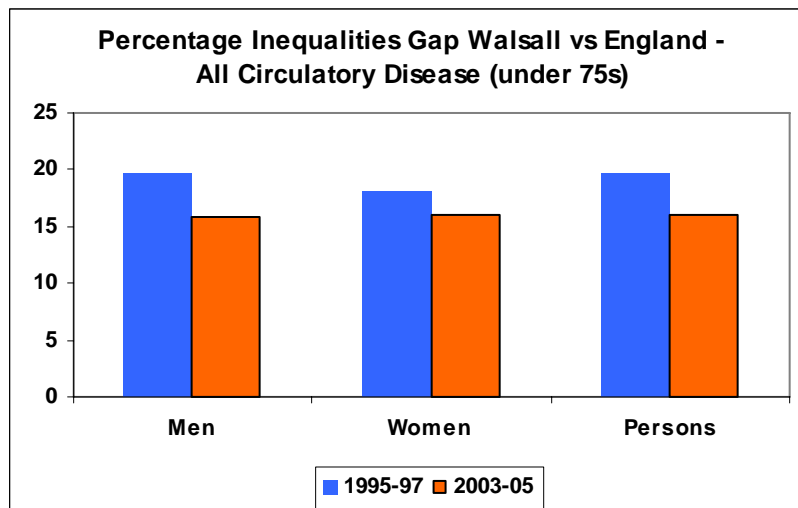
APPENDIX 2

WALSALL PROGRESS IN TACKLING INEQUALITIES THROUGH OUR HEALTHIER NATION TARGET AREAS

The charts in this Appendix illustrate Walsall's progress in reducing health inequalities in each of the OHN target areas relative to the national average rate. The charts show the percentage difference between the Walsall rate and the rate for England in the baseline period and in 2003-05. The differences (inequality gaps) are derived from the data tables in the main body of the report. Each section of the Appendix should be read in conjunction with the respective section in the main body of the report.

In most (but not all) areas covered in this report, Walsall rates were higher than national rates in the 1995-97 baseline period. The inequalities gap will have therefore reduced if Walsall rates have fallen faster than national rates over the period to 2003-05 and vice –versa. In isolated cases, an increase in the national rate not matched by an increase in Walsall rates may also reduce the inequality gap – this is the situation in relation to accident mortality rates.

All Circulatory Disease Mortality (under 75s) - Inequalities Gap

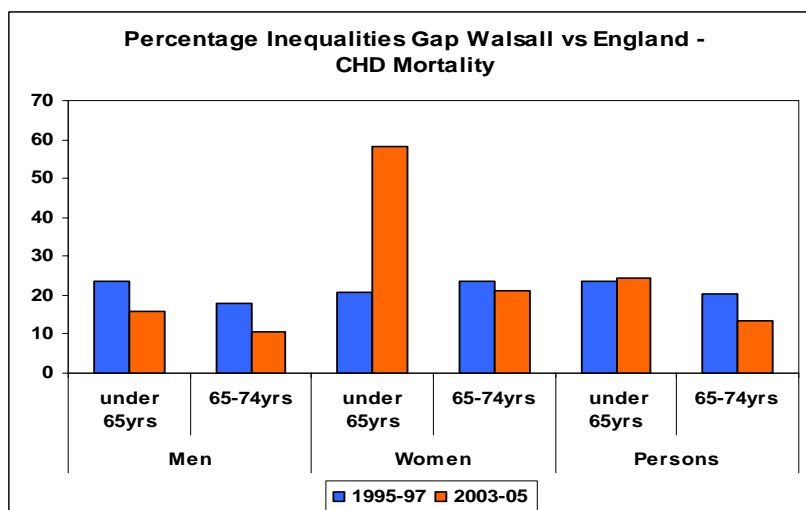


The inequalities gap has reduced for men and women in Walsall

In 2003-05, the all circulatory disease mortality rate in Walsall remained 16% above the national average but was 20% above the national rate in 1995-97.

CHD and stroke are considered separately below.

Coronary Heart Disease Mortality - Inequalities Gap

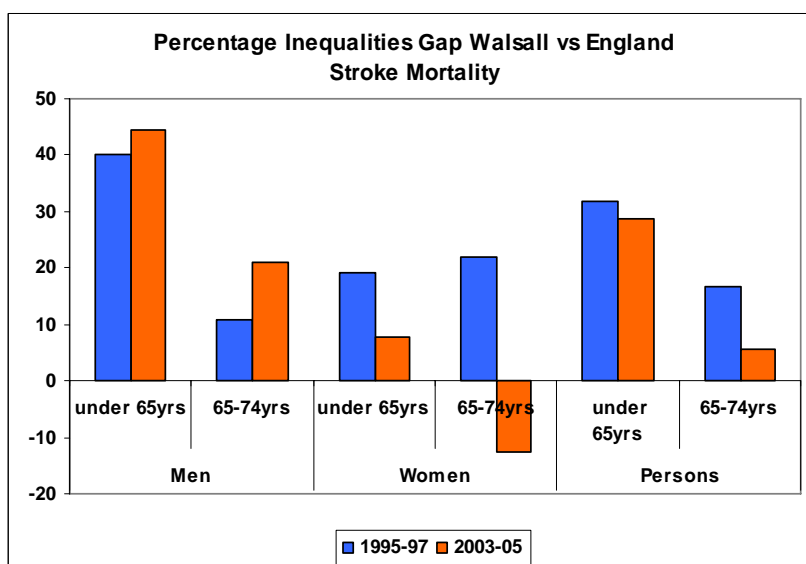


The inequalities gap for men in Walsall has reduced in both the under 65 and 65-74 age groups.

However, for Walsall women the inequalities gap has widened among the under 65s where the rate in 2003-5 was over 58% higher than nationally. This is because the national mortality rate has fallen faster than the Walsall rate.

Overall, the gap among under 65s remains little changed (at 24% above the national rate) but among 65-74 year olds the gap has reduced from 20% to 14% above the national rate.

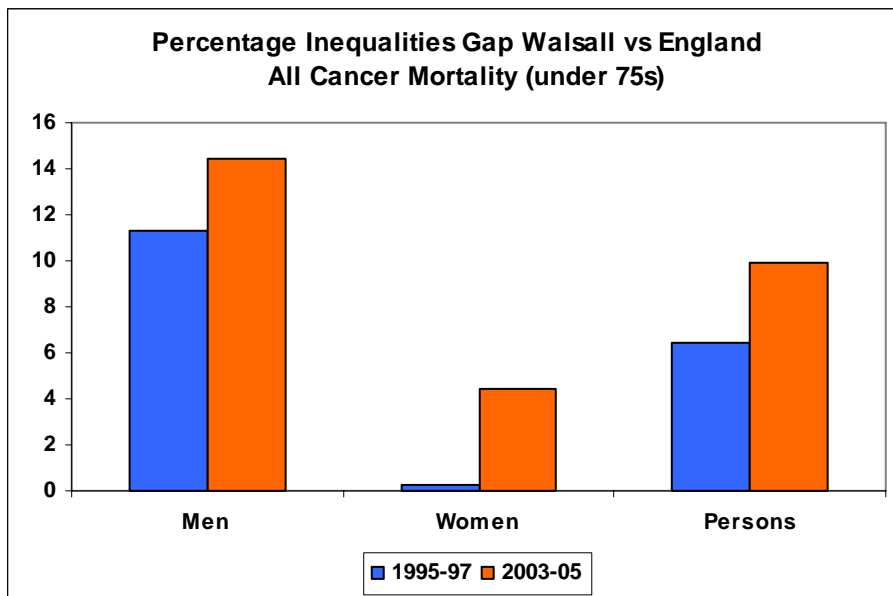
Stroke Mortality - Inequalities Gap



Stroke mortality rates in the under 65s is much lower than in older groups both nationally and in Walsall (see sections 3.3 and 3.4). For men under 65 the gap has widened and was 44% higher than the national rate in 2003-05, whilst for Walsall women under 65 the gap had reduced to 8%.

For the older age group, the inequalities gap has increased among Walsall men but among women in Walsall the stroke mortality rate had fallen to 13% below the national rate.

All Cancers Mortality Rate (under 75s) - Inequalities Gap

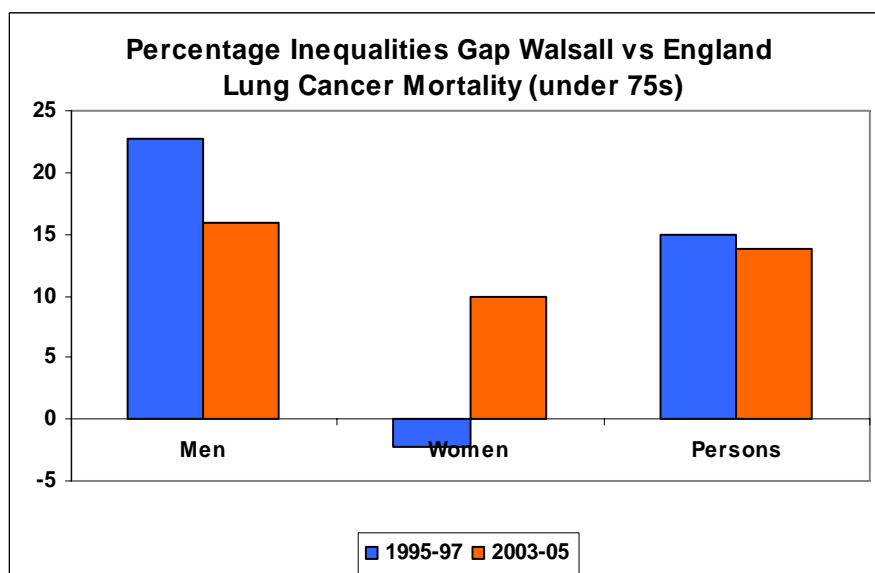


The all cancer mortality inequalities gap has increased for both men and women in Walsall.

In 1995-97 the rate for women under 75 in Walsall was very close to the national rate but in 2003-05 the rate was 4% higher than the national rate. This is because the Walsall rate has fallen more slowly than the national rate.

For men in Walsall, the rate has increased to 14% higher than the national rate in 2003-05.

Lung Cancer Mortality Rate (under 75s) – Inequalities Gap

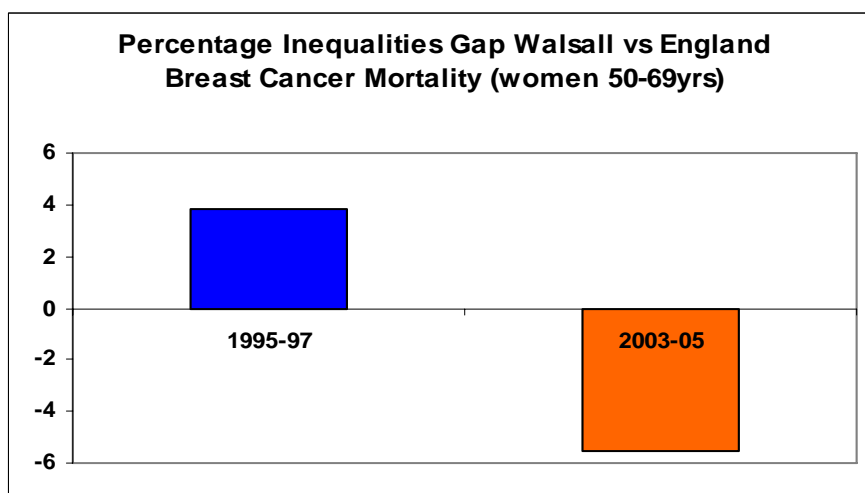


The lung cancer mortality rate inequality gap for men in Walsall has reduced but remains 14% above the national rate.

For women the Walsall rate was marginally lower than the national rate in 1995-97 but is now 10% higher. This is because the Walsall rate has marginally increased since 1995-97 whereas the national rate has fallen by 10%.

In absolute terms lung cancer mortality rates are much lower for women than men (see section 4.1)

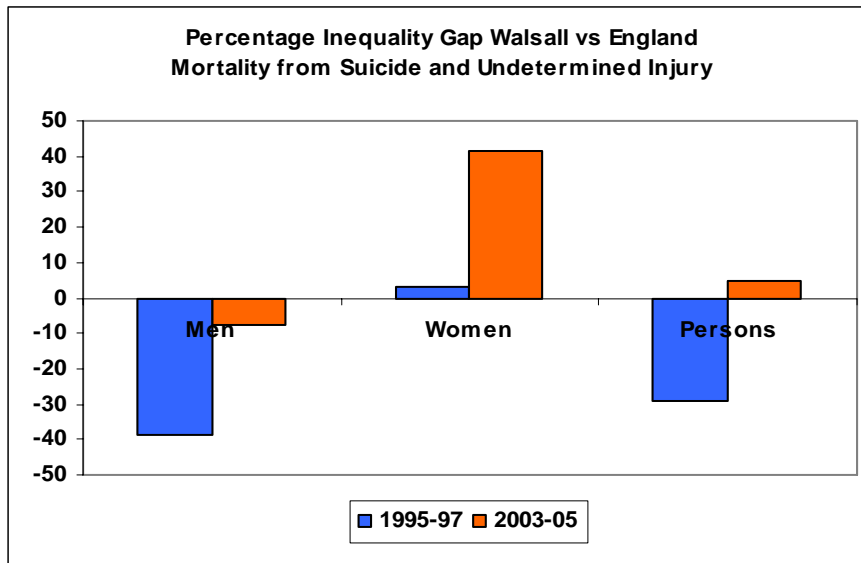
Breast Cancer Mortality Rate (women aged 50-69) – Inequalities Gap



Walsall's excess breast cancer mortality rate in 1995-97 among women of screening age has been reversed during 2003-5.

In the latter period, the Walsall rate was 5% lower than the national rate.

Suicide and Undetermined Injury Mortality Rate – Inequalities Gap

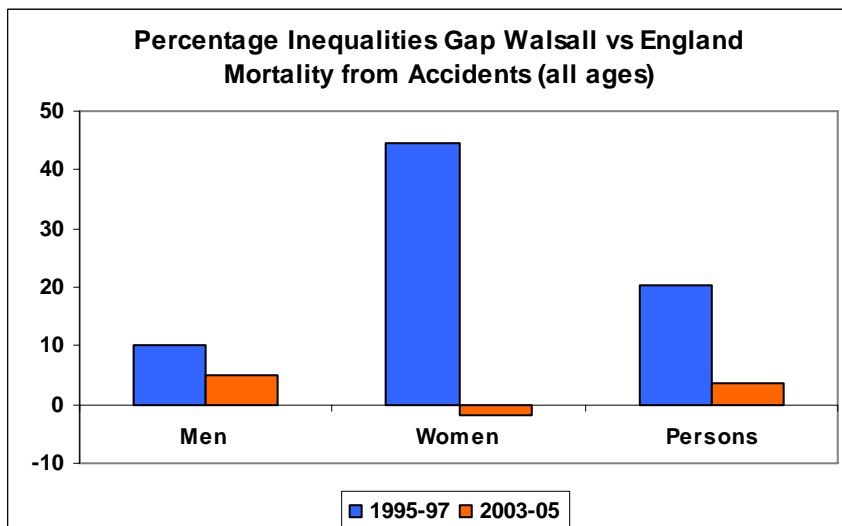


In 1995-97, Walsall had a 'favourable' inequalities gap for suicide among men. Subsequently, the local rate has increased whilst the national rate has reduced.

For women in Walsall the inequalities gap has widened substantially and was over 40% higher than the national rate in 2003-05.

It should be noted that 'small numbers' in Walsall contribute to large percentage fluctuations.

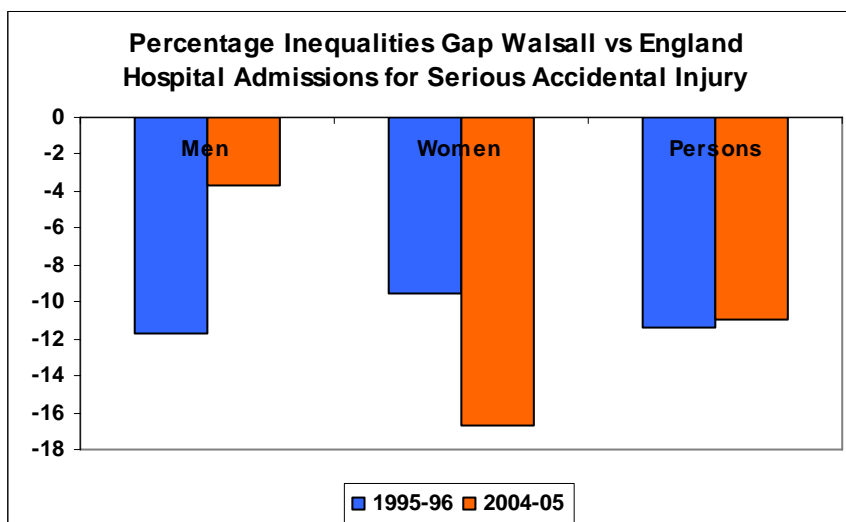
Accidents Mortality Rate (all ages) – Inequalities Gap



The Walsall inequalities gap has reduced for both men and women since 1995-97.

The major gap reduction has been for women in Walsall, which reflects a 28% reduction since 1995-97 in female accident mortality in Walsall versus a 6% increase in the national accident mortality rate among women.

Serious Accidental Injury Hospital Admissions Rate - Inequalities Gap



From almost 12% lower than the national rate in 1995-96, the Walsall accidents hospital admission rate for men has deteriorated to 4% below the national rate in 2004-05.

For women in Walsall the admissions rate has shown a marginal decrease whilst the national rate increased by 8%.

Overall, the Walsall admissions rate was 11% lower than the national average in 2004-05.

APPENDIX 3

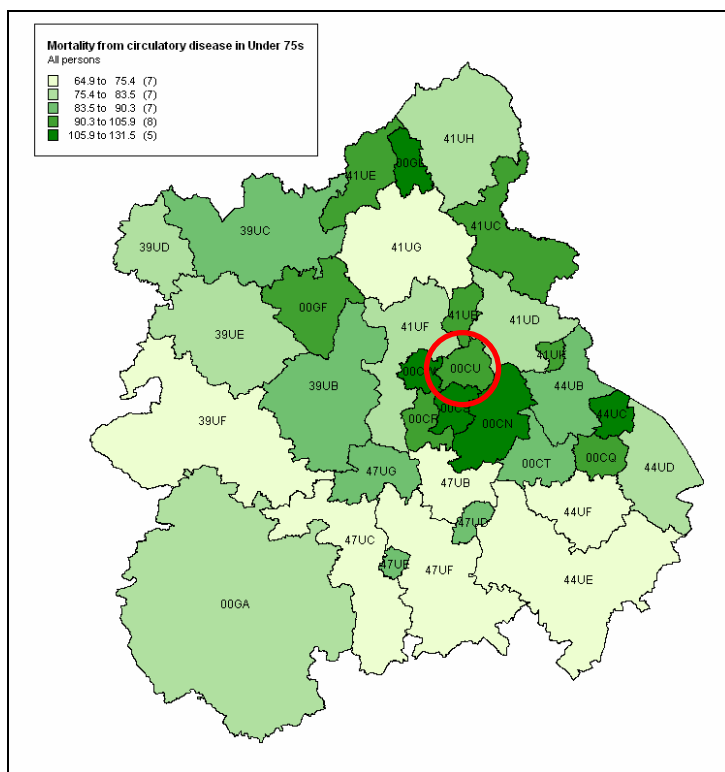
OUR HEALTHIER NATION INDICATORS ACROSS THE WEST MIDLANDS IN 2003 - 2005

The maps in this Appendix illustrate the variation across the West Midlands in the levels of the various Our Healthier Nation indicators in this Report during 2003-05. The denser the colour, the “worse” the indicator (eg higher mortality rate). The area codes for these maps are summarised below. Walsall is 00CU

District	Area Code	District	Area Code
North Shropshire District	39UC	Nuneaton and Bedworth District	44UC
Bridgnorth District	39UB	Malvern Hills District	47UC
Oswestry District	39UD	Wyre Forest District	47UG
South Shropshire District	39UF	Wychavon District	47UF
Shrewsbury and Atcham District	39UE	Bromsgrove District	47UB
Staffordshire Moorlands District	41UH	Worcester District	47UE
South Staffordshire District	41UF	Redditch District	47UD
Lichfield District	41UD	Birmingham District	00CN
Newcastle-under-Lyme District	41UE	City of Wolverhampton District	00CW
Stafford District	41UG	Coventry District	00CQ
East Staffordshire District	41UC	Dudley District	00CR
Cannock Chase District	41UB	Sandwell District	00CS
Tamworth District	41UK	Solihull District	00CT
North Warwickshire District	44UB	Walsall District	00CU
Rugby District	44UD	City of Stoke-on-Trent	00GL
Warwick District	44UF	Telford and Wrekin	00GF
Stratford-on-Avon District	44UE	County of Herefordshire	00GA

Each section of the Appendix should be read in conjunction with the respective section in the main body of the report.

All Circulatory Disease in Persons Under 75 Years: Age Standardised Mortality per 100,000 Population in the West Midlands in 2003-5



Walsall (00CU):

104.9

The Walsall rate is 55% above the lowest rate in the West Midlands but 20% below the highest rate.

Lowest in Region:

Bromsgrove (47UB)

67.6

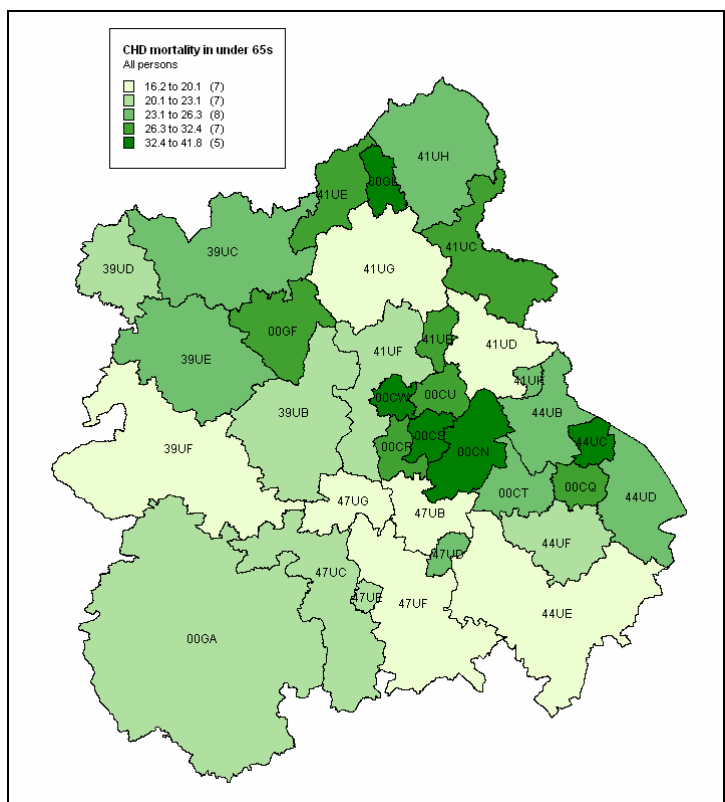
Highest in Region:

Sandwell (00CS)

131.4

© Crown copyright 2006. All rights reserved. OS license number 100044912

Coronary Heart Disease in Persons Under 65 Years: Age Standardised Mortality per 100,000 Population in the West Midlands in 2003-5



Walsall (00CU):

32.1

The Walsall rate is almost double the lowest rate in the West Midlands but 23% below the highest rate.

Lowest in Region:

Stratford on Avon (44UE):

16.3

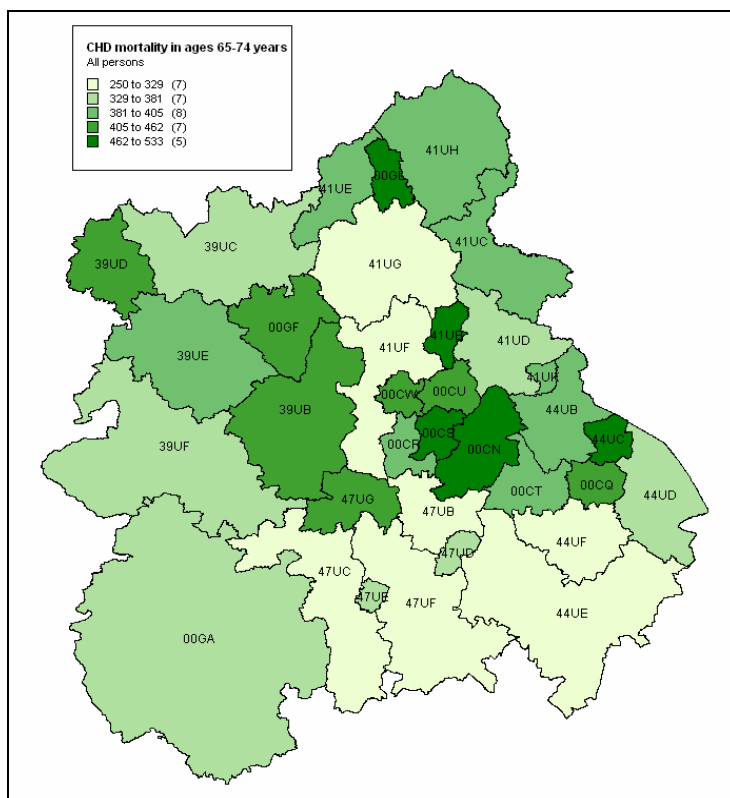
Highest in Region:

Stoke-on-Trent ((00GL):

41.7

© Crown copyright 2006. All rights reserved. OS license number 100044912

Coronary Heart Disease in Persons Aged 65-74 Years: Age Standardised Mortality per 100,000 Population in the West Midlands in 2003-5



© Crown copyright 2006. All rights reserved. OS license number 100044912

Walsall (00CU):

445.4

The Walsall rate is almost 80% above the lowest rate in the West Midlands and about 16% than the highest rate.

Lowest in Region:

Bromsgrove (47UB):

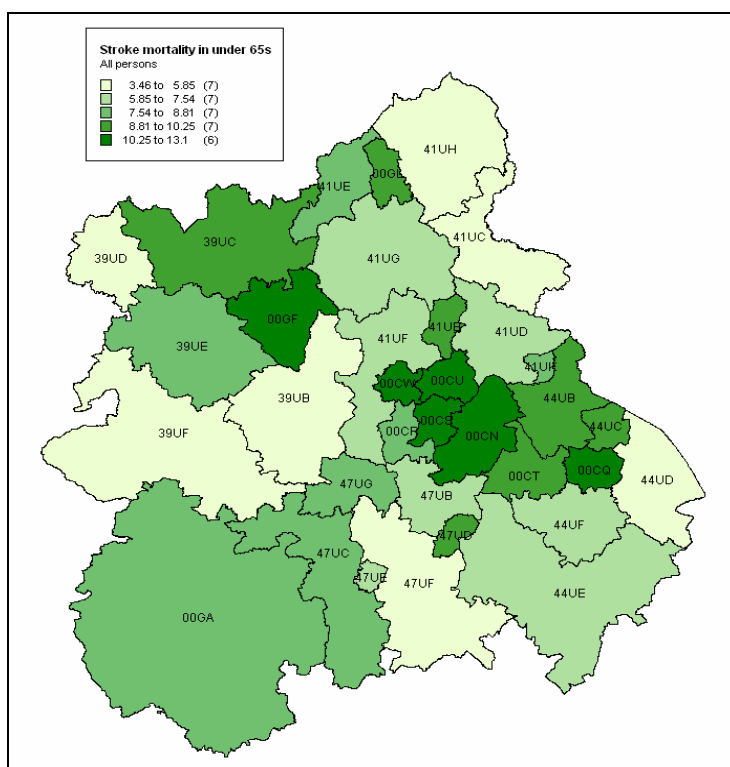
250.2

Highest in Region:

Stoke-on-Trent ((00GL):

532.1

Stroke in Persons Aged Under 65 Years: Age Standardised Mortality per 100,000 Population in the West Midlands in 2003-5



© Crown copyright 2006. All rights reserved. OS license number 100044912

Walsall (00CU):

10.25

The Walsall rate is almost 3x higher than the lowest rate in the West Midlands but more than 20% below highest rate

Lowest in Region:

Bridgnorth (39UB):

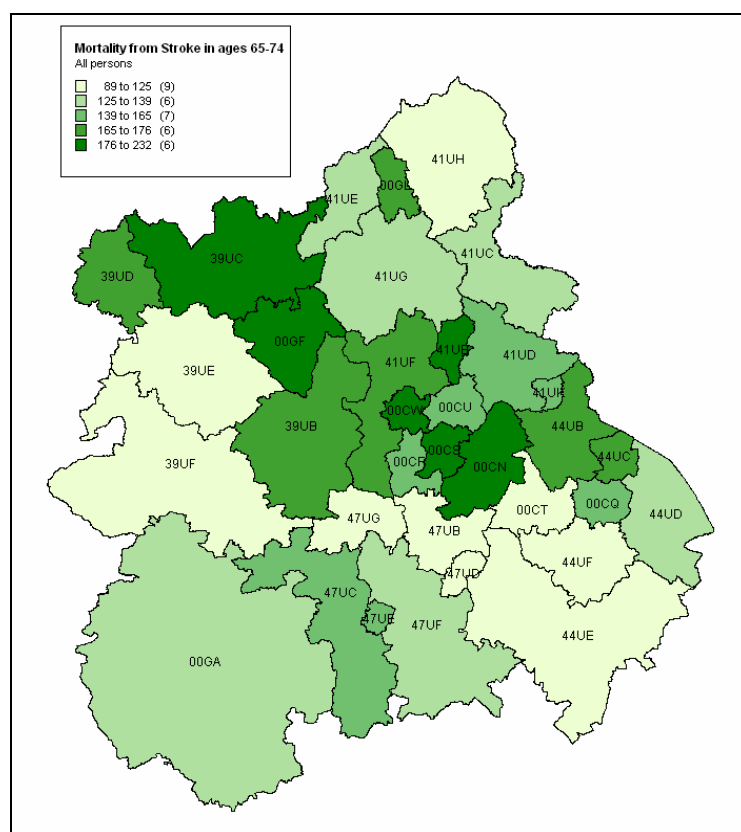
3.46

Highest in Region:

Sandwell (00CS)

13.10

Stroke in Persons Aged 65-74 Years: Age Standardised Mortality per 100,000 Population in the West Midlands in 2003-5



Walsall (00CU):

144.5

The Walsall rate is 60% above the lowest rate in the West Midlands but 38% below highest rate.

Lowest in Region:

Wyre Forest (47UG):

89.6

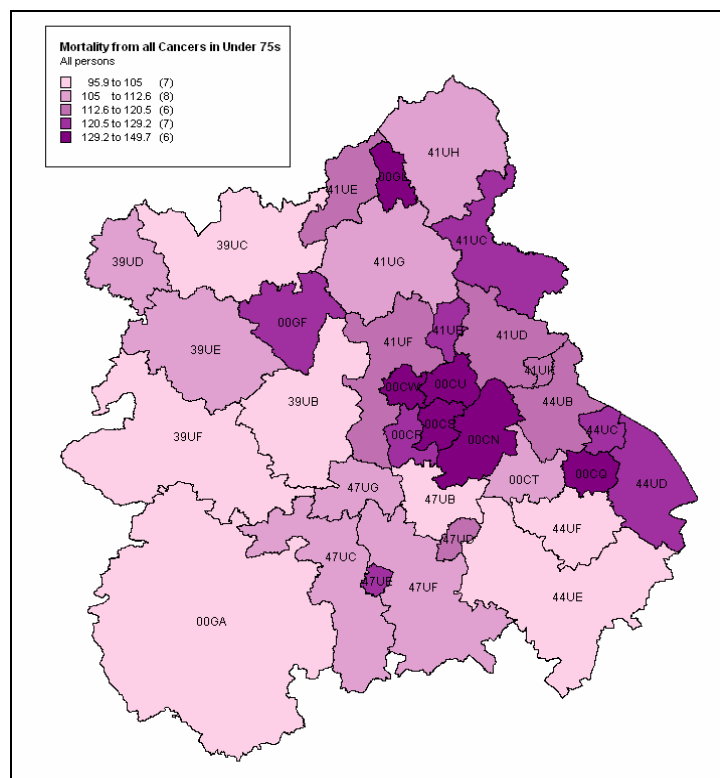
Highest in Region:

Sandwell (00CS):

231.6

© Crown copyright 2006. All rights reserved. OS license number 100044912

Cancer (all types) in Persons Aged Under 75 Years: Age Standardised Mortality per 100,000 Population in the West Midlands in 2003-5



Walsall (00CU):

130.8

The Walsall rate is 36% above the lowest rate in the West Midlands and only 5% below highest rate.

Lowest in Region:

Warwick (44UF):

95.9

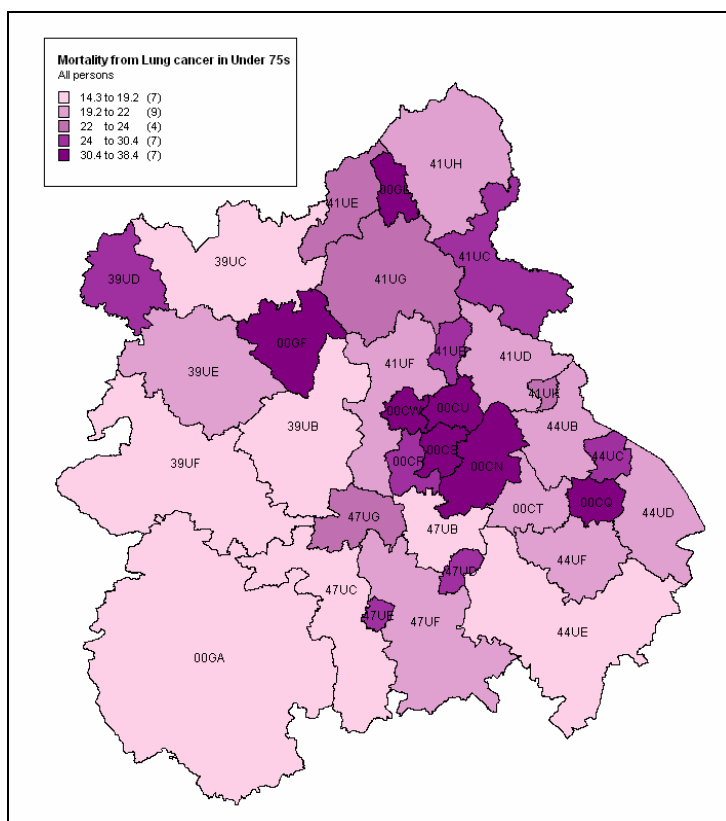
Highest in Region:

Sandwell (00CS):

137.4

© Crown copyright 2006. All rights reserved. OS license number 100044912

Lung Cancer in Persons Aged Under 75 Years: Age Standardised Mortality per 100,000 Population in the West Midlands in 2003-5



© Crown copyright 2006. All rights reserved. OS license number 100044912

Walsall (00CU):

30.4

The Walsall rate is more than double the lowest rate in the West Midlands but 20% below the highest rate.

Lowest in Region:

Bromsgrove (47UB):

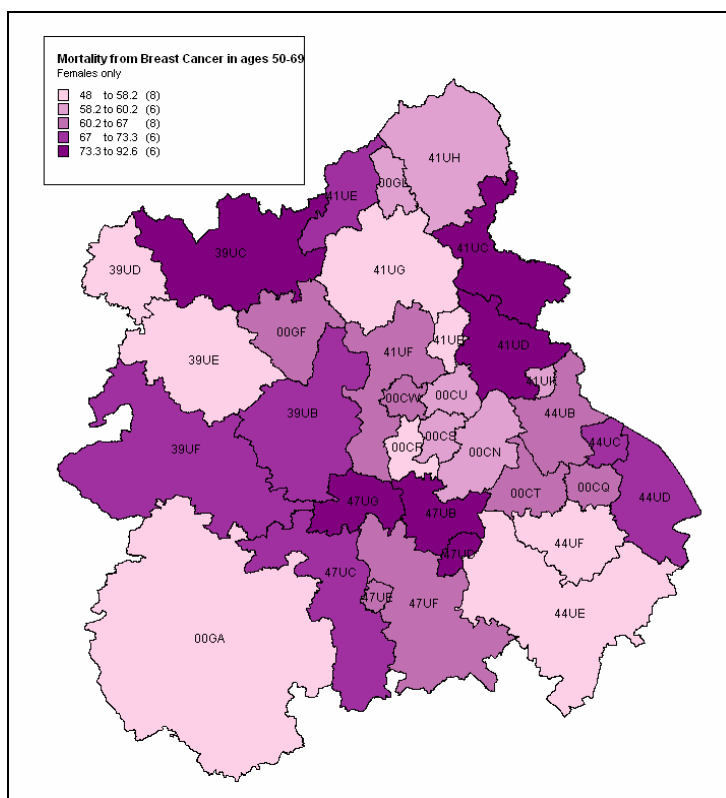
14.3

Highest in Region:

Stoke-on-Trent (00GL):

38.3

Breast Cancer in Females Aged 50-69 Years: Age Standardised Mortality per 100,000 Population in the West Midlands in 2003-5



© Crown copyright 2006. All rights reserved. OS license number 100044912

Walsall (00CU):

58.6

The Walsall rate is 22% higher than the lowest rate in the West Midlands but 37% below the highest rate.

Lowest in Region:

Warwick (44UF):

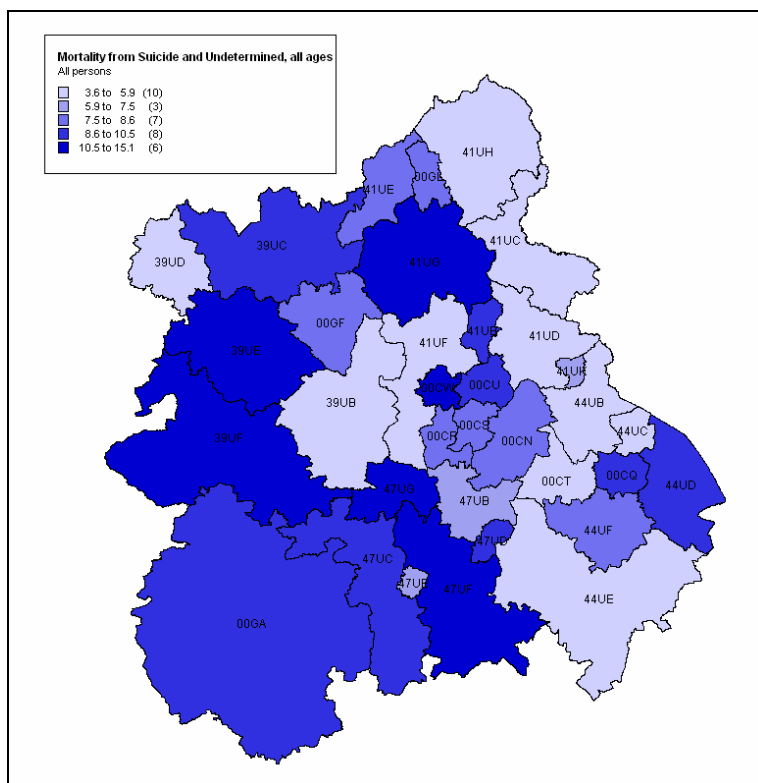
48.0

Highest in Region:

North Shropshire (39UC):

92.5

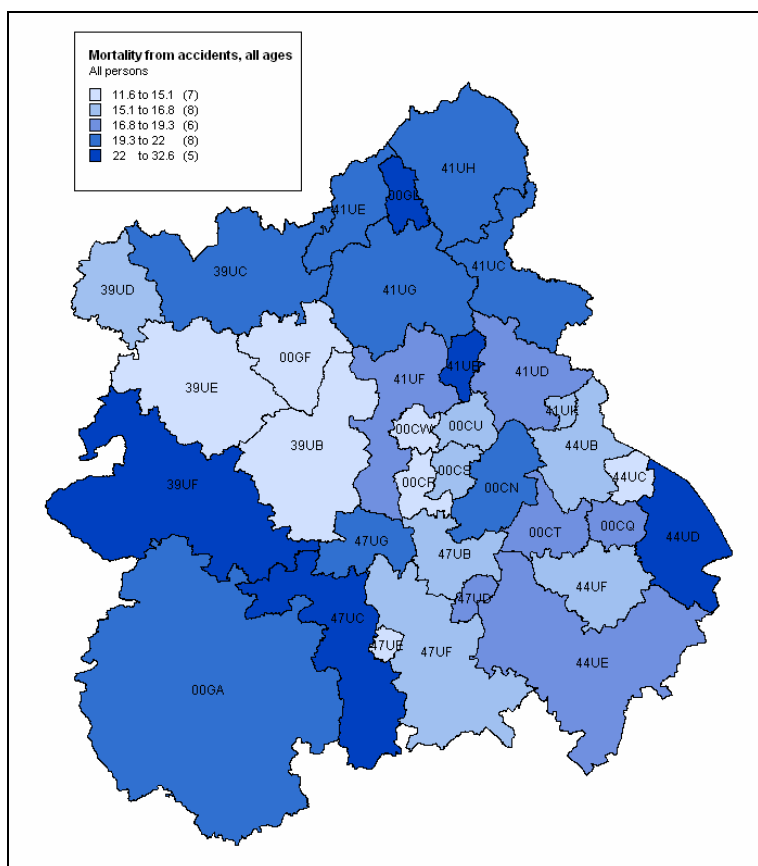
Suicide and Undetermined Injury, All Ages: Age Standardised Mortality per 100,000 Population in the West Midlands in 2003-5



© Crown copyright 2006. All rights reserved. OS license number 100044912

<p>Walsall (00CU):</p> <p style="text-align: center;">8.87</p> <p>The Walsall rate is almost 2.5x the lowest rate in the West Midlands but 40% below highest rate.</p>
<p>Lowest in Region:</p> <p>South Staffordshire (41UF):</p> <p style="text-align: center;">3.60</p>
<p>Highest in Region:</p> <p>South Shropshire (39UF):</p> <p style="text-align: center;">15.02</p>

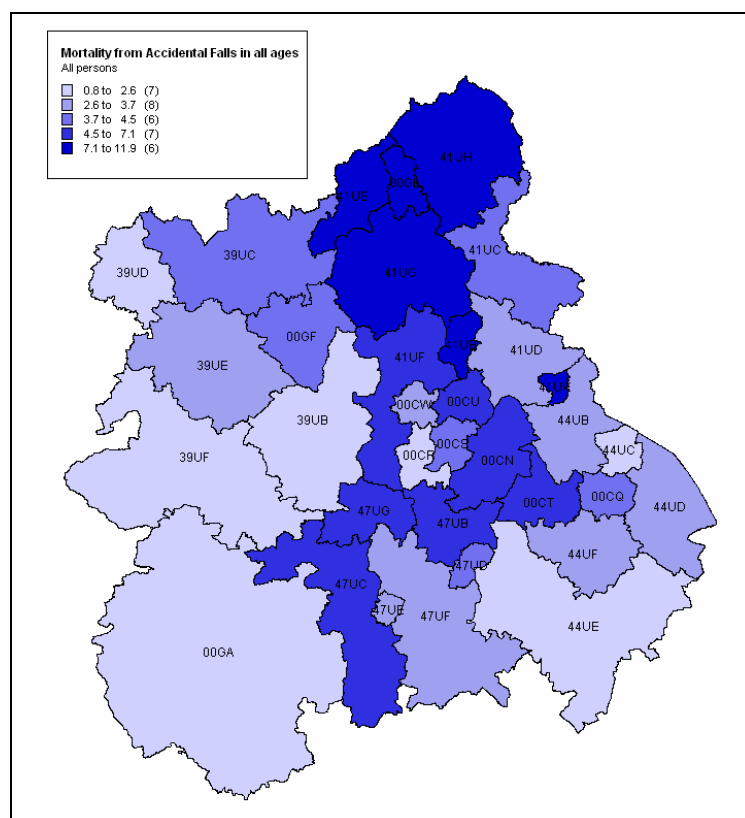
Deaths from Accidents, All Ages: Age Standardised Mortality per 100,000 Population in the West Midlands in 2003-5



© Crown copyright 2006. All rights reserved. OS license number 100044912

<p>Walsall (00CU):</p> <p style="text-align: center;">16.58</p> <p>The Walsall rate is 40% above the lowest rate in the West Midlands but almost 50% below highest rate.</p>
<p>Lowest in Region:</p> <p>Bridgnorth (39UB):</p> <p style="text-align: center;">11.66</p>
<p>Highest in Region:</p> <p>South Shropshire (39UF):</p> <p style="text-align: center;">32.51</p>

Accidental Falls, All Ages: Age Standardised Mortality per 100,000 Population in the West Midlands in 2003-5



Walsall (00CU):

5.87

The Walsall rate is 5x higher than the lowest rate in the West Midlands but 50% below the highest rate.

Lowest in Region:

Oswestry (39UD):

1.13

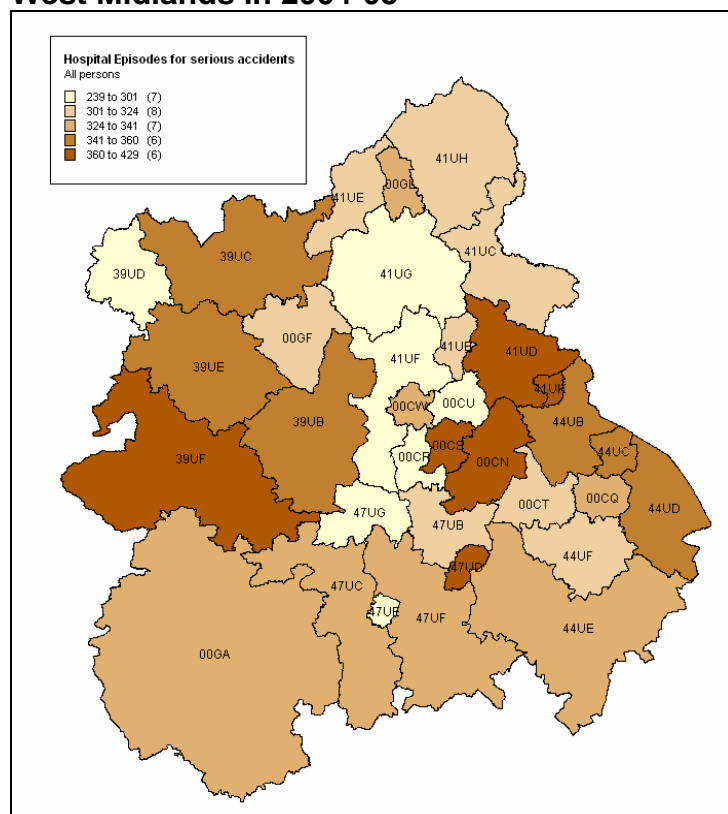
Highest in Region:

Stoke-on-Trent (00GL):

11.88

© Crown copyright 2006. All rights reserved. OS license number 100044912

Serious Accidental Injury Resulting in Hospital Admission: Age Standardised Rate per 100,000 Population for Hospital Episodes in the West Midlands in 2004-05



Walsall (00CU):

296.0

The Walsall rate is 24% higher than the lowest rate in the West Midlands but 26% below the highest rate.

Lowest in Region:

Wyre Forest (47UG):

239.3

Highest in Region:

South Shropshire (39UF):

402.1

© Crown copyright 2006. All rights reserved. OS license number 100044912

